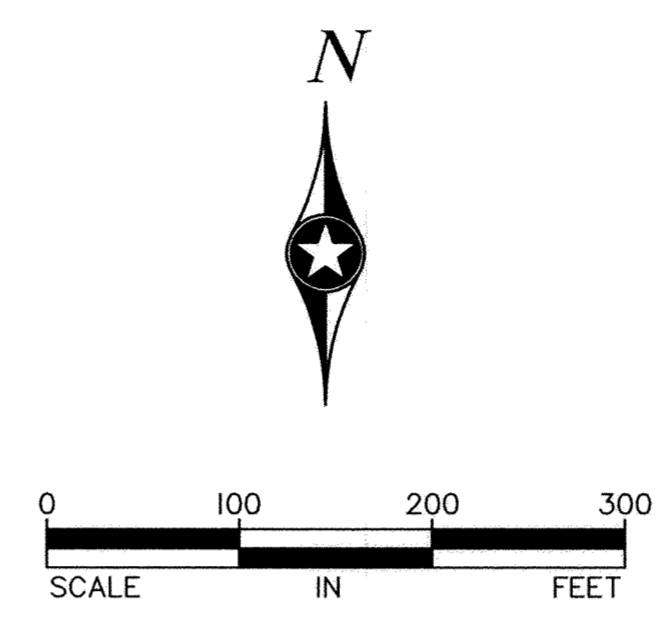
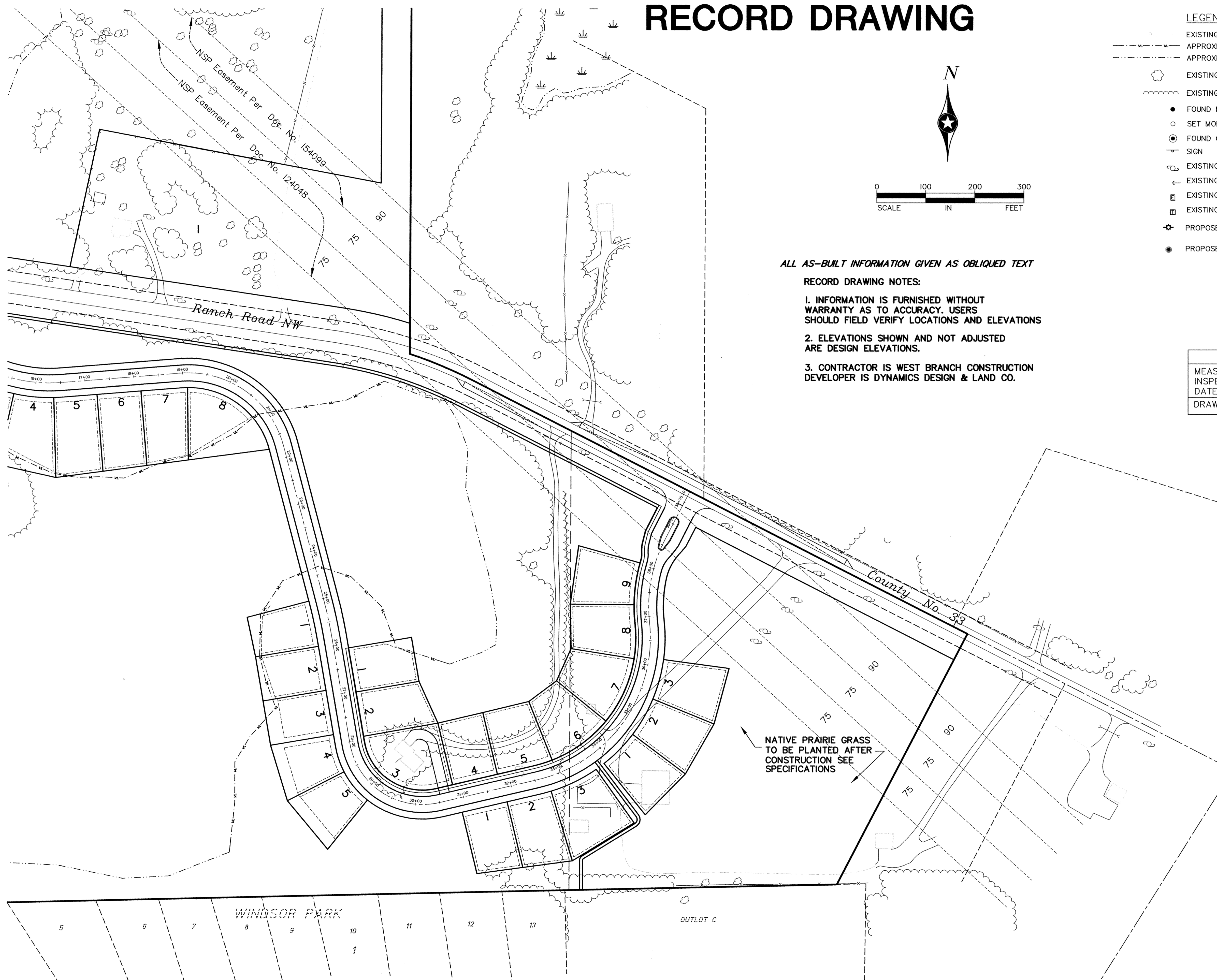


# RECORD DRAWING



- LEGEND**
- EXISTING CONTOURS
  - - - - - APPROXIMATE WET LANDS AS LOCATED BY BPA
  - - - - - APPROXIMATE WET LANDS AS LOCATED BY DYNAMICS DESIGN
  - ☉ EXISTING TREE
  - ~~~~~ EXISTING TREE LINE
  - FOUND MONUMENT
  - SET MONUMENT
  - ⊙ FOUND CAST IRON MONUMENT
  - ⊙ SIGN
  - ⊙ EXISTING POLE
  - ⊙ EXISTING GUY ANCHOR
  - ⊙ EXISTING ELECTRIC BOX
  - ⊙ EXISTING TELEPHONE PEDESTAL
  - ⊙ PROPOSED STREET LIGHT
  - PROPOSED 2" CALIPER MATURE SPRUCE

ALL AS-BUILT INFORMATION GIVEN AS OBLIQUED TEXT

**RECORD DRAWING NOTES:**

1. INFORMATION IS FURNISHED WITHOUT WARRANTY AS TO ACCURACY. USERS SHOULD FIELD VERIFY LOCATIONS AND ELEVATIONS
2. ELEVATIONS SHOWN AND NOT ADJUSTED ARE DESIGN ELEVATIONS.
3. CONTRACTOR IS WEST BRANCH CONSTRUCTION DEVELOPER IS DYNAMICS DESIGN & LAND CO.

RECORD DRAWING  
 MEASURED BY: LH @ BPA  
 INSPECTED BY R.N. @ H.R. GREEN  
 DATE 6/02  
 DRAWN BY CCO, GB, PG @ BPA

I hereby certify that this plan was prepared by me or under my direct supervision and that I am a duly Licensed Professional Engineer under the laws of the State of Minnesota.  Signed: <i>[Signature]</i> Date: 3/1/05 Reg. No. 19900	DATE: 3/27/02 DESIGN BY: JKB, PG, GB DRAWN BY: PG, GB, CCO CHECKED BY: CCO, JKB DWG FILE: 12_LAND FILE NO.: 101304.0	DESCRIPTION CHANGES PER CITY ENGINEER LOWERED GRADE 21" HDPE CHANGED TO 24" HDPE ASBUILTS UPDATED ASBUILTS
	REV. NO. 1 DATE: 6/24/02	
	REV. NO. 2 DATE: 8/7/02	
	REV. NO. 3 DATE: 8/6/02	
	REV. NO. 4 DATE: 2/13/03	
REV. NO. 5 DATE: 1/31/05		
WINDSOR PARK 3RD ADD. CITY OF ELK RIVER, MN. DYNAMICS DESIGN & LAND CO.	SHEET NO. 12	LANDSCAPING & LIGHTING PLAN
BOGART, PEDERSON & ASSOCIATES, INC. LAND SURVEYING CIVIL ENGINEERING MAPPING 13076 FIRST STREET, BECKER, MN 55308-9322 TEL: 763-262-8822 FAX: 763-262-8844		17