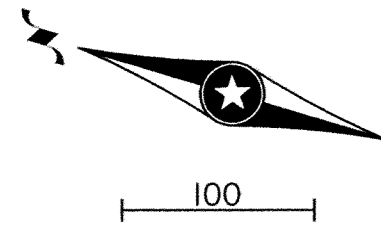


JOPLIN ST RECORD DRAWING

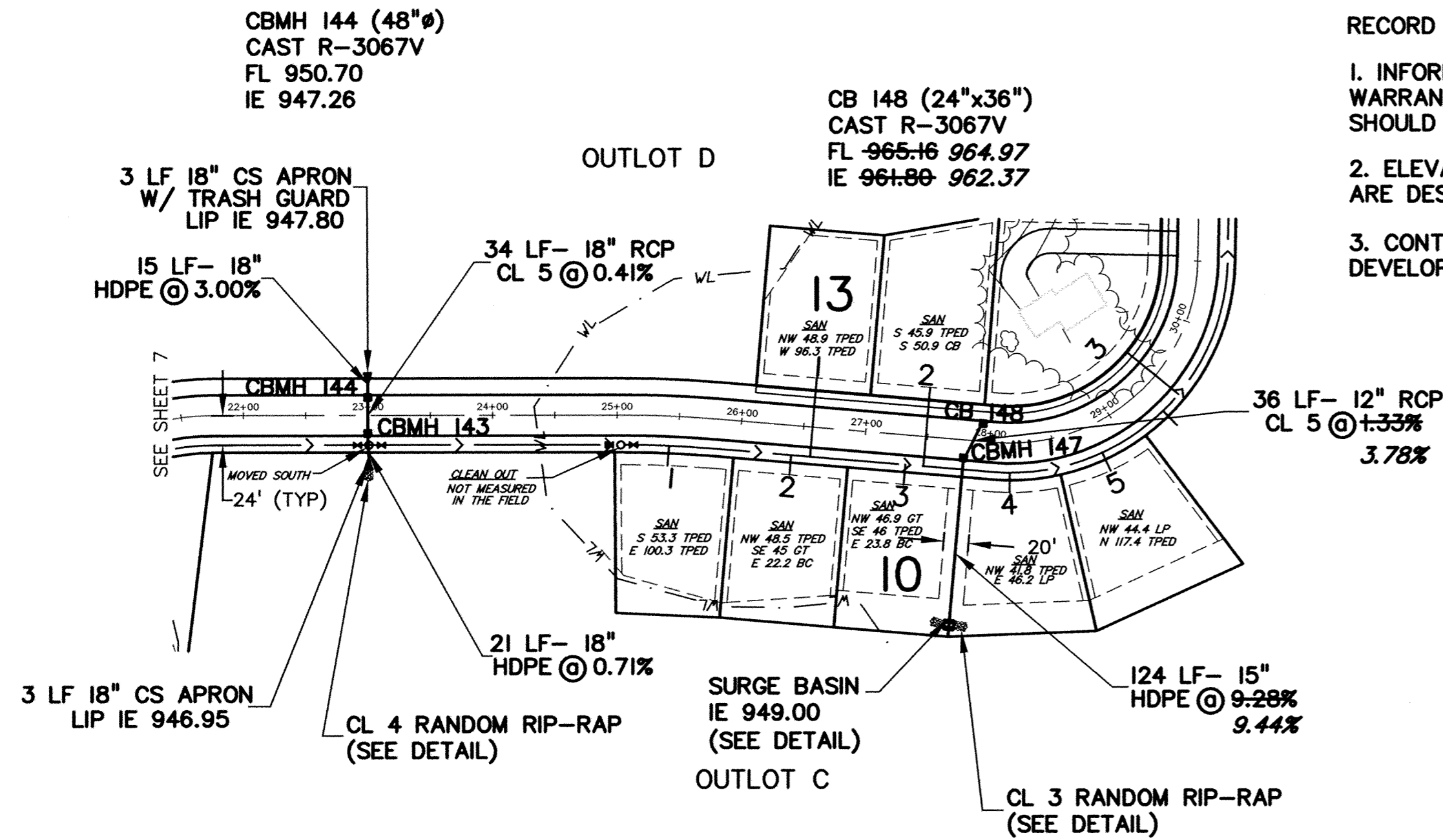


ALL AS-BUILT INFORMATION GIVEN AS OBLIQUED TEXT

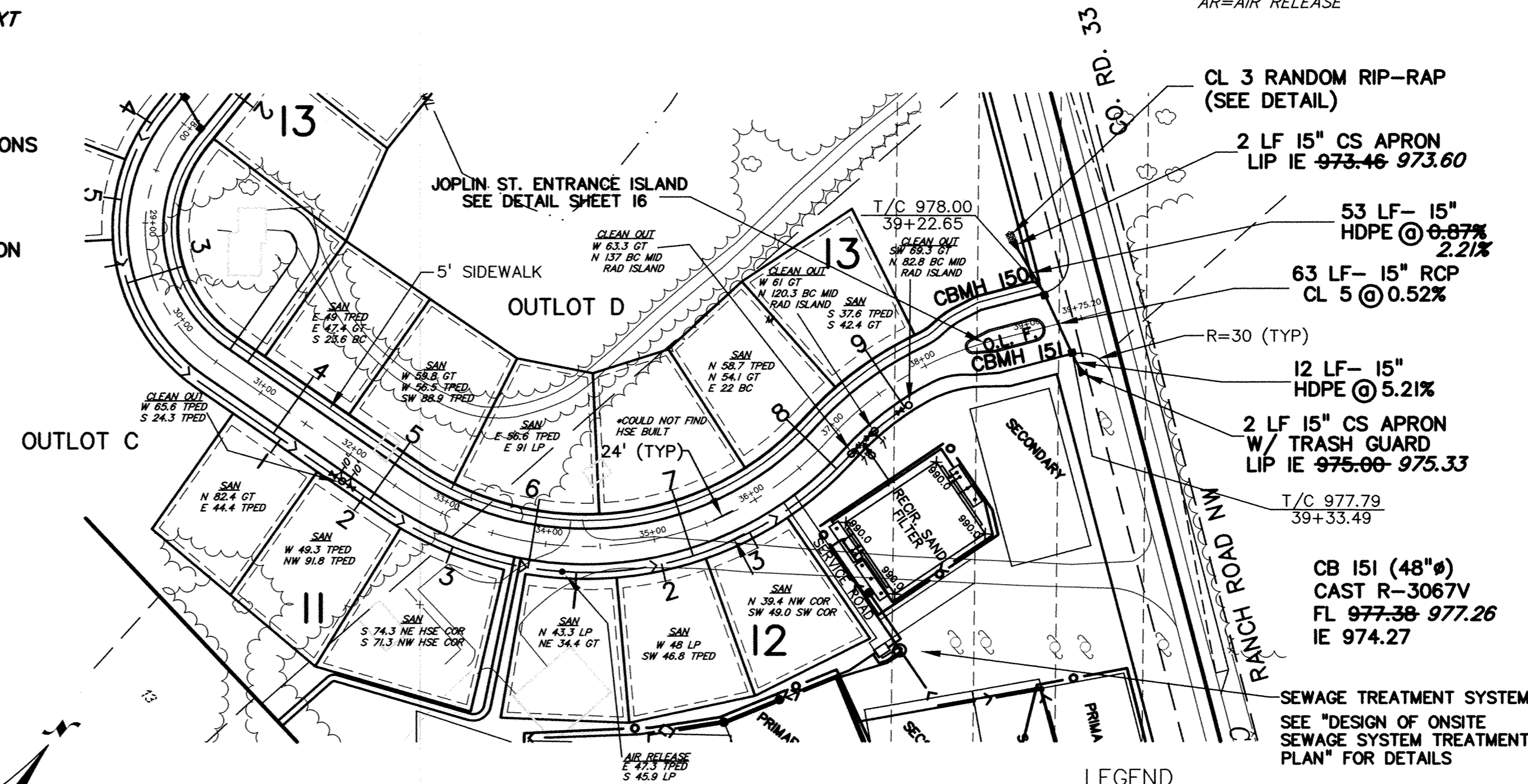
RECORD DRAWING NOTES:

1. INFORMATION IS FURNISHED WITHOUT WARRANTY AS TO ACCURACY. USERS SHOULD FIELD VERIFY LOCATIONS AND ELEVATIONS.
2. ELEVATIONS SHOWN AND NOT ADJUSTED ARE DESIGN ELEVATIONS.
3. CONTRACTOR IS WEST BRANCH CONSTRUCTION DEVELOPER IS DYNAMICS DESIGN & LAND CO.

SERVICE TIES
 ALL TIES ARE FROM OBJECT
 GT=ELEC. GROUND TRANSFORMER
 TPED=TELE. PEDISTAL
 CO=CLEAN OUT
 AR=AIR RELEASE



RECORD DRAWING
 MEASURED BY: LH @ BPA
 INSPECTED BY: R.N. @ H.R. GREEN
 DATE 6/02
 DRAWN BY: CCO, GB, PG @ BPA

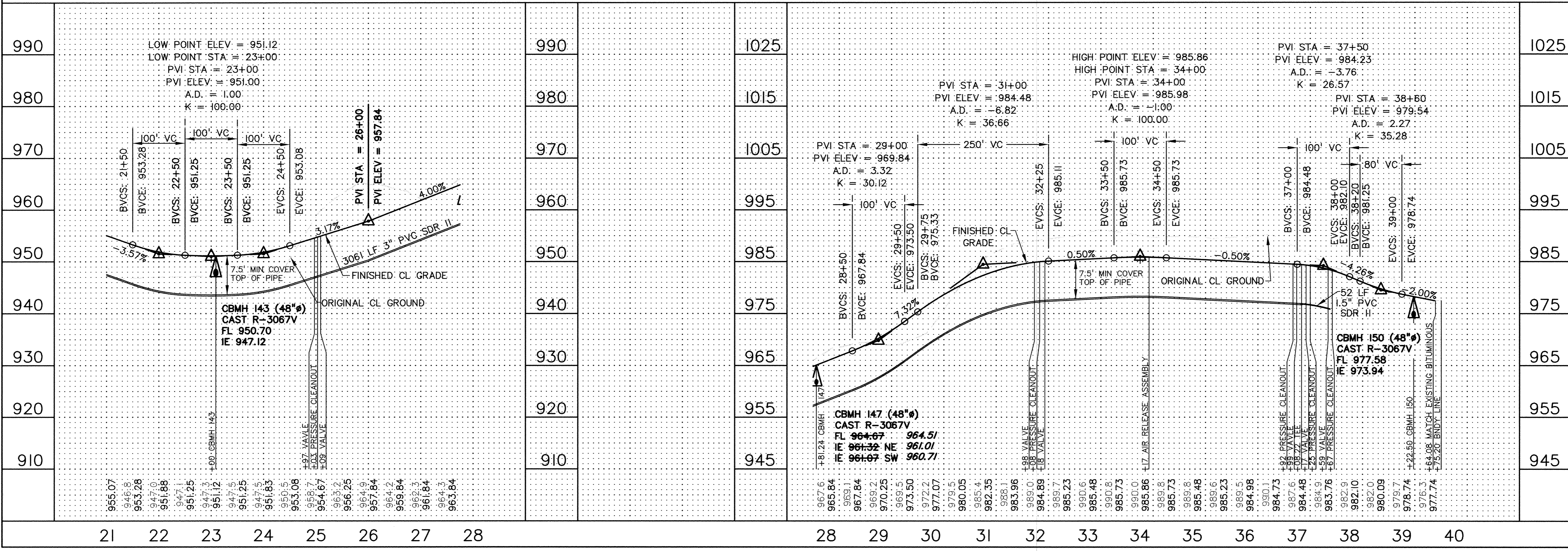


- NOTES:**
- 1) STATIONING REFERS TO STREET CENTERLINE.
 - 2) DIMENSIONS TO BACK OF CURB UNLESS OTHERWISE NOTED (SEE DETAIL)
 - 3) TOP OF CURB ELEVATIONS ARE TO TOP OF BERM OR MOUNTABLE CURB SURFACE
 - 4) ALL SEWER SERVICE LINES SHALL BE 1-1/4" SDR II POLYETHYLENE
 - 5) ALL CROSSINGS OF PAVED AREAS SHALL BE SLEEVED
 - 6) SEE DETAILS FOR FORCEMAIN VALVES, CLEANOUTS, AND AIR RELEASE ASSEMBLIES

- LEGEND**
- PROPOSED CLEANOUT / PIGGING PORT
 - ✦ PROPOSED VALVE
 - PROPOSED AIR RELEASE ASSEMBLY
 - ⊕ PROPOSED TEE

REV. NO.	DATE	DESCRIPTION
1	6/27/02	CHANGES PER CITY ENGINEER
2	8/2/02	ADJUSTED GRADE
3	9/2/02	ADJUSTED GRADE
4	2/13/03	ADJUSTED GRADE TO 24" HDPE
5	1/31/05	ASBUILTS
	1/31/05	UPDATED ASBUILTS

I hereby certify that this plan was prepared by me or under my direct supervision and that I am a duly Licensed Professional Engineer in the State of Minnesota.
 Checked By: CCO, GB, PG
 DWG FILE: B.A.S.-JOPLIN
 FILE NO.: 101304.0
 Reg. No. 19900
 Date: 3/4/05



WINDSOR PARK 3RD ADD.
 CITY OF ELK RIVER, MN.
 DYNAMICS DESIGN & LAND CO.
 SANITARY SEWER, STORM SEWER & STREET PLAN
 JOPLIN ST

BOGART, PEDERSON & ASSOCIATES, INC.
 LAND SURVEYING
 CIVIL ENGINEERING
 13016 13TH STREET, RECORDER MINNESOTA
 TEL: 763-282-8822 FAX: 763-282-8844

SHEET NO. 17