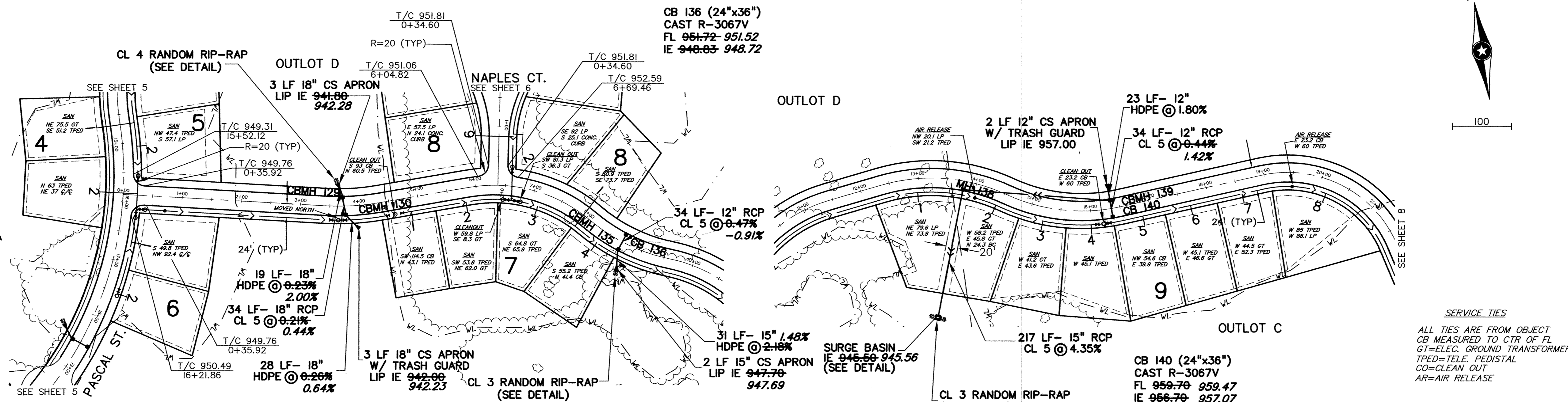
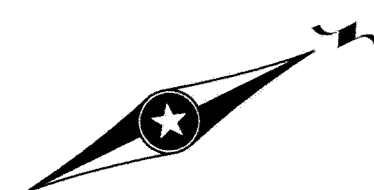


NAPLES ST RECORD DRAWING 215TH AVE



ALL AS-BUILT INFORMATION GIVEN AS OBLIQUED TEXT

RECORD DRAWING NOTES:

1. INFORMATION IS FURNISHED WITHOUT WARRANTY AS TO ACCURACY. USERS SHOULD FIELD VERIFY LOCATIONS AND ELEVATIONS
2. ELEVATIONS SHOWN AND NOT ADJUSTED ARE DESIGN ELEVATIONS.
3. CONTRACTOR IS WEST BRANCH CONSTRUCTION DEVELOPER IS DYNAMICS DESIGN & LAND CO.

CB 130 (48"Ø)
CAST R-3067V
FL ~~945.14~~ 944.95
IE ~~941.92~~ 942.05

RECORD DRAWING	
MEASURED BY:	LH @ BPA
INSPECTED BY:	R.N. @ H.R. GREEN
DATE	6/02
DRAWN BY:	CCO, CB, PG @ BPA

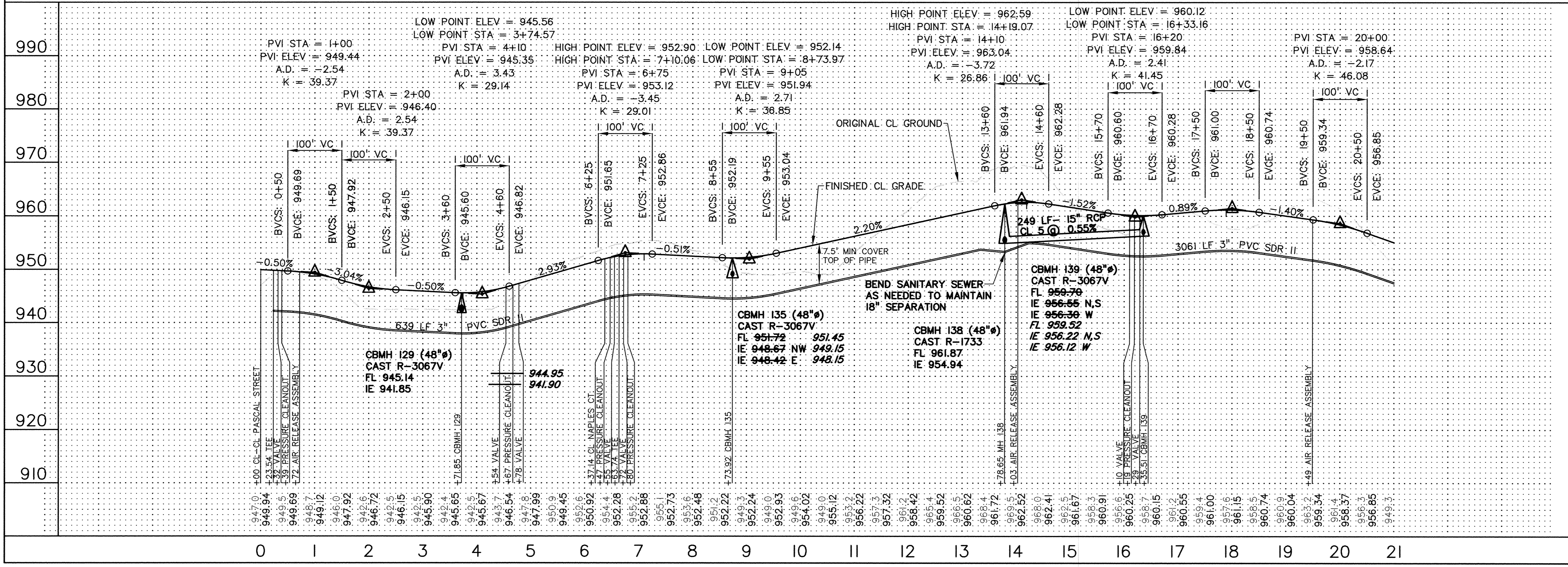
- NOTES:**
- 1) STATIONING REFERS TO STREET CENTERLINE.
 - 2) DIMENSIONS TO BACK OF CURB UNLESS OTHERWISE NOTED (SEE DETAIL)
 - 3) TOP OF CURB ELEVATIONS ARE TO TOP OF BERM OR MOUNTABLE CURB SURFACE
 - 4) ALL SEWER SERVICE LINES SHALL BE 1-1/4" SDR II POLYETHYLENE
 - 5) ALL CROSSINGS OF PAVED AREAS SHALL BE SLEEVED
 - 6) SEE DETAILS FOR FORCEMAIN VALVES, CLEANOUTS, AND AIR RELEASE ASSEMBLIES

- LEGEND**
- PROPOSED CLEANOUT / PIGGING PORT
 - ⊕ PROPOSED VALVE
 - PROPOSED AIR RELEASE ASSEMBLY
 - ⊕ PROPOSED TEE

REV. NO.	DATE	DESCRIPTION
1	6/24/02	CHANGES PER CITY ENGINEER
2	8/27/02	LOWERED GRADE
3	8/6/02	21" HDPE CHANGED TO 24" HDPE
4	7/13/03	ASBUILT'S
5	1/31/05	UPDATED ASBUILT'S

I hereby certify that this plan was prepared by me or under my direct supervision and that I am a duly Licensed Professional Engineer under the laws of the State of Minnesota.

DATE: 5/1/05 Reg. No.: 19900



990	990
980	980
970	970
960	960
950	950
940	940
930	930
920	920
910	910

WINDSOR PARK 3RD ADD.
CITY OF ELK RIVER, MN
DYNAMICS DESIGN & LAND CO.
SANITARY SEWER, STORM SEWER & STREET PLAN
NAPLES ST & 215TH AVE

SHEET NO. 17

BOGART PEDERSON & ASSOCIATES, INC.

LAND SURVEYING
CIVIL ENGINEERING
MAPPING

13076 FIRST STREET, BECKER, MN 55306-8322
TEL: 763-266-0662 FAX: 763-266-0644