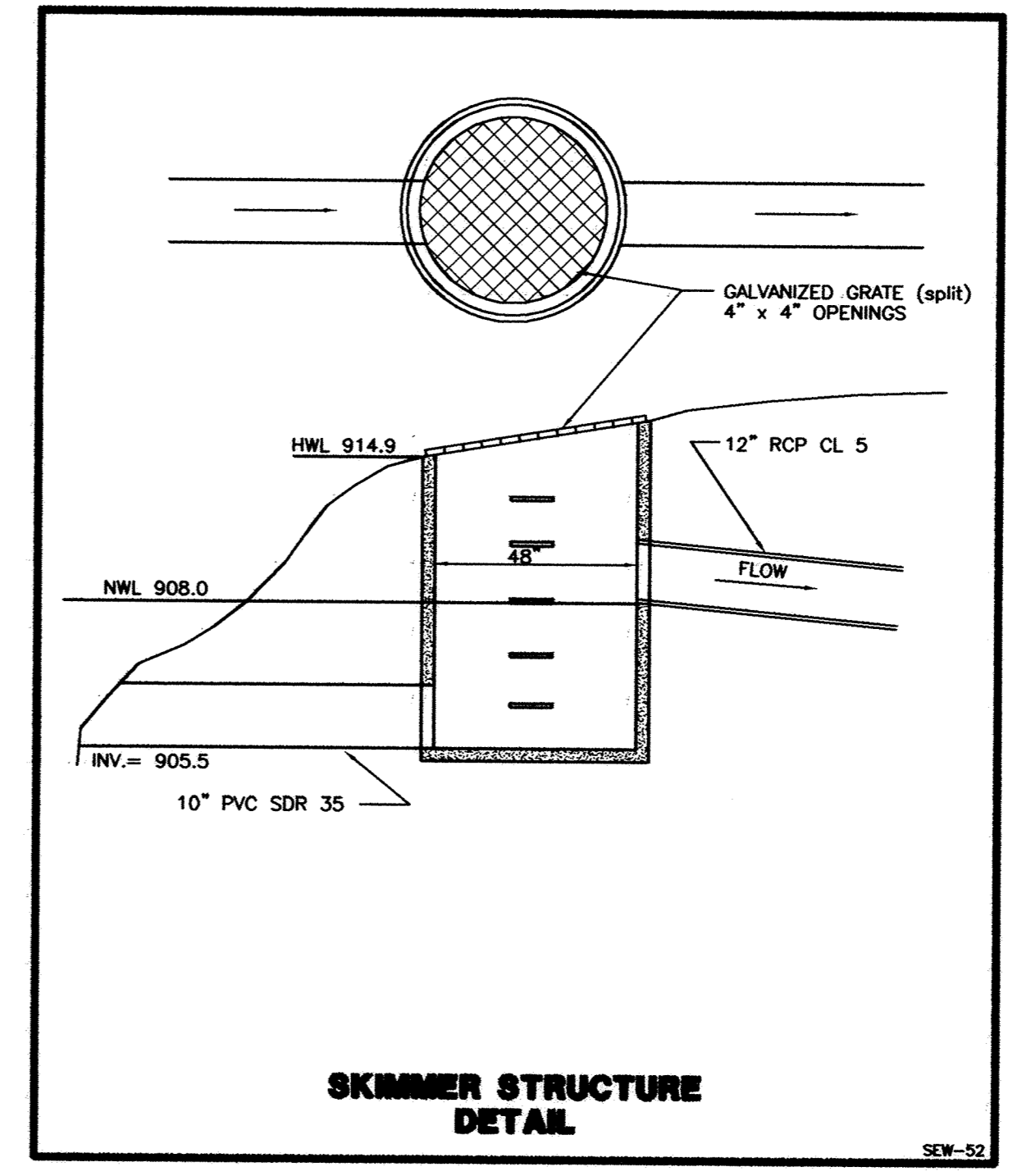
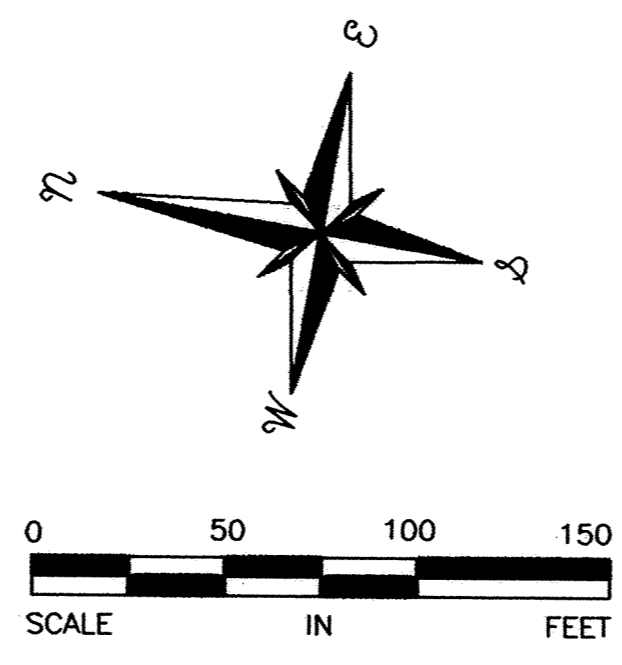
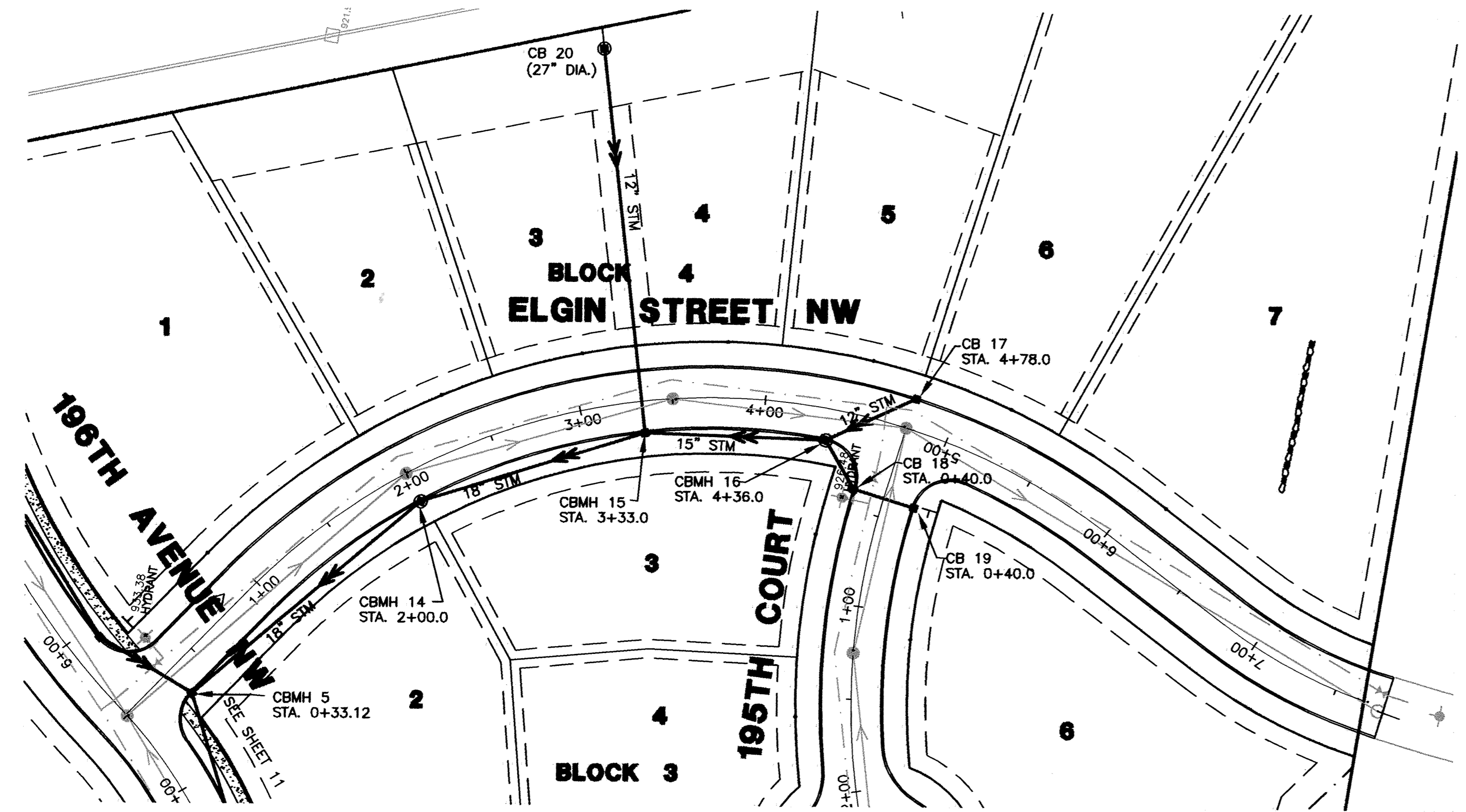


DRAWING NUMBER

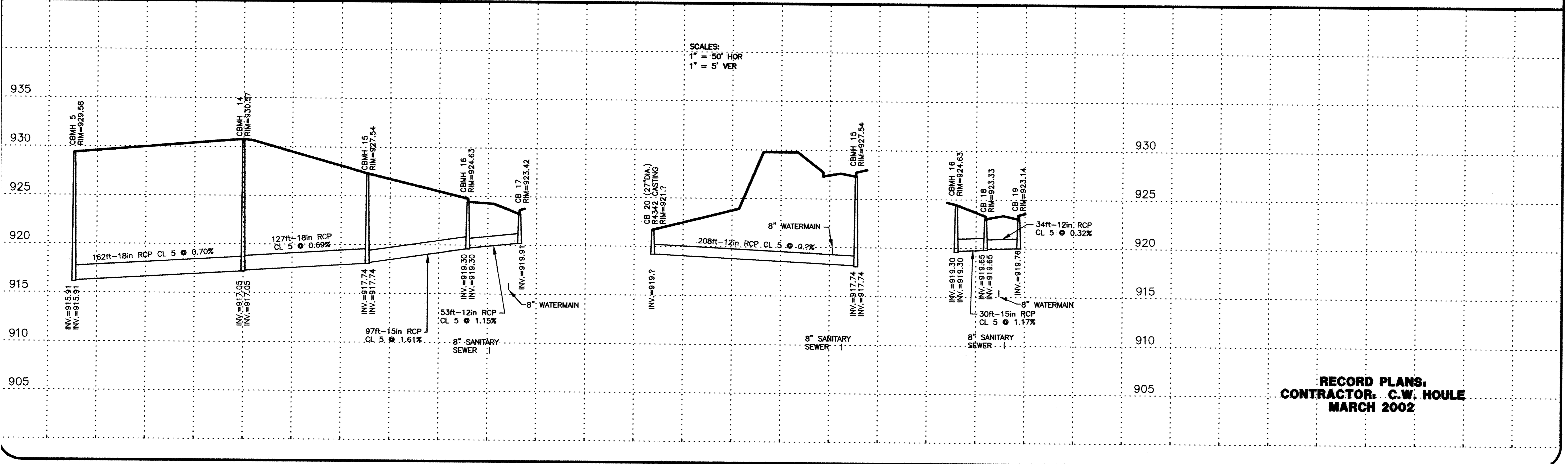
DRAWING NUMBER

DRAWING NUMBER

DRAWING NUMBER



BENCHMARK:  
TOP OF IRON AS SHOWN  
ELEVATION=922.75 FT. (NGVD-1929)



SCALES:  
1" = 50' HOR  
1" = 5' VER

**RECORD PLANS,  
CONTRACTOR: C.W. HOULE  
MARCH 2002**

DATE	BY	REVISIONS	REVISION
3-9-01	DS	CITY COMMENTS	
3-22-01	DS	CHANGE RIM CBMH 14	
3-2002	SJM	RECORD DRAWING	

I HEREBY CERTIFY THAT THIS PLAN, SPECIFICATION, OR REPORT WAS PREPARED BY ME OR UNDER MY DIRECT SUPERVISION AND THAT I AM A DULY LICENSED PROFESSIONAL ENGINEER UNDER THE LAWS OF THE STATE OF MINNESOTA.

*Kenneth Adolf*  
Kenneth Adolf  
DATE: 01-29-01 REG. NO. 12048  
REVIEWED BY: \_\_\_\_\_ DATE: \_\_\_\_\_

**SCHOELL & MADSON, INC.**  
ENGINEERS \* SURVEYORS \* PLANNING  
SOIL TESTING \* ENVIRONMENTAL SERVICES  
10580 WAYZATA BOULEVARD, SUITE 1  
MINNETONKA, MN 55305  
(952) 546-7601 FAX: (952) 546-9065  
www.schoellmadson.com

OWNER/DEVELOPER  
**WINDSOR DEVELOPMENT**  
9145 EDNBURGH LANE  
WOODBURY, MN 55125  
DATE: JAN., 2001

PROJECT NAME/SHEET TITLE  
**WINDSOR OAK HILL  
ELK RIVER, MN  
ELGIN STREET NW  
STORM SEWER PLAN**

S&M PRODUCTS • NEW HOPE, MINNESOTA  
REORDER BY PART NUMBER 8592  
S&M PRODUCTS • NEW HOPE, MINNESOTA  
REORDER BY PART NUMBER 8592  
S&M PRODUCTS • NEW HOPE, MINNESOTA  
REORDER BY PART NUMBER 8592  
S&M PRODUCTS • NEW HOPE, MINNESOTA  
REORDER BY PART NUMBER 8592