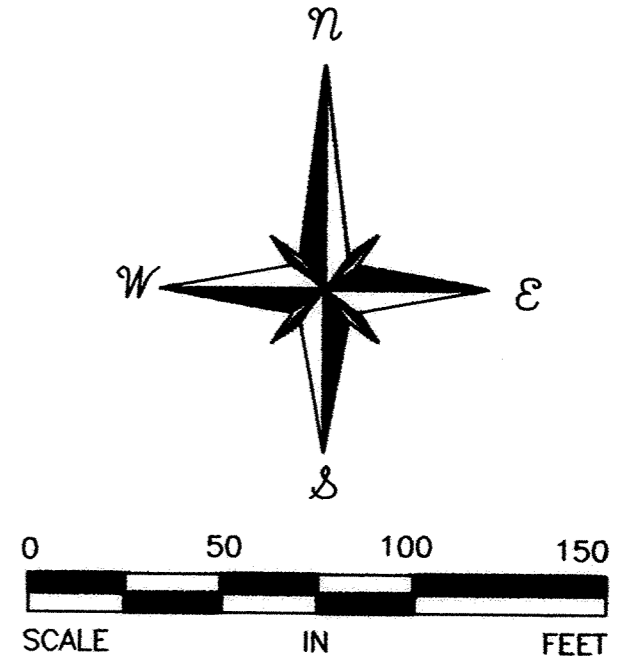
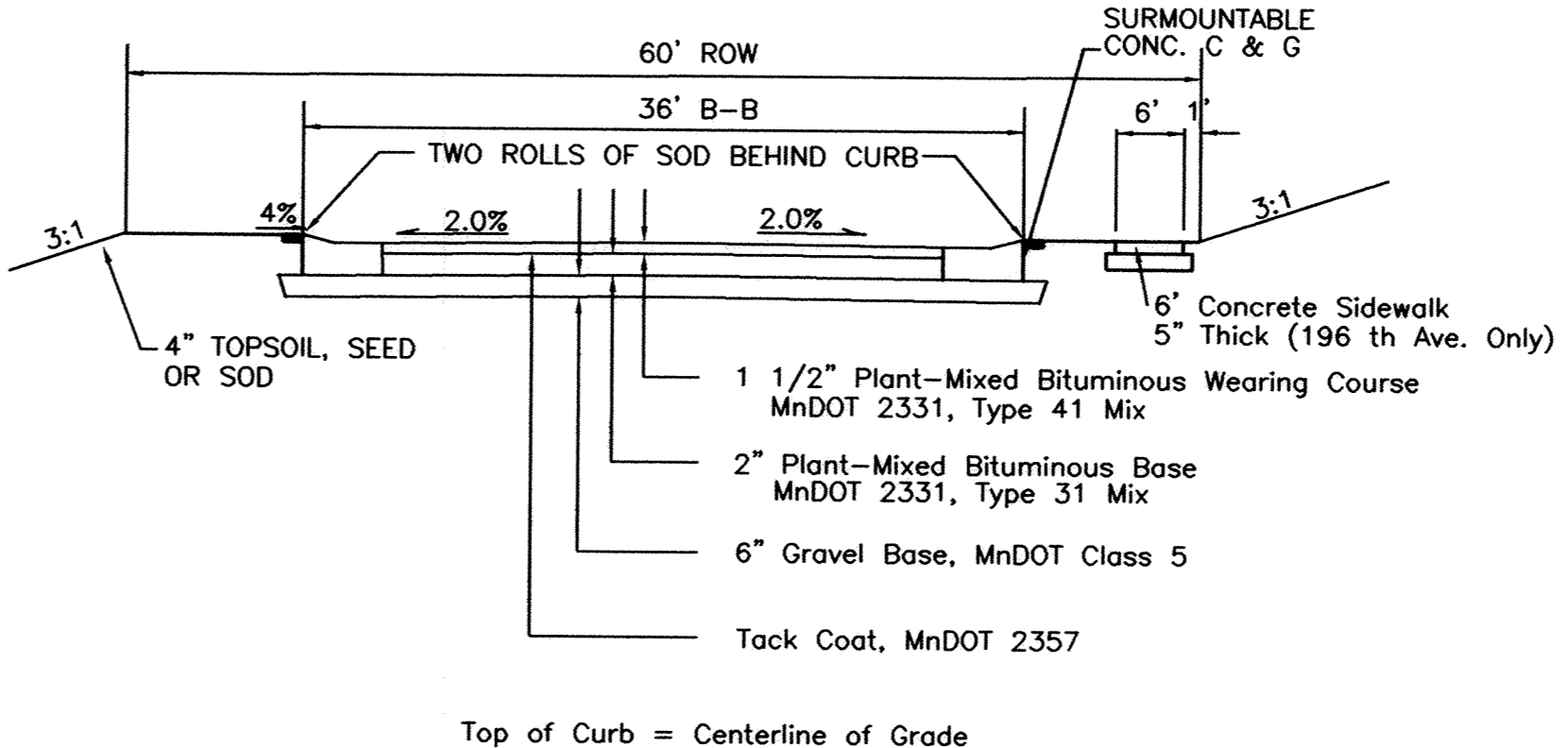
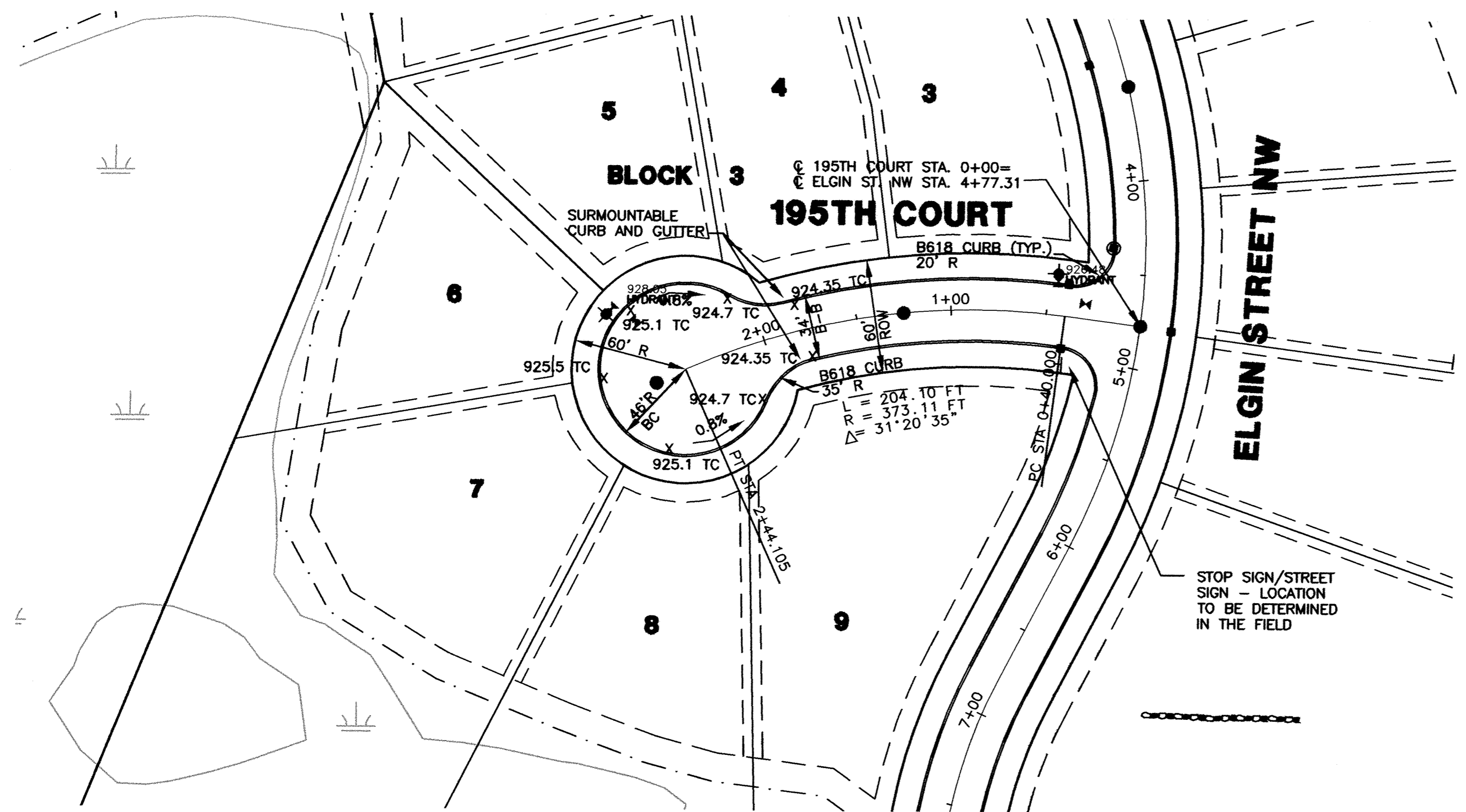


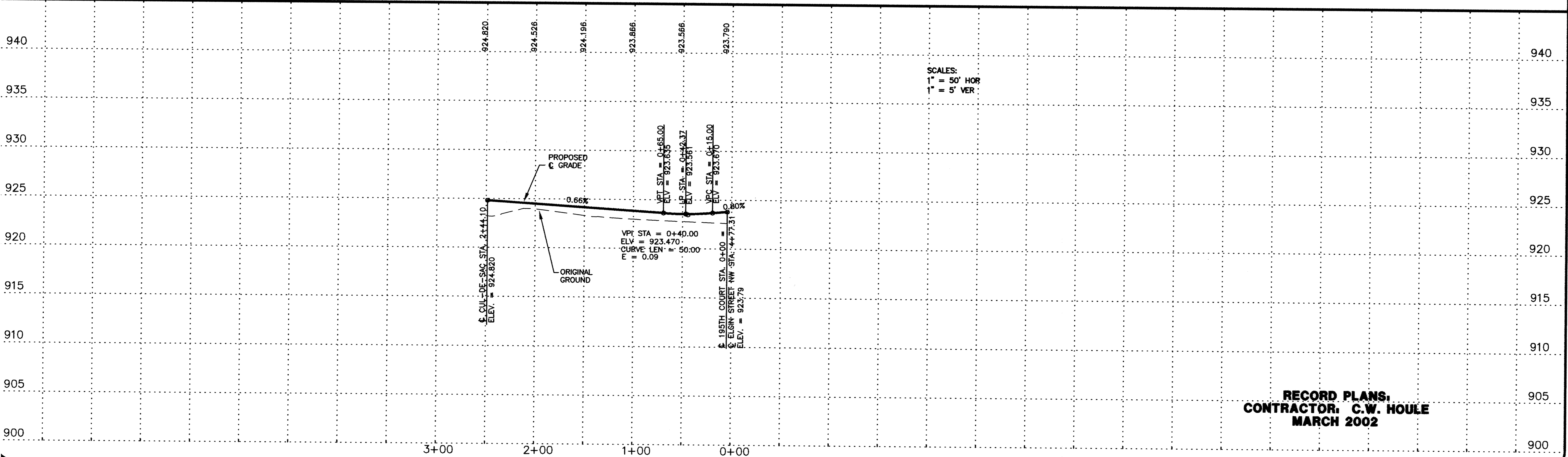
SCHOD PRODUCTS • NEW HARB, MINNESOTA
REPORT BY PART NUMBER 6582
SCHOD PRODUCTS • NEW HARB, MINNESOTA
REPORT BY PART NUMBER 6582
SCHOD PRODUCTS • NEW HARB, MINNESOTA
REPORT BY PART NUMBER 6582
SCHOD PRODUCTS • NEW HARB, MINNESOTA
REPORT BY PART NUMBER 6582



NOTES

- FIVE FOOT TRANSITION FROM B-6 CURB TO SURMOUNTABLE CURB IS REQUIRED PER ELK RIVER SPECIFICATIONS
- WEAR COURSE ASPHALT (EXCEPT TURN LANE) TO BE INSTALL IN 2002
- STREET ADJUSTMENT RINGS TO BE USED FOR WEAR COURSE PAVEMENT MANHOLES

BENCHMARK:
TOP OF IRON PIPE AS SHOWN
ELEVATION=922.75 FT. (NGDV-1929)



**RECORD PLANS,
CONTRACTOR, C.W. HOULE
MARCH 2002**

DATE	BY	REVISIONS	REVISION
3-9-01	DS	CITY COMMENTS	
3-2002	SJM	RECORD DRAWING	

I HEREBY CERTIFY THAT THIS PLAN, SPECIFICATION, OR REPORT WAS PREPARED BY ME OR UNDER MY DIRECT SUPERVISION AND THAT I AM A DULY LICENSED PROFESSIONAL ENGINEER UNDER THE LAWS OF THE STATE OF MINNESOTA.

Kenneth Adolf
Kenneth Adolf
DATE: 01-29-01 REG. NO. 12048

REVIEWED BY: _____ DATE: _____

SCHOELL & MADSON, INC.
ENGINEERS * SURVEYORS * PLANNING
SOIL TESTING * ENVIRONMENTAL SERVICES
10580 WAYZATA BOULEVARD, SUITE 1
MINNETONKA, MN 55305
(952) 546-7601 FAX: (952) 546-9065
www.schoellmadson.com

OWNER/DEVELOPER
WINDSOR DEVELOPMENT
9145 EDINBURGH LANE
WOODBURY, MN 55125
DATE: JAN, 2001

PROJECT NAME/SHEET TITLE
**WINDSOR OAK HILL
ELK RIVER, MN
195TH COURT
STREET CONSTRUCTION**