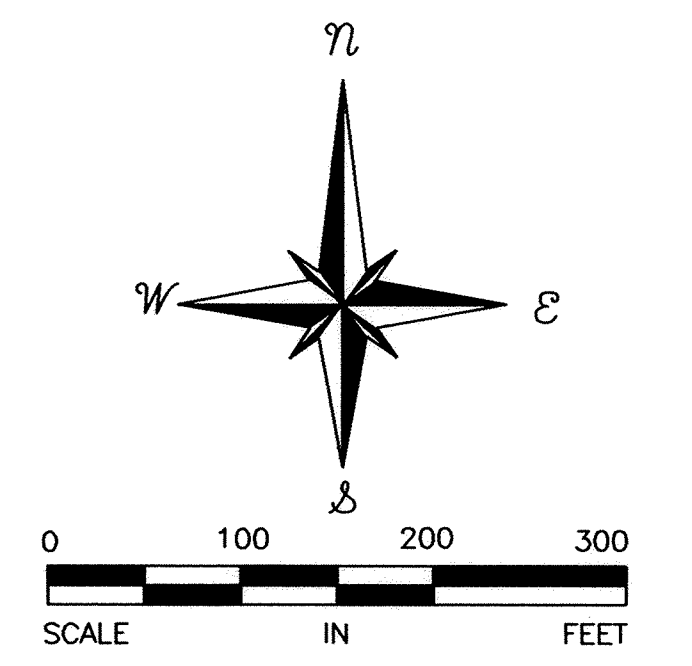
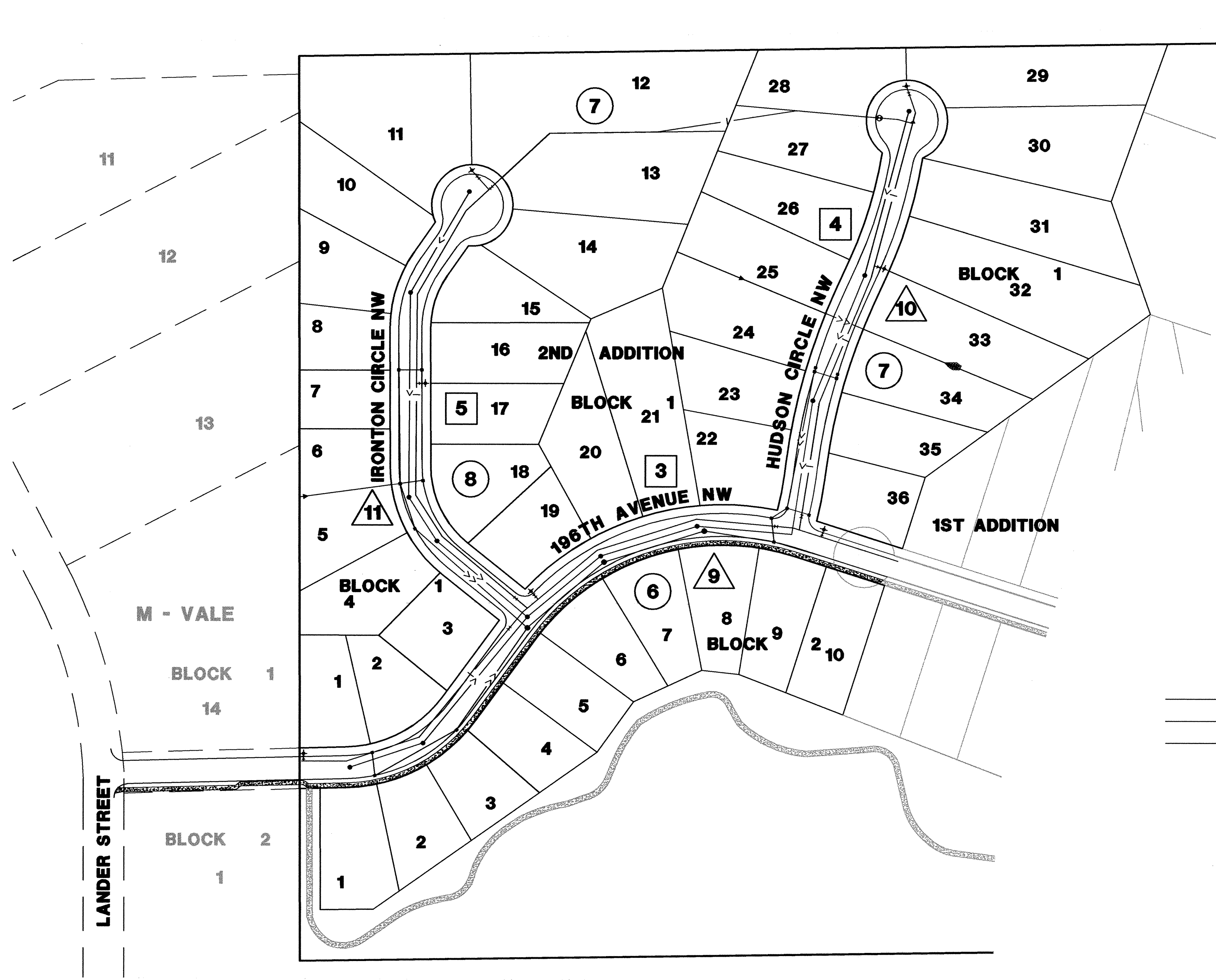


PROJECTS • NEW HOPE, MINNESOTA
REGISTERED BY PART NUMBER 0558

SCHOELL PRODUCTS • NEW HOPE, MINNESOTA
REGISTERED BY PART NUMBER 0558

SCHOELL PRODUCTS • NEW HOPE, MINNESOTA
REGISTERED BY PART NUMBER 0558

SCHOELL PRODUCTS • NEW HOPE, MINNESOTA
REGISTERED BY PART NUMBER 0558



- 3 STREET CONSTRUCTION
- 7 SANITARY & WATERMAIN
- 11 STORM SEWER

- LEGEND
- DENOTES PROPOSED STORM SEWER
 - DENOTES PROPOSED WATERMAIN
 - DENOTES PROPOSED SANITARY SEWER

**RECORD PLANS,
CONTRACTOR: C.W. HOULE
JANUARY 2003**

DATE	BY	REVISIONS	REVISION
4/25/02	DRL	CITY COMMENTS	
1-2003	KEJ	RECORD DRAWING	

I HEREBY CERTIFY THAT THIS PLAN, SPECIFICATION, OR REPORT WAS PREPARED BY ME OR UNDER MY DIRECT SUPERVISION AND THAT I AM A DULY LICENSED PROFESSIONAL ENGINEER UNDER THE LAWS OF THE STATE OF MINNESOTA.

Kenneth Adolf
KENNETH ADOLF
DATE: 03-25-02 REG. NO. 12048

REVIEWED BY: _____ DATE: _____

SCHOELL & MADSON, INC.
ENGINEERS • SURVEYORS • PLANNING
SOIL TESTING • ENVIRONMENTAL SERVICES
10580 WAYZATA BOULEVARD, SUITE 1
MINNETONKA, MN 55305
(952) 546-7601 FAX: (952) 546-9065
www.schoellmadson.com

OWNER/DEVELOPER
WINDSOR DEVELOPMENT
9145 EDINBURGH LANE
WOODBURY, MN 55125
DATE: MARCH, 2002

PROJECT NAME/SHEET TITLE
**WINDSOR OAK HILL 2ND ADDITION
ELK RIVER, MN
INDEX SHEET**