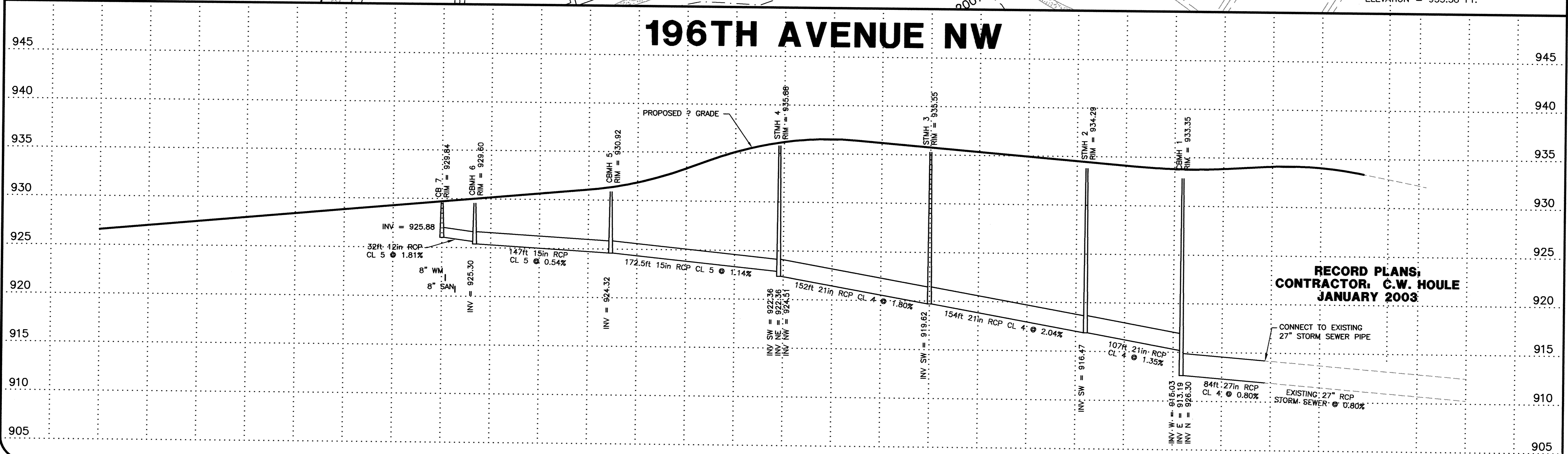


NOTE
 1. STATIONING SHOW FOR MANHOLES ON THIS PLAN IS CENTERLINE STREET STATION.
 2. SEE DETAIL SHEET FOR CASTING SCHEDULE.

BENCHMARK:
 TOP NUT OF HYDRANT AT SE CORNER
 196TH AVENUE NW AND ELGIN STREET NW
 ELEVATION = 933.38 FT.

196TH AVENUE NW



**RECORD PLANS,
 CONTRACTOR: C.W. HOULE
 JANUARY 2003**

CONNECT TO EXISTING
 27" STORM SEWER PIPE

EXISTING 27" RCP
 STORM SEWER @ 0.80%

DATE	BY	REVISIONS	REVISION
4/25/02	DRL	CITY COMMENTS	
1-2003	KEJ	RECORD DRAWING	

I HEREBY CERTIFY THAT THIS PLAN, SPECIFICATION, OR REPORT WAS PREPARED BY ME OR UNDER MY DIRECT SUPERVISION AND THAT I AM A DULY LICENSED PROFESSIONAL ENGINEER UNDER THE LAWS OF THE STATE OF MINNESOTA.
Kenneth Adolf
 KENNETH ADOLF
 DATE: 03-25-02 REG. NO. 12048
 REVIEWED BY: _____ DATE: _____
P:\EN616846\056\16001\SYM01001.DWG, 03/07/03 10:07:27 AM, SherryM, 13

SCHOELL & MADSON, INC.
 ENGINEERS * SURVEYORS * PLANNING
 SOIL TESTING * ENVIRONMENTAL SERVICES
 10580 WAYZATA BOULEVARD, SUITE 1
 MINNETONKA, MN 55305
 (952) 546-7601 FAX: (952) 546-9065
 www.schoellmadson.com

OWNER/DEVELOPER
WINDSOR DEVELOPMENT
 9145 EDINBURGH LANE
 WOODBURY, MN 55125
 DATE: MARCH, 2002

PROJECT NAME/SHEET TITLE
WINDSOR OAK HILL 2ND ADDITION
 ELK RIVER, MN
STORM SEWER PLAN