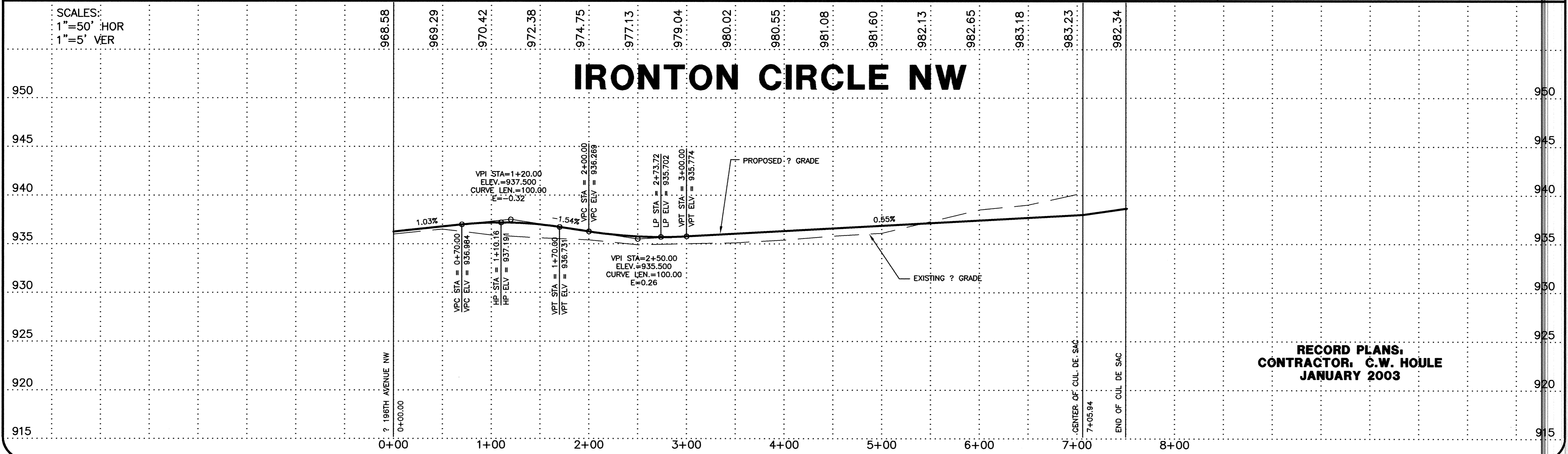


NOTES

- FIVE FOOT TRANSITION FROM B-6 CURB TO SURMOUNTABLE CURB IS REQUIRED PER ELK RIVER SPECIFICATIONS.
- STREET ADJUSTMENT RINGS TO BE USED FOR WEAR COURSE PAVEMENT MANHOLES.

BENCHMARK:  
 TOP NUT OF HYDRANT AT SE CORNER  
 196TH AVENUE NW AND ELGIN STREET NW  
 ELEVATION = 933.38 FT.

SCALES:  
 1"=50' HOR  
 1"=5' VER



DATE	BY	REVISIONS	REVISION
4/25/02	DRL	CITY COMMENTS	
1-2003	KEJ	RECORD DRAWING HOWARD GREEN	

I HEREBY CERTIFY THAT THIS PLAN, SPECIFICATION, OR REPORT WAS PREPARED BY ME OR UNDER MY DIRECT SUPERVISION AND THAT I AM A DULY LICENSED PROFESSIONAL ENGINEER UNDER THE LAWS OF THE STATE OF MINNESOTA.

*Kenneth Adolf*  
 KENNETH ADOLF  
 DATE: 03-25-02 REG. NO. 12048

REVIEWED BY: \_\_\_\_\_ DATE: \_\_\_\_\_

**SCHOELL & MADSON, INC.**  
 ENGINEERS \* SURVEYORS \* PLANNING  
 SOIL TESTING \* ENVIRONMENTAL SERVICES  
 10580 WAYZATA BOULEVARD, SUITE 1  
 MINNETONKA, MN 55305  
 (952) 546-7601 FAX: (952) 546-9065  
 www.schoellmadson.com

OWNER/DEVELOPER  
**WINDSOR DEVELOPMENT**  
 9145 EDINBURGH LANE  
 WOODBURY, MN 55125  
 DATE: MARCH, 2002

PROJECT NAME/SHEET TITLE  
**WINDSOR OAK HILL 2ND ADDITION**  
 ELK RIVER, MN  
**STREET CONSTRUCTION**