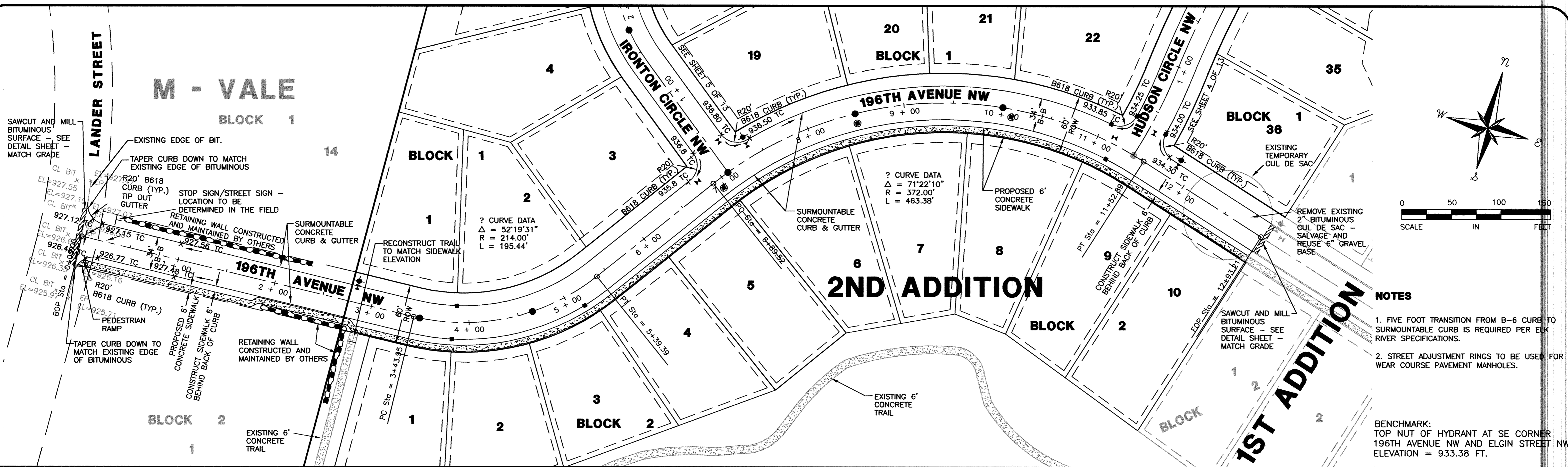
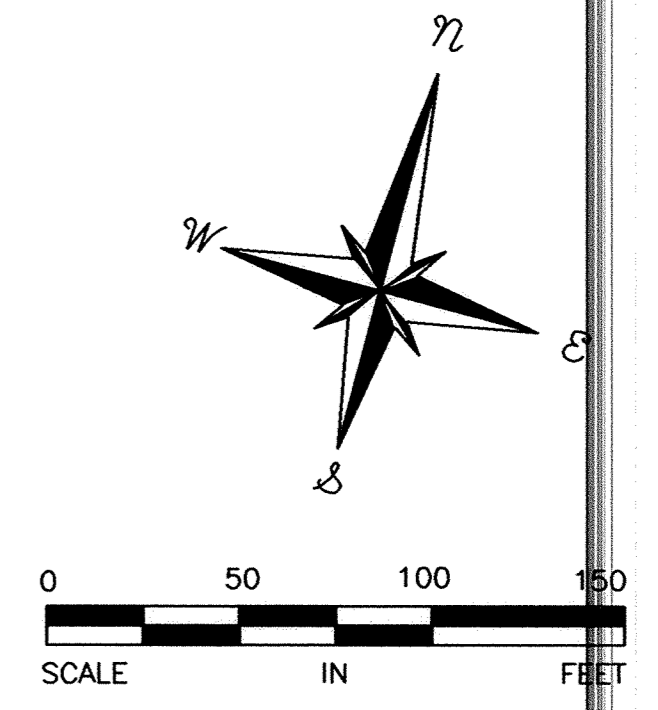
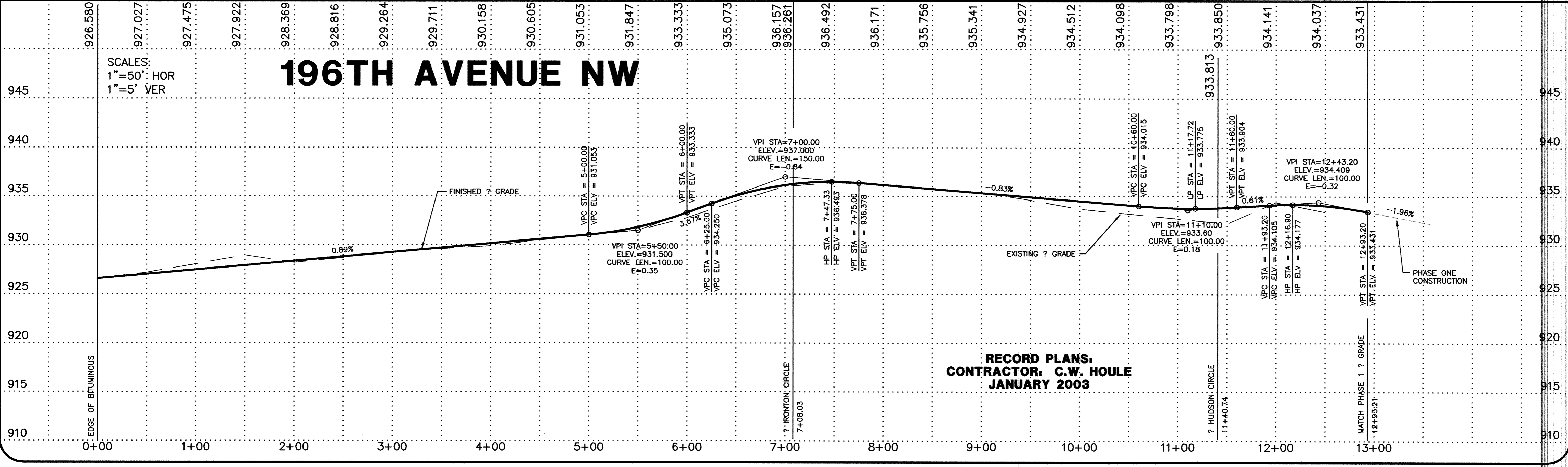


SAFCO PRODUCTS • NEW HOPK, MINNESOTA
REPRODUCED FROM DRAWING NUMBER 6592



- NOTES**
- FIVE FOOT TRANSITION FROM B-6 CURB TO SURMOUNTABLE CURB IS REQUIRED PER ELK RIVER SPECIFICATIONS.
 - STREET ADJUSTMENT RINGS TO BE USED FOR WEAR COURSE PAVEMENT MANHOLES.
- BENCHMARK:
TOP NUT OF HYDRANT AT SE CORNER
196TH AVENUE NW AND ELGIN STREET NW
ELEVATION = 933.38 FT.



DATE	BY	REVISIONS	REVISION
4/25/02	DRL	CITY COMMENTS	
5/06/02	DRL	CITY COMMENTS	
1-2003	KEJ	RECORD DRAWING	

HEREBY CERTIFY THAT THIS PLAN, SPECIFICATION, OR REPORT WAS PREPARED BY ME OR UNDER MY DIRECT SUPERVISION AND THAT I AM A DULY LICENSED PROFESSIONAL ENGINEER UNDER THE LAWS OF THE STATE OF MINNESOTA.

Kenneth Adolf
KENNETH ADOLF

DATE: 03-25-02 REG. NO. 12048

REVIEWED BY: _____ DATE: _____

SCHOELL & MADSON, INC.
ENGINEERS • SURVEYORS • PLANNING
SOIL TESTING • ENVIRONMENTAL SERVICES
10580 WAZATA BOULEVARD, SUITE 1
MINNETONKA, MN 55305
(952) 546-7801 FAX: (952) 546-9065
www.schoellmadson.com

OWNER/DEVELOPER
WINDSOR DEVELOPMENT
9145 EDINBURGH LANE
WOODBURY, MN 55125
DATE: MARCH, 2002

PROJECT NAME/SHEET TITLE
WINDSOR OAK HILL 2ND ADDITION
ELK RIVER, MN
STREET CONSTRUCTION