

REV. NO.	DATE	DESCRIPTION
1	5/25/00	SILT FENCE & RENAME CB TO MH
2	6/13/00	CITY COMMENTS
3	6/20/00	REVISED LOTS 3 & 4 BL 1 TO SWO
4	6/21/00	ADDED EMER. O.F. & SWALES
5	7/31/02	AS-BUILTS

DATE:	4/21/00
DESIGN BY:	EFM
DRAWN BY:	TGL
CHECKED BY:	TJH/EFM
DWG:	LAR-FORD.DWG
TEXT:	NONE
FILE NO.:	7825.10-03

I hereby certify that this plan, specification, or report was prepared by me or under my direct supervision and that I am a Licensed Professional Engineer under the laws of the State of Minnesota.

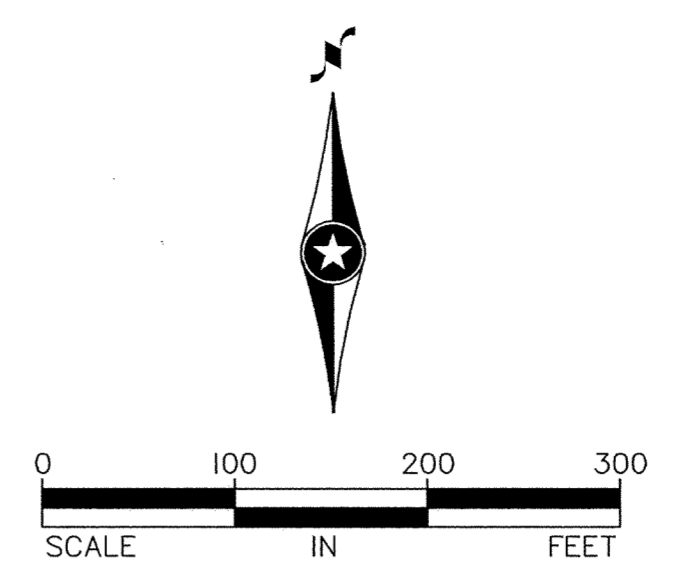
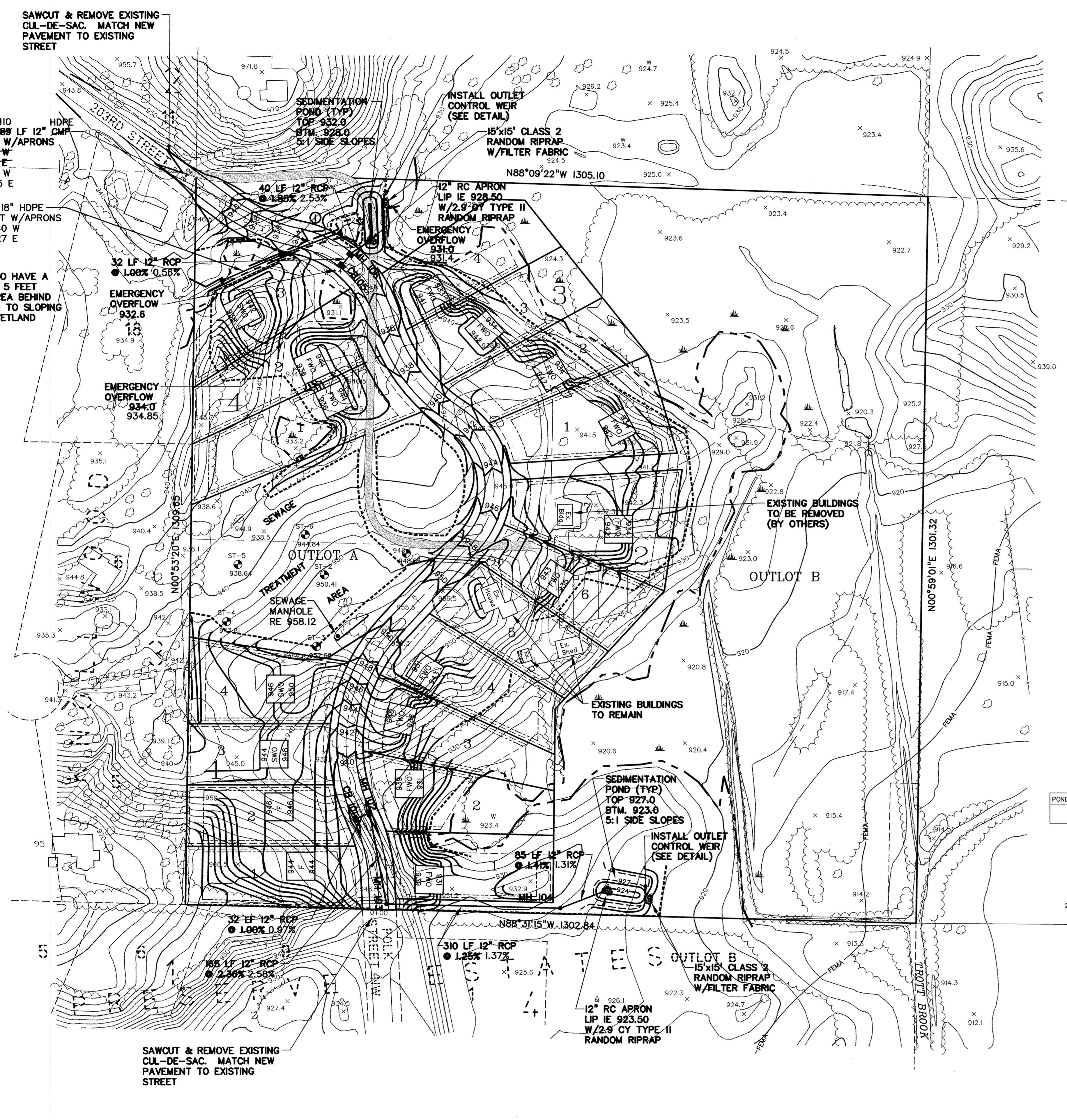
Signed: _____ Date: 5/1/00 Reg. No. 26968

John Oliver & Associates, Inc.
Civil Engineering, Land Surveying, Land Planning
580 Dodge Avenue
Elk River, Minnesota 55330
(612)441-2072 (FAX)441-5665

201 W. Travelers Trail, Suite 200
Burnsville, Minnesota 55337
(612)894-3045 (FAX)894-3049

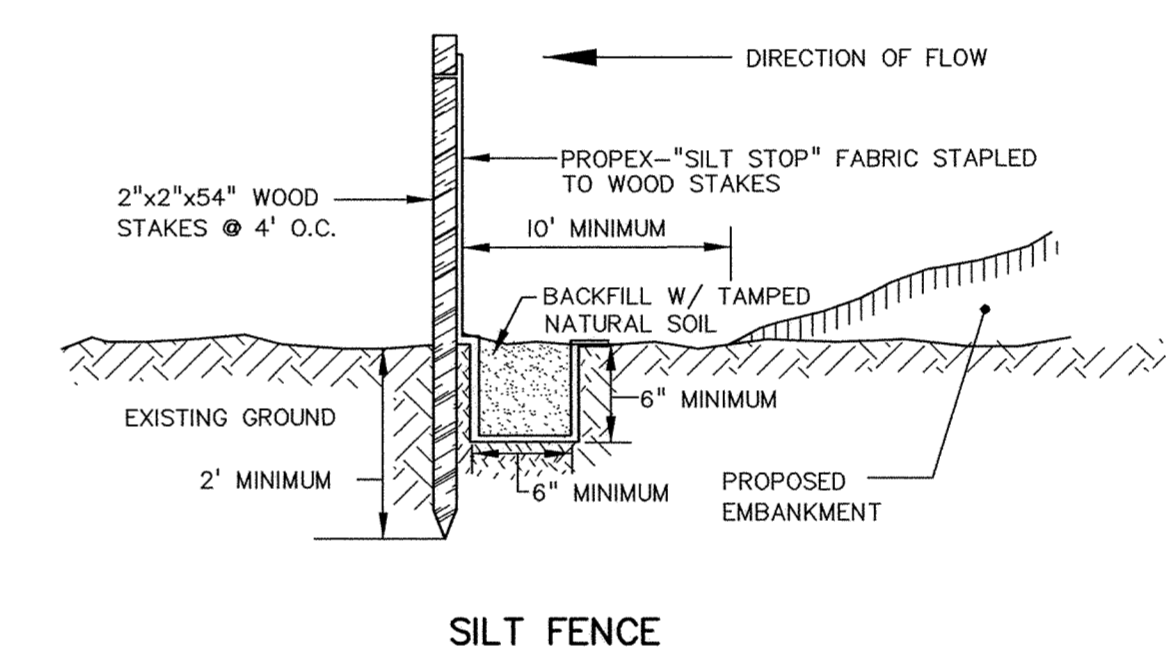
WHITETAIL RIDGE
ELK RIVER, MN
FOR
DENNIS PECK
FINAL GRADING PLAN

SHEET NO. 1 OF 2



- LEGEND**
- 892 Existing Contours
 - 898 Proposed contours
 - Silt fence
 - Haybale Checks
 - 946 FWO Possible House Pad Location
 - 938 Possible Well Location
 - Proposed Storm Sewer
 - Soil Pit
 - FEMA FEMA 100 Year Flood Line
 - Wetland Delineation by Aquatic Ecosolutions, Inc. 12/99
 - Existing Driveway to be Removed

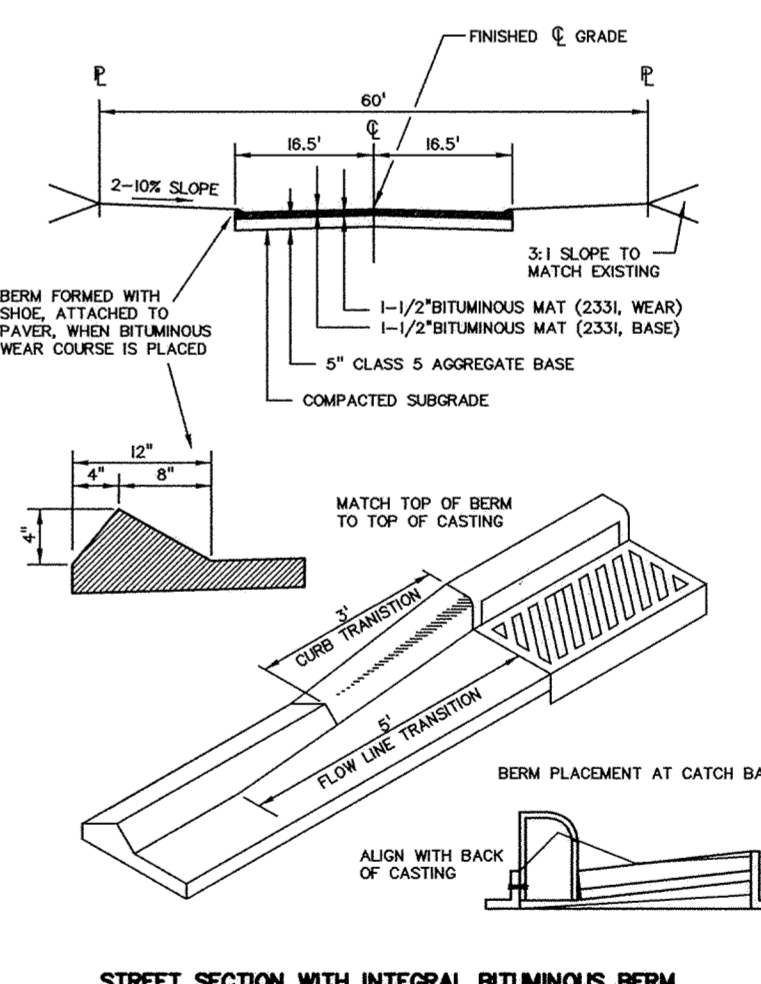
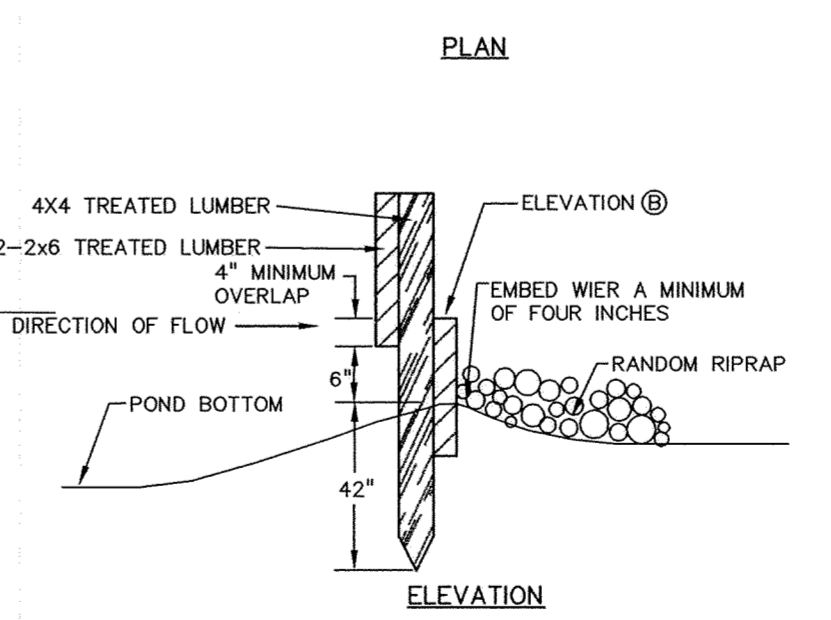
NOTES:
1. INSTALL SILT FENCE PRIOR TO SITE GRADING.



DESIGN CRITERIA:
MUST SKIM OIL AND FLOATABLE MATERIAL FROM DISCHARGE FOR RAINFALL EVENTS UP TO A ONE YEAR RETURN FREQUENCY. MAXIMUM VELOCITY THROUGH THE STRUCTURE IS 0.5 FT/SEC

BURY ENDS OF WEIR INTO BANK A MINIMUM OF 2' SO THAT FLOW WILL NOT BE ALLOWED TO PASS AROUND WEIR.

POND SKIMMER	(A)	(B)
South	12.0'	927.5
North	12.0'	931.4



STORM SEWER SCHEDULE

STRUCTURE	SIZE	CASTING	RE	IE	RE	IE
CB 101	24x36	R3067V	937.65	934.68	938.09	934.84
MH 102	24x36	R3067V	937.65	934.33	937.98	934.53
MH 103	48"Ø	R3067V	938.60	928.60	938.47	928.87
MH 104	48"Ø	R1733	928.00	924.70	927.31	924.61
CB 105	24x36	R3067V	932.56	929.56	932.99	929.69
MH 106	24x36	R3067V	932.56	929.24	933.16	929.51

SEE SHEET 2 FOR PROFILE VIEW AND ADDITIONAL STORM SEWER INFORMATION

SACCO PRODUCTS • NEW HOPE, MINNESOTA
REVISION BY PART NUMBER 0502