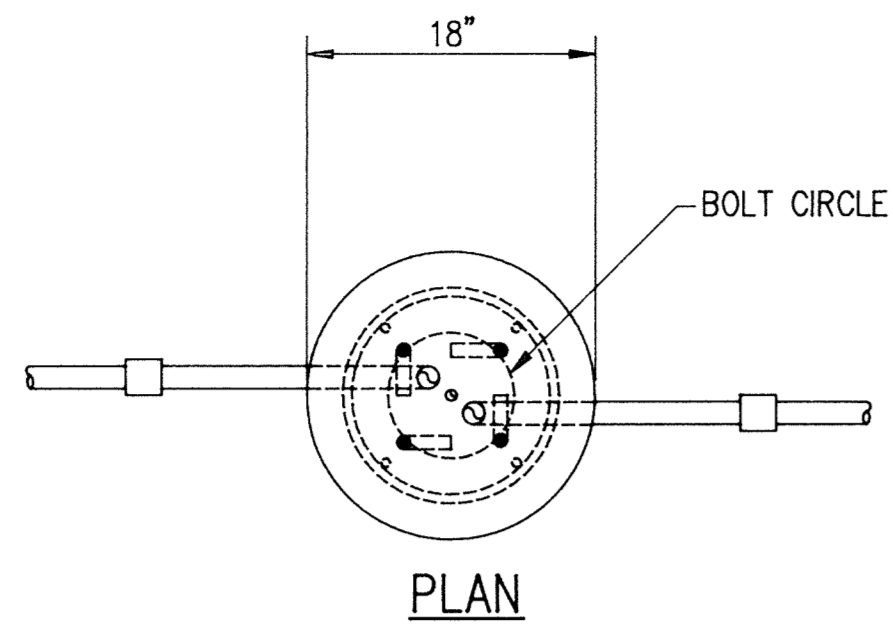


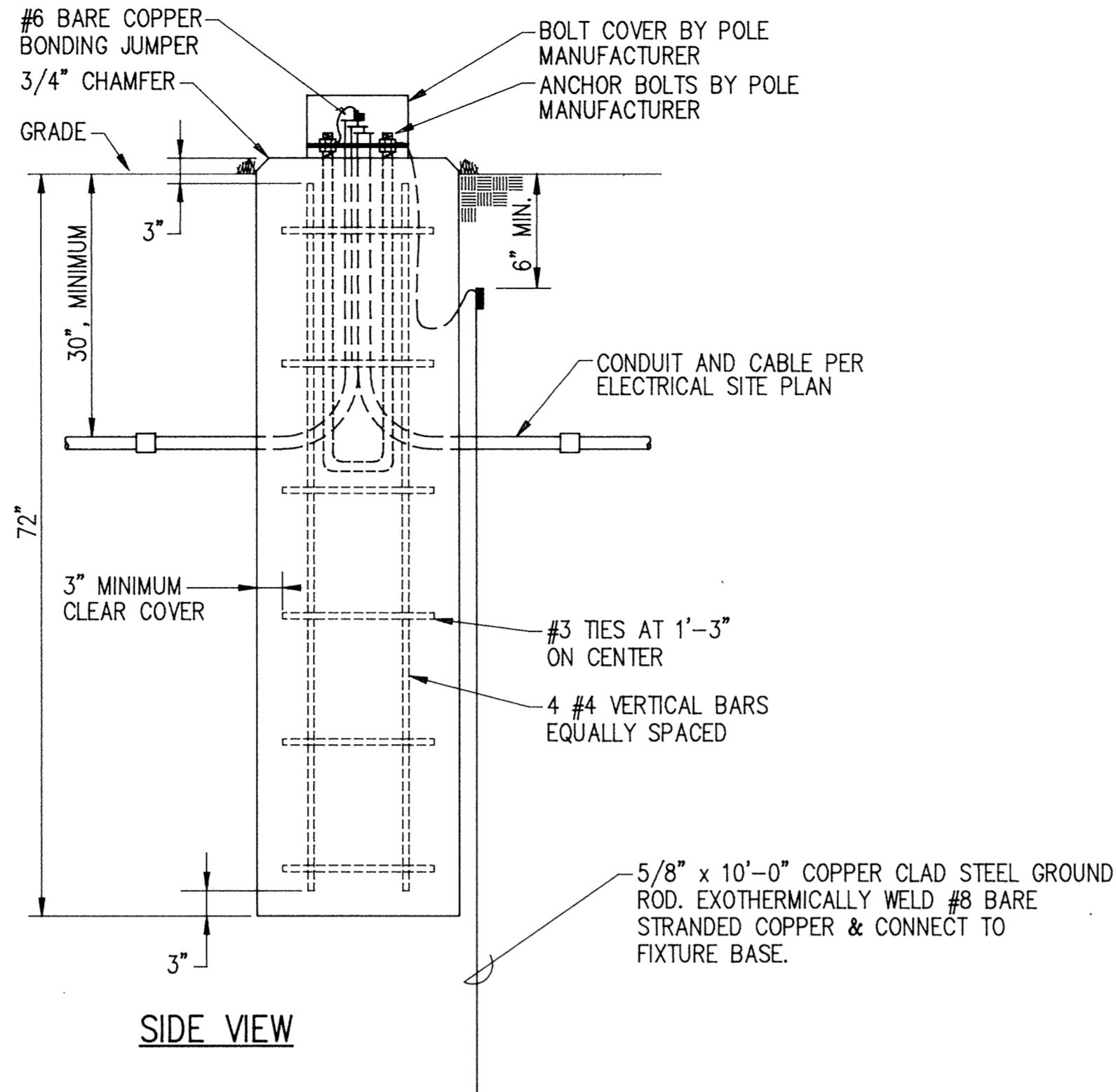
PLAN: GRD=10, SNAP=1.0 DTEXT/DIM: GRD=12.5, SNAP=3.125

KAI#92308B1



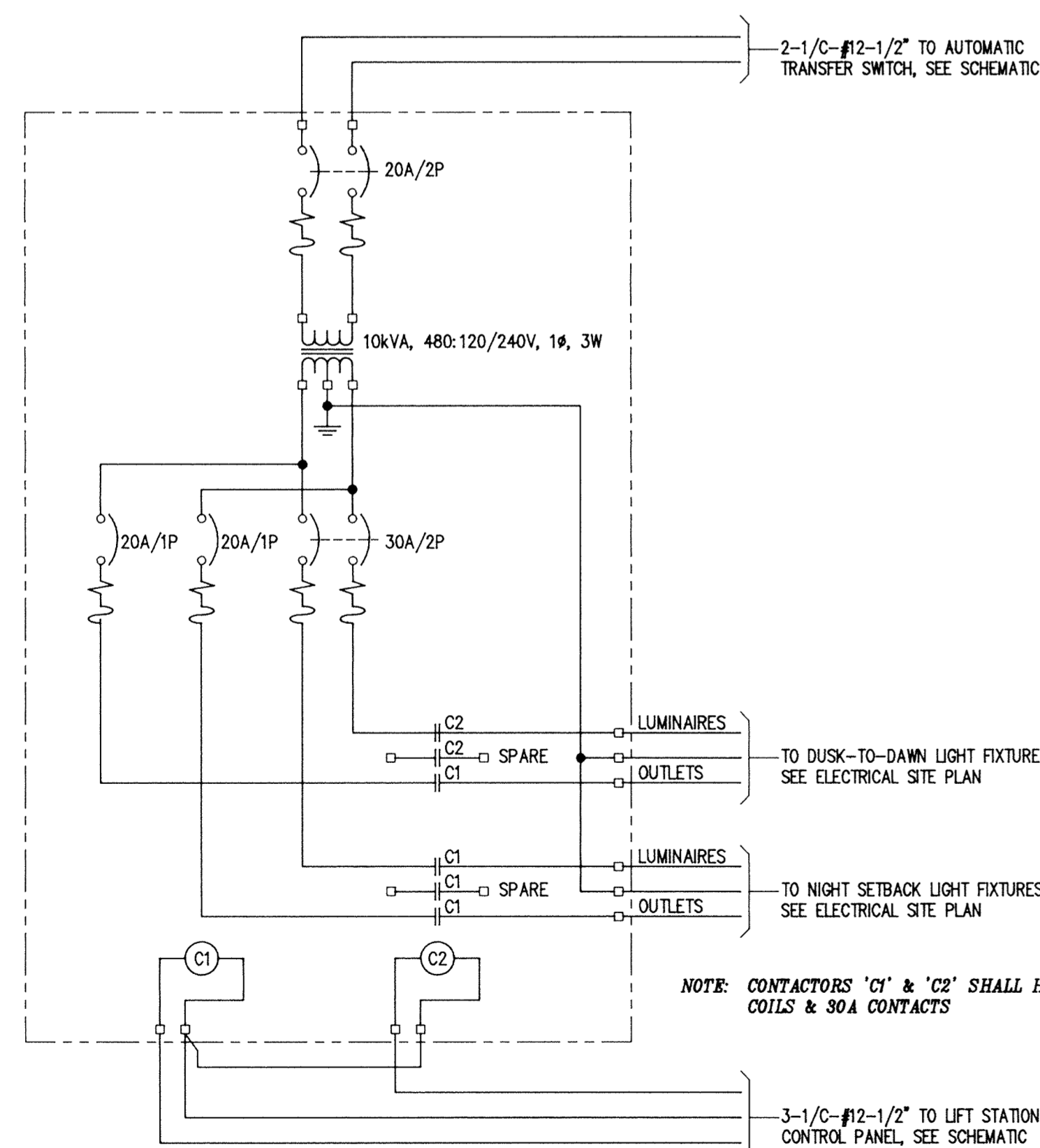
CONCRETE BASE NOTES

1. CONCRETE SHALL HAVE 6% AIR ENTRAINMENT AND A 28 DAY STRENGTH OF 4000 PSI.
2. REINFORCING STEEL SHALL BE ASTM A615, GRADE 60, NEW BILLET, INTERMEDIATE GRADE, DEFORMED W/ 60000 PSI YIELD STRENGTH.



CONCRETE POLE BASE DETAIL

NO SCALE

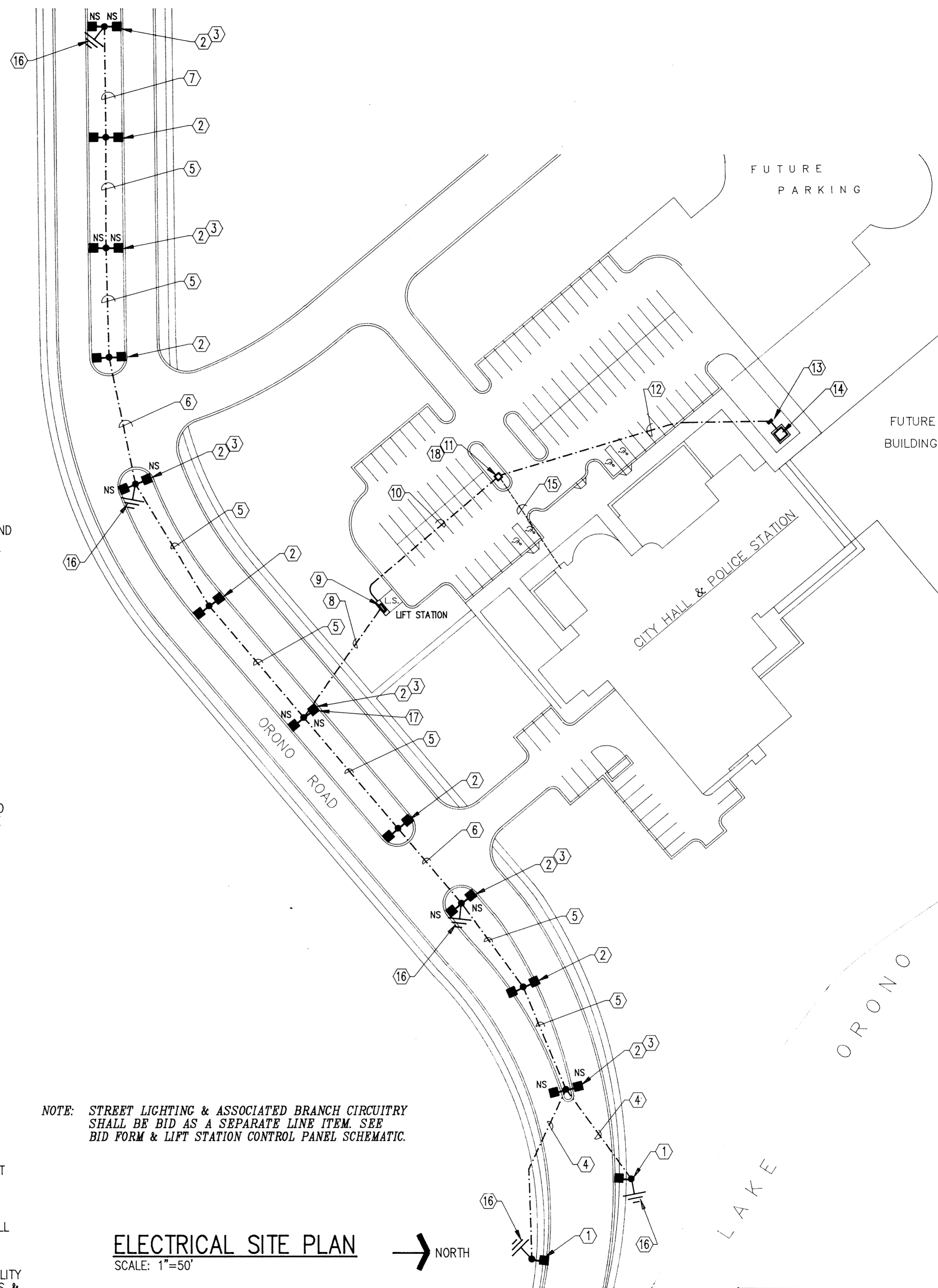


ROADWAY LIGHTING CONTROL ENCLOSURE SCHEMATIC

NO SCALE

NUMBERED NOTES

- 1 FURNISH & INSTALL STERNBERG #3612T, OR EQUAL, 12' POLE. POLE SHALL INCLUDE POLE TOP CAP, 3" DIAMETER x 3 1/2" TENON, ONE STERNBERG #80, OR EQUAL, MOUNTING BRACKET AT 11'-0" & ONE DUPLEX FESTOON RECEPTACLE MOUNTED AT 11'-0". ALSO FURNISH & INSTALL McGRAW-EDISON #UT-R-1-2-10-1-7-EZ-BK, OR EQUAL, 120V, HPS, TENON MOUNTED FIXTURE W/ REMOTE BALLAST & 1-100W-E23-CLEAR LAMP. COORDINATE FIXTURE & POLE REQUIREMENTS. POLE FINISH TO MATCH LUMINAIRE, CONFIRM W/ OWNER.
- 2 FURNISH & INSTALL STERNBERG #3612T, OR EQUAL, 12' POLE. POLE SHALL INCLUDE POLE TOP CAP, TWO 3" DIAMETER x 3 1/2" TENON, TWO STERNBERG #80, OR EQUAL, MOUNTING BRACKETS AT 11'-0" & ONE DUPLEX FESTOON RECEPTACLE MOUNTED AT 11'-0". ALSO FURNISH & INSTALL TWO McGRAW-EDISON #UT-R-1-2-10-1-7-EZ-BK, OR EQUAL, 120V, HPS, TENON MOUNTED FIXTURES W/ REMOTE BALLASTS & 2-100W-E23-CLEAR LAMPS. COORDINATE FIXTURE & POLE REQUIREMENTS. POLE FINISH TO MATCH LUMINAIRE, CONFIRM W/ OWNER. SEE NUMBERED NOTE 17.
- 3 LUMINAIRES SHALL BE ON NIGHT SETBACK CIRCUIT
- 4 3-1/C-#8-1 1/2" RIGID STEEL BURIED AT 30" MINIMUM BELOW GRADE
- 5 6-1/C-#8, 1-1/C-#8-GND-1 1/2" SCHEDULE 80 PVC BURIED AT 30" MINIMUM BELOW GRADE
- 6 6-1/C-#8-1 1/2" RIGID STEEL BURIED AT 30" MINIMUM BELOW GRADE
- 7 3-1/C-#8, 1-1/C-#8-GND-1 1/2" SCHEDULE 80 PVC BURIED AT 30" MINIMUM BELOW GRADE
- 8 6-1/C-#8 & 3-1/C-#12 (PHOTOCONTROL)-2" RIGID STEEL AT 30" MINIMUM BELOW GRADE
- 9 LIFT STATION CONTROL PANEL. SEE SCHEMATIC & LIFT STATION DETAILS
- 10 6-1/C-#250MCM & 1-1/C-#1/0-3 1/2" RIGID STEEL CONDUIT BURIED AT 30" MINIMUM BELOW GRADE.
- 11 SERVICE ENCLOSURE. SEE SERVICE ENCLOSURE DETAIL
- 12 3-1/C-#3/0, 1-1/C-#3-2" RIGID STEEL AT 30" MINIMUM BELOW GRADE
- 13 UTILITY METERING & DISCONNECT SWITCH PEDESTAL. SEE METERING & DISCONNECT SWITCH MOUNTING DETAIL
- 14 UTILITY COMPANY PAD MOUNTED TRANSFORMER. COORDINATE LOCATION
- 15 FUTURE PERMANENT LIFT STATION STANDBY POWER CIRCUITRY. CIRCUITRY NOT UNDER THIS CONTRACT
- 16 FURNISH & INSTALL GROUND ROD AT THIS LOCATION. SEE CONCRETE POLE BASE DETAIL. GROUND PER NEC ARTICLE 250
- 17 FURNISH LUMINAIRE W/ FACTORY INSTALLED 120V PHOTOCONTROL RECEPTACLE. FURNISH & INSTALL MATCHING PHOTOCONTROL DEVICE. PHOTOCONTROL SHALL FACE NORTH. SEE CONTROL PANEL SCHEMATIC FOR CONNECTIONS. TYPICAL FOR ONE LUMINAIRE ONLY.
- 18 3 PHASE CONDUCTORS & NEUTRAL CONDUCTOR FROM LIFT STATION SHALL BE CONNECTED TO UTILITY SERVICE. 3 PHASE CONDUCTORS FROM LIFT STATION SHALL BE TERMINATED W/ 3M CAST SPLICE KITS & LEFT IN SERVICE ENCLOSURE FOR FUTURE CONNECTION TO STANDBY POWER FEEDER FROM CITY HALL



ELECTRICAL SITE PLAN

SCALE: 1"=50'

RECORD PLAN JAN. 1993

This drawing was prepared by:
Kaeding & Associates, Inc.
7300 France Avenue South
Suite 330
Minneapolis, MN 55435
Telephone: (612) 831-0317
Fax: (612) 831-2179

I hereby certify that this report, plan, or specification was prepared by me or under my direct supervision and I am a duly registered Professional Engineer under the laws of the state of Minnesota.
David Stewart
Date: 15 MAR 92 Registration No.: 9955



CONSULTING ENGINEERS
Maier Stewart & Associates Inc.

1959 SLOAN PLACE

[612] 774-6021

ST. PAUL, MINNESOTA 55117

DATE	DESCRIPTION	DESIGNED	PKR/RRL
		CHECKED	SBH
		DRAWN	CPM
REVISIONS		GRAPHIC SCALE	
		0 HORIZ.	
		0 VERT.	

CITY OF ELK RIVER S.A.P. 204-113-06 ELECTRICAL SITE PLAN & DETAILS CITY HALL SITE			
DATE	MAR. 1991	SHEET	34 OF 36 SHEETS
PROJECT NO.	230-131		

DRAWING NUMBER WESTE 92 34

474