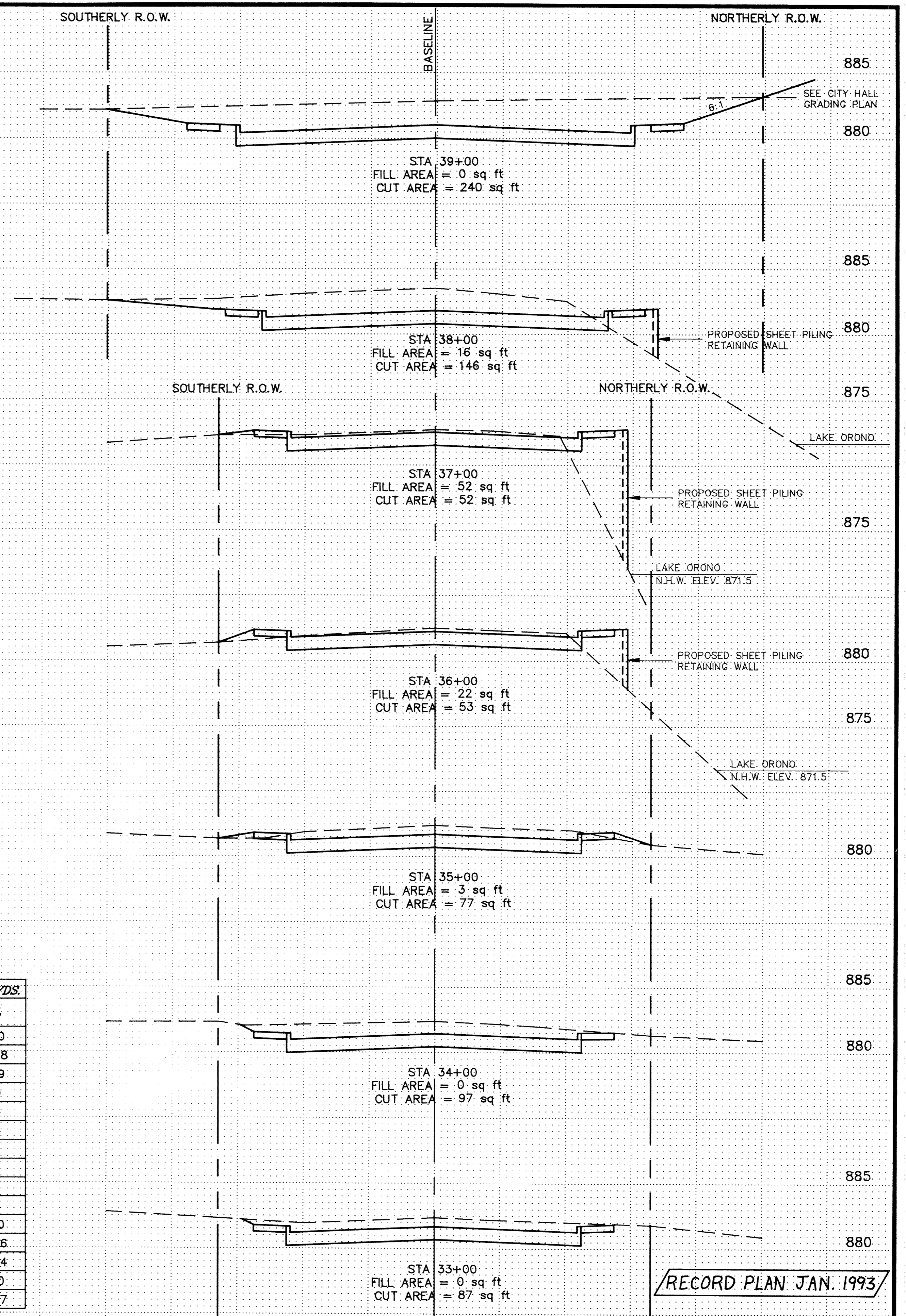
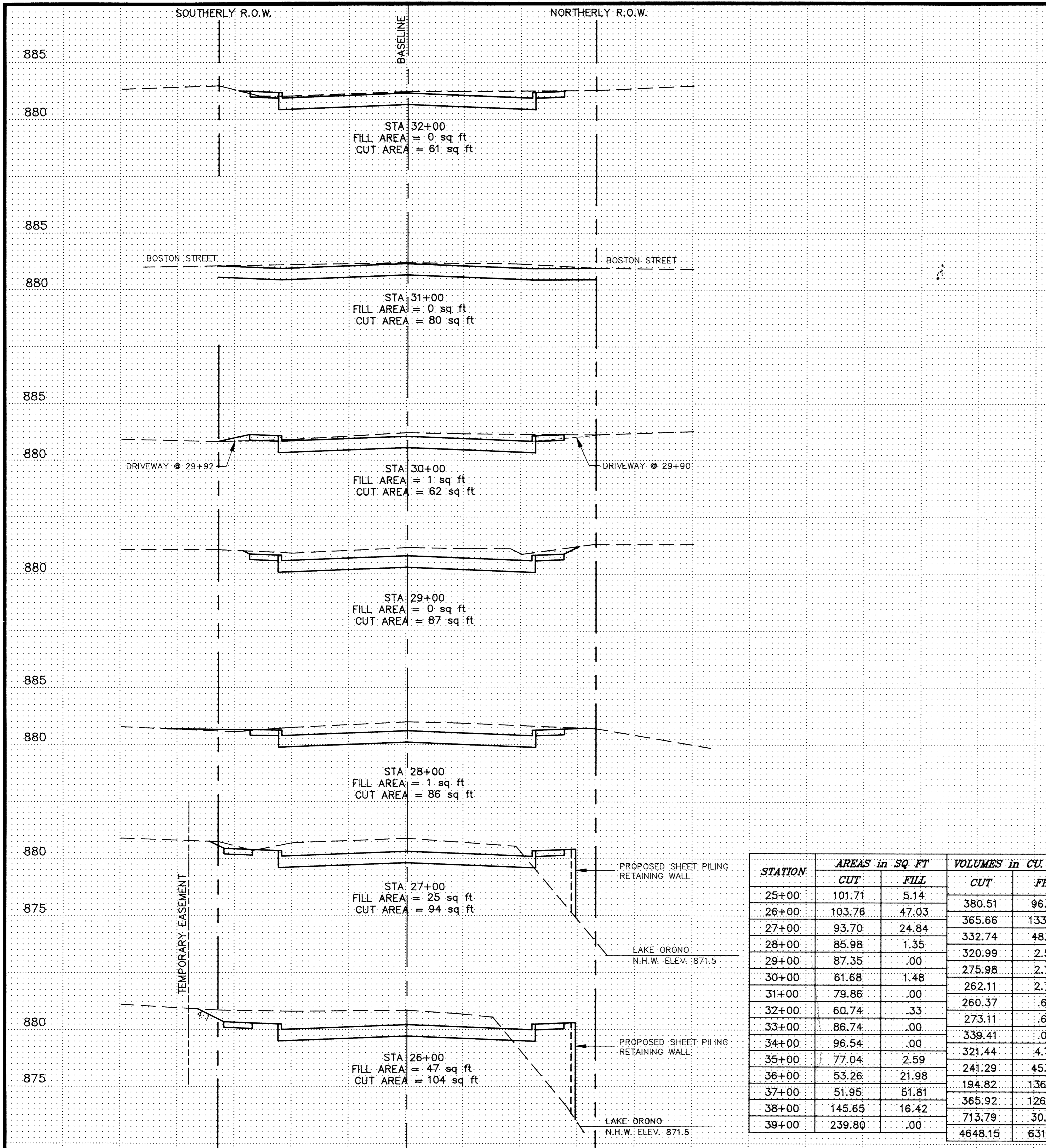


SARCO PRODUCTS • NEW HOPKINS, MINNESOTA
REPRODUCED BY PLAN NUMBER 8533
PROVIDED AS PART OF THE RECORD PLAN



RECORD PLAN JAN. 1993



STATION	AREAS in SQ FT		VOLUMES in CU. YDS.	
	CUT	FILL	CUT	FILL
25+00	101.71	5.14	380.51	96.60
26+00	103.76	47.03	365.66	133.08
27+00	93.70	24.84	332.74	48.49
28+00	85.98	1.35	320.99	2.50
29+00	87.35	.00	275.98	2.74
30+00	61.68	1.48	262.11	2.74
31+00	79.86	.00	260.37	.62
32+00	60.74	.33	273.11	.62
33+00	86.74	.00	339.41	.00
34+00	96.54	.00	321.44	4.79
35+00	77.04	2.59	241.29	45.50
36+00	53.26	21.98	194.82	136.66
37+00	51.95	61.81	365.92	126.34
38+00	145.65	16.42	713.79	30.40
39+00	239.80	.00	4648.15	631.07

CITY OF ELK RIVER
ORONO ROAD IMPROVEMENTS
STA. 29+00 TO

Scale: Horiz. 1"=10'
Vert. 1"=5'