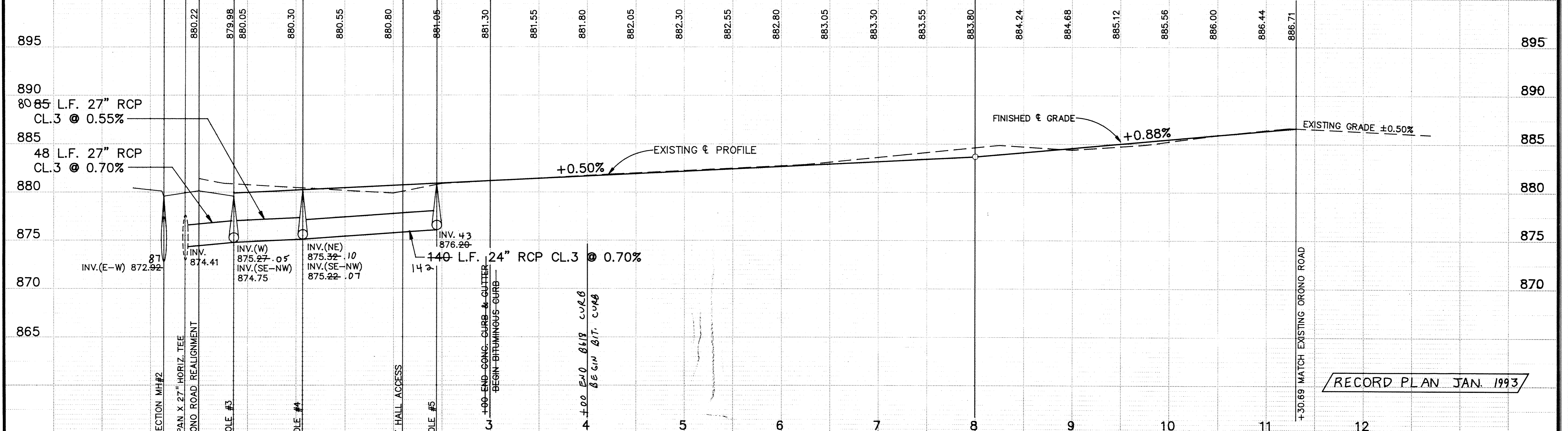
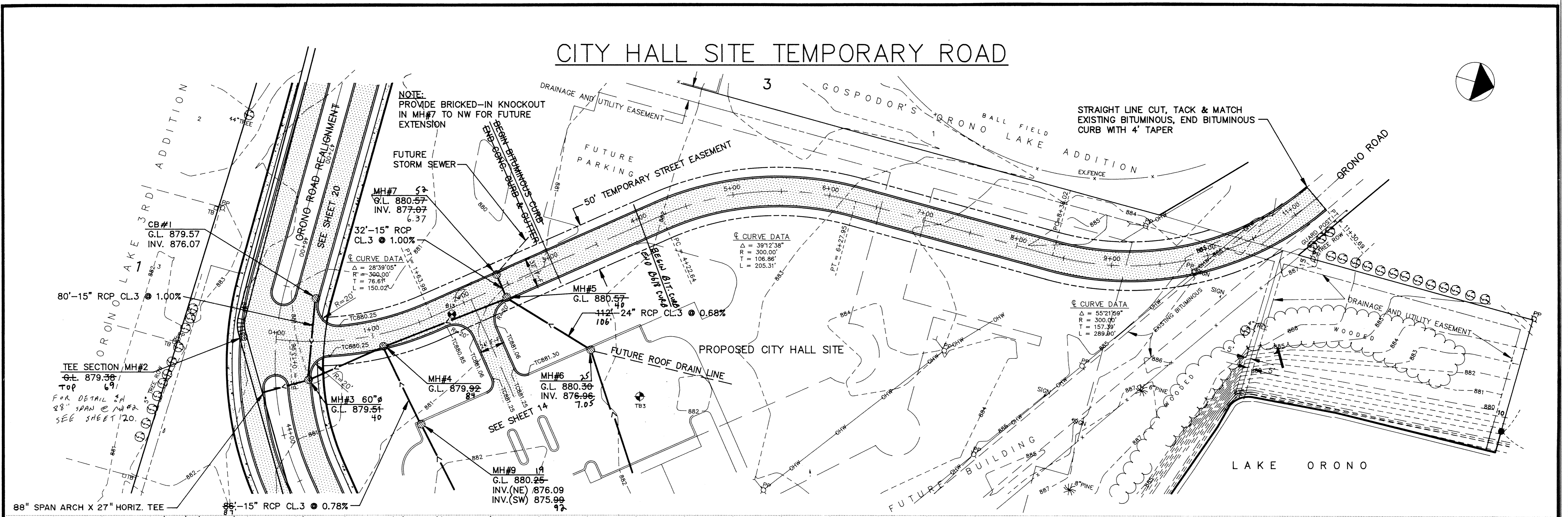
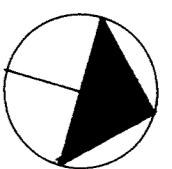


CITY HALL SITE TEMPORARY ROAD



I HEREBY CERTIFY THAT THIS PLAN, SPECIFICATION, OR REPORT WAS PREPARED BY ME OR UNDER MY DIRECT SUPERVISION AND THAT I AM A DULY REGISTERED PROFESSIONAL ENGINEER UNDER THE LAWS OF THE STATE OF MINNESOTA.

KRR

DATE 3/19/92 REG NO 20389

MS&A CONSULTING ENGINEERS

Maier Stewart & Associates Inc.

9800 SHELARD PARKWAY (612) 546-0432 MINNEAPOLIS, MINNESOTA 55441
 1959 SLOAN PLACE (612) 774-6021 ST. PAUL, MINNESOTA 55117

DATE	DESCRIPTION	DESIGNED	CHECKED	DRAWN
		KRR	PEG	GG

GRAPHIC SCALE
 HORIZ 50
 VERT 5

CITY OF ELK RIVER
 S.A.P. 204-113-06
 STREET & STORM SEWER CONSTRUCTION
 CITY HALL SITE TEMPORARY ROAD

DATE DEC. 1991 SHEET 21 OF 36 SHEETS PROJECT NO. 230-131