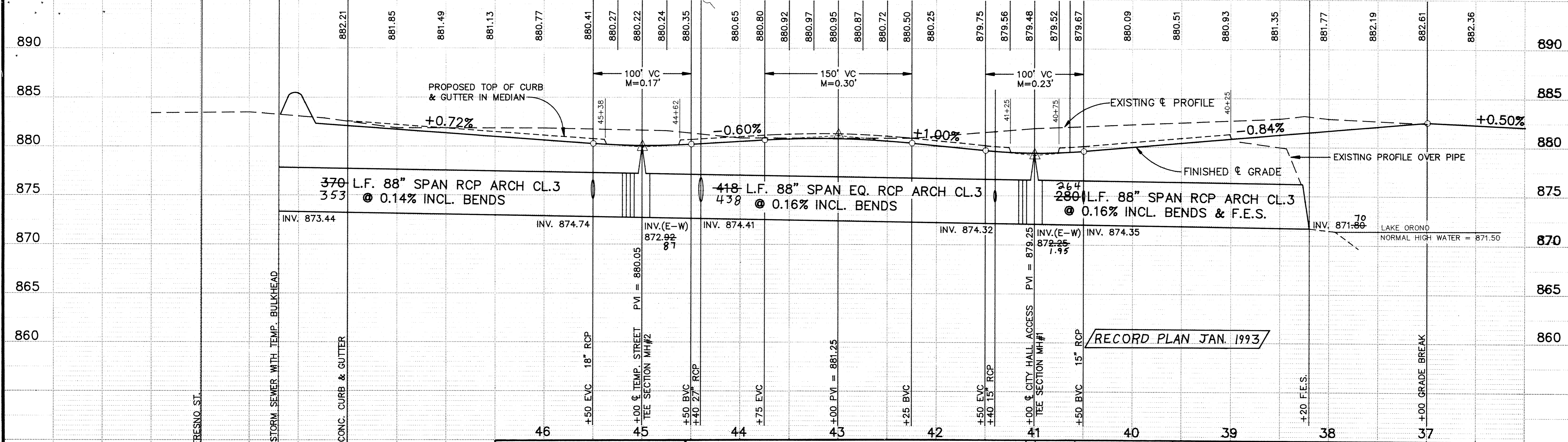
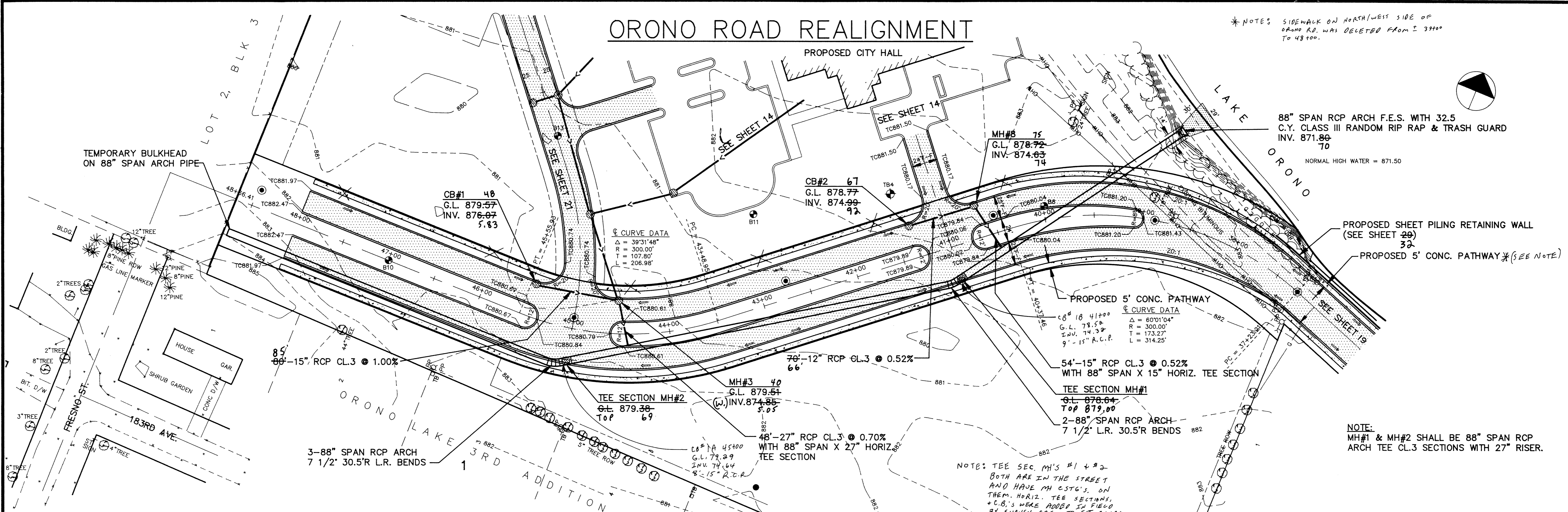
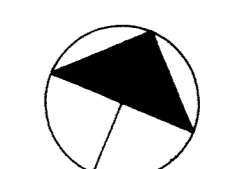


ORONO ROAD REALIGNMENT

* NOTES SIDEWALK ON NORTH/WEST SIDE OF ORONO RD. WAS DELETED FROM ± 3900 TO 4800.



HEREBY CERTIFY THAT THIS PLAN, SPECIFICATION, OR REPORT WAS PREPARED BY ME OR UNDER MY DIRECT SUPERVISION AND THAT I AM A DULY REGISTERED PROFESSIONAL ENGINEER UNDER THE LAWS OF THE STATE OF MINNESOTA.
KR Reasly
 DATE 3/19/92 REG NO 20389

MS&A CONSULTING ENGINEERS
Maier Stewart & Associates Inc.
 9800 SHELARD PARKWAY (612) 546-0432 MINNEAPOLIS, MINNESOTA 55441
 1959 SLOAN PLACE (612) 774-6021 ST. PAUL, MINNESOTA 55117

DATE	DESCRIPTION	DESIGNED - KRR	CHECKED - PEB	DRAWN - GG

GRAPHIC SCALE
 1" = 40' HORIZ. 50'
 1" = 5' VERT. 5'

CITY OF ELK RIVER
 S.A.P. 204-113-06
 STREET & STORM SEWER CONSTRUCTION
 ORONO ROAD REALIGNMENT
 DATE DEC. 1991 SHEET 20 OF 36 SHEETS PROJECT NO. 230-131

DRAWING NUMBER WESTE 92 20