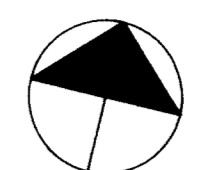


# ORONO ROAD

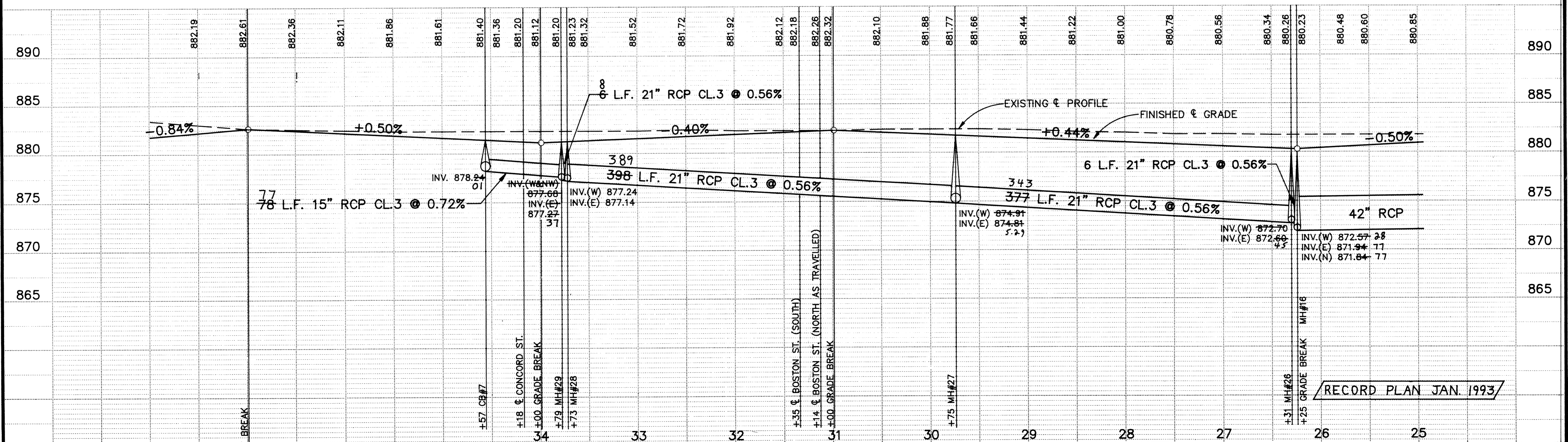
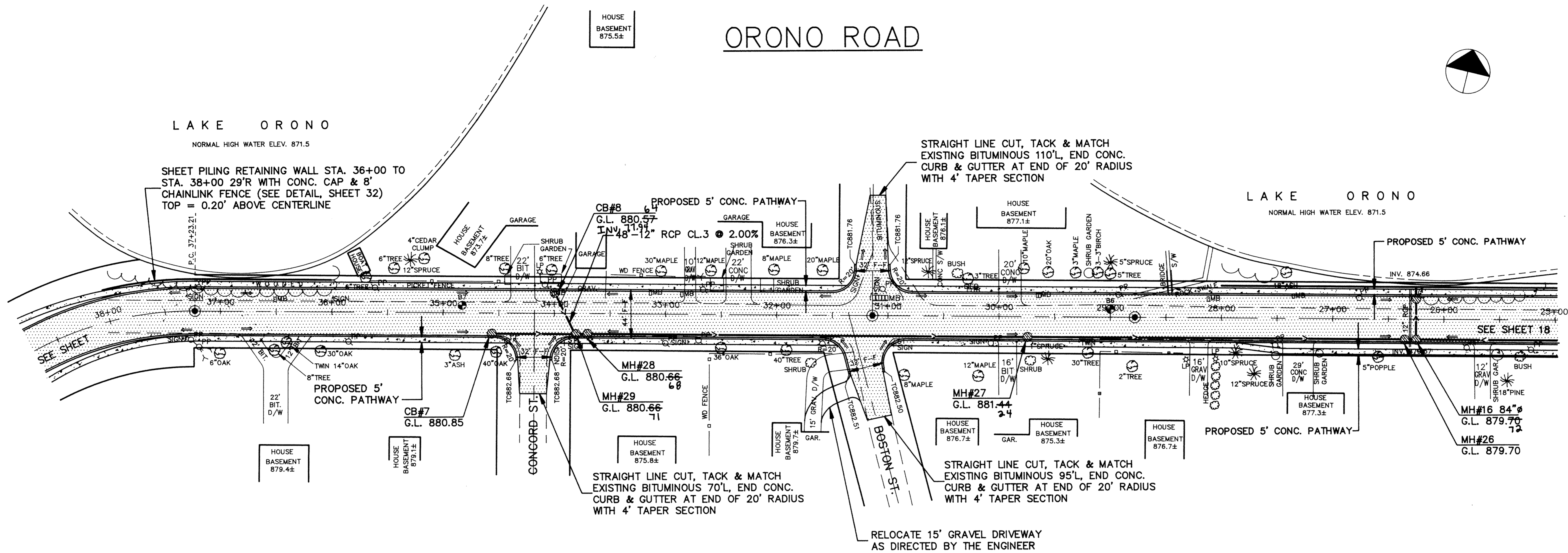


LAKE ORONO

NORMAL HIGH WATER ELEV. 871.5

LAKE ORONO

NORMAL HIGH WATER ELEV. 871.5



RECORD PLAN JAN. 1993

I HEREBY CERTIFY THAT THIS PLAN, SPECIFICATION, OR REPORT WAS PREPARED BY ME OR UNDER MY DIRECT SUPERVISION AND THAT I AM A DULY REGISTERED PROFESSIONAL ENGINEER UNDER THE LAWS OF THE STATE OF MINNESOTA.

*KR Ross*

DATE 3/19/92 REG. NO. 20389

**MSA** CONSULTING ENGINEERS

**Maier Stewart & Associates Inc.**

9800 SHELARD PARKWAY (612) 546-0432 MINNEAPOLIS, MINNESOTA 55441  
 1959 SLOAN PLACE (612) 774-6021 ST. PAUL, MINNESOTA 55117

DATE	DESCRIPTION	DESIGNED	CHECKED	DRAWN
		KRR	PER	CC

GRAPHIC SCALE	HORIZ. 50'
VERT. 5'	

CITY OF ELK RIVER  
 S.A.P. 204-113-06  
 STREET & STORM SEWER IMPROVEMENTS  
 ORONO ROAD

DATE DEC. 1991 SHEET 19 OF 36 SHEETS PROJECT NO. 230-131