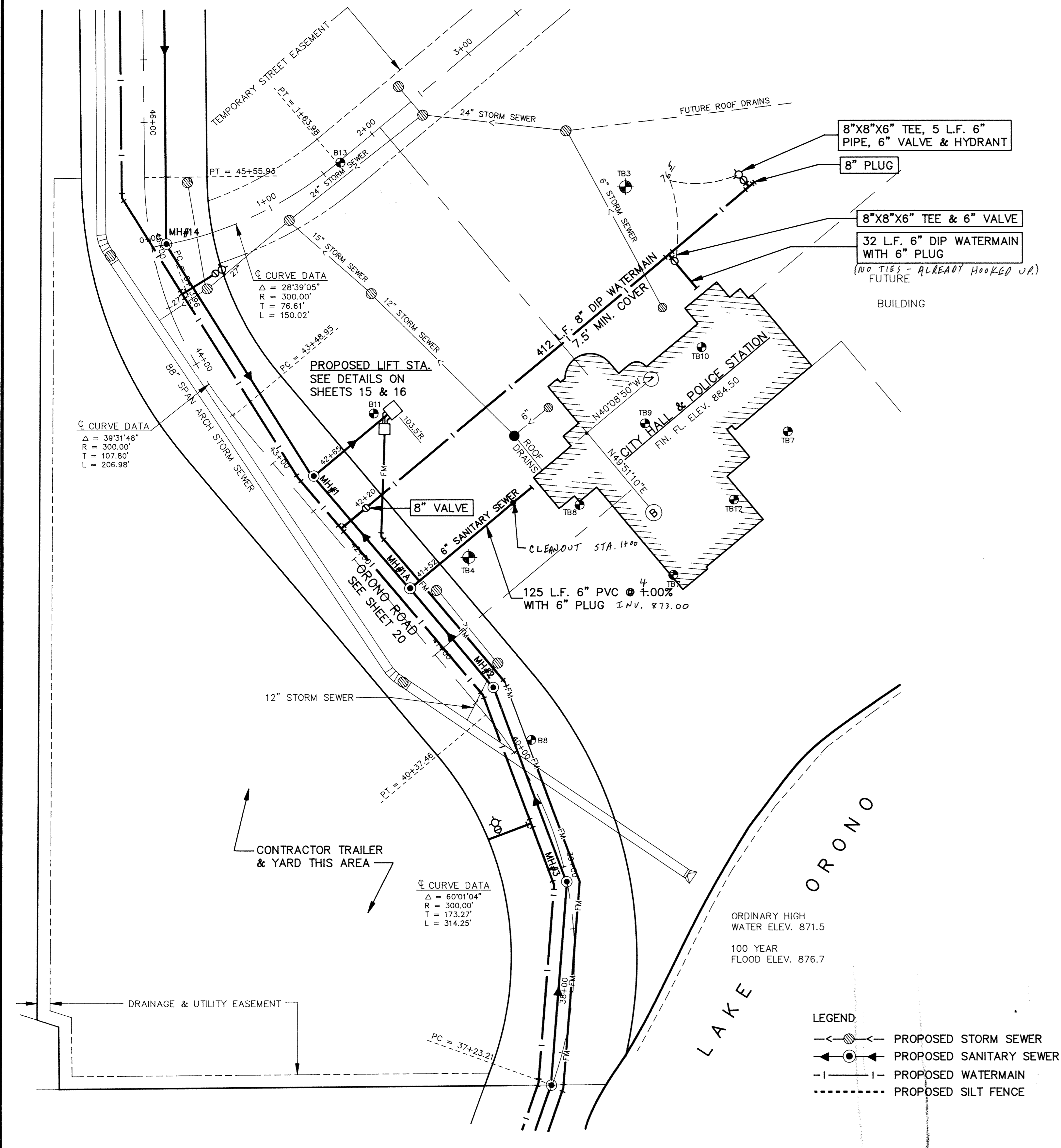


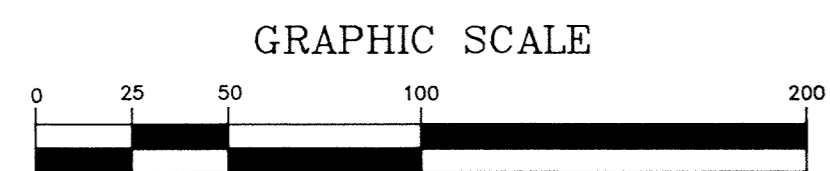
- NOTES:**
1. ALL SPOT ELEVATIONS ARE TOP OF CURB
  2. CONTRACTOR SHALL COORDINATE RELOCATION OF POWER POLES AND OVERHEAD WIRES WITH PROPER UTILITY COMPANIES PRIOR TO CONSTRUCTION.
  3. 24' ACCESS STREETS & PARKING LOTS SHALL HAVE B612 CONC. CURB & GUTTER BEGINNING AT INTERIOR RADIUS POINTS WITH 4' B618 TO B612 TRANSITIONAL SECTION TYPICAL.
  4. FINISHED GRADING ADJACENT TO BUILDING FROM CONC. CURB & GUTTER TO BUILDING SHALL BE COMPLETED BY OTHERS.
  5. DEPRESSED CURB SHALL BE PROVIDED FOR HANDICAP RAMPS AT END OF HANDICAP PARKING SPACES AND AT ENTRANCE WALK.
  6. SEE SHEET 24 FOR SIGNING & STRIPING.



**SANITARY SEWER & WATERMAIN**

**PARKING LOT & STORM SEWER**

**RECORD PLAN JAN. 1993**



I HEREBY CERTIFY THAT THIS PLAN, SPECIFICATION, OR REPORT WAS PREPARED BY ME OR UNDER MY DIRECT SUPERVISION AND THAT I AM A DULY REGISTERED PROFESSIONAL ENGINEER UNDER THE LAWS OF THE STATE OF MINNESOTA

*K.R. Rosaly*

DATE 3/19/92 REG. NO. 20389

**Maier Stewart & Associates Inc.**  
CONSULTING ENGINEERS  
9800 SHELARD PARKWAY (612) 546-0432 MINNEAPOLIS, MINNESOTA 55441  
1959 SLOAN PLACE (612) 774-6021 ST. PAUL, MINNESOTA 55117

DATE	DESCRIPTION	DESIGNED - KRR
		CHECKED - PEB
		DRAWN - GG
		GRAPHIC SCALE
		0 HORIZ. 50
		0 VERT. 5

**CITY OF ELK RIVER**  
S.A.P. 204-113-06  
PARKING LOT, STORM SEWER, SANITARY SEWER & WATERMAIN  
CITY HALL SITE

DATE JAN. 1991 SHEET 14 OF 36 SHEETS PROJECT NO. 230-131