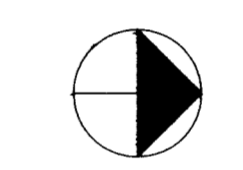
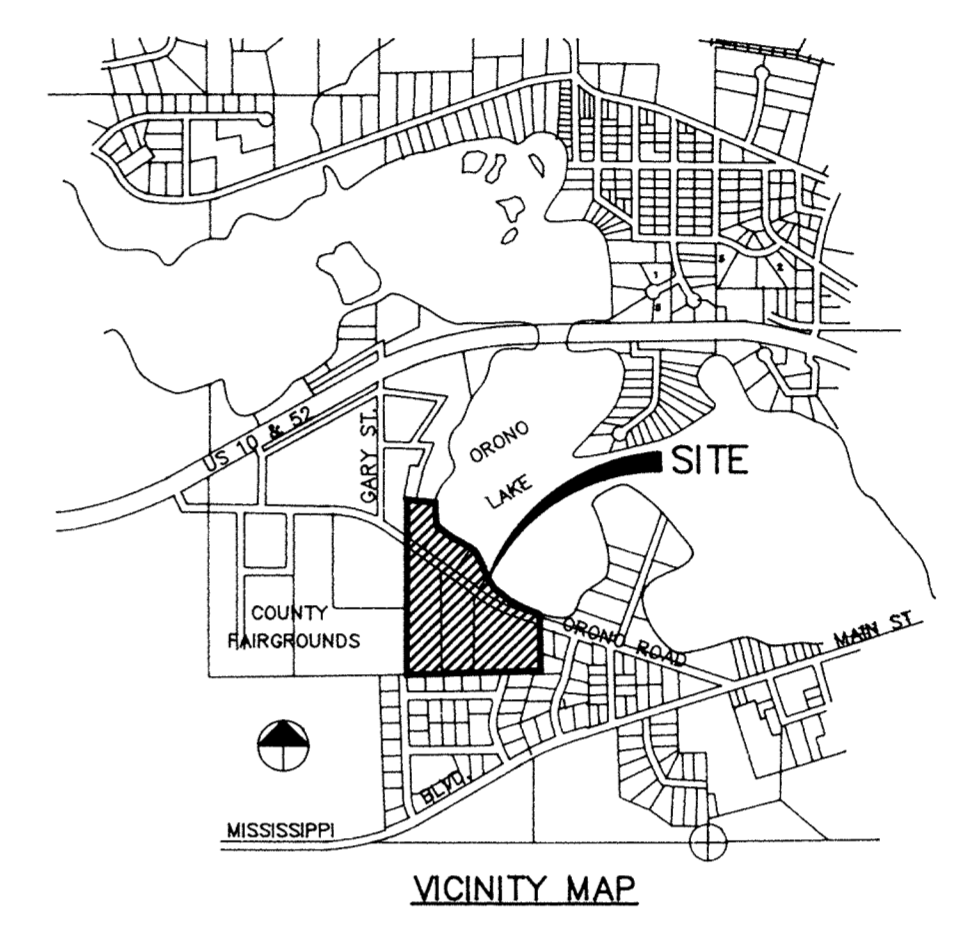
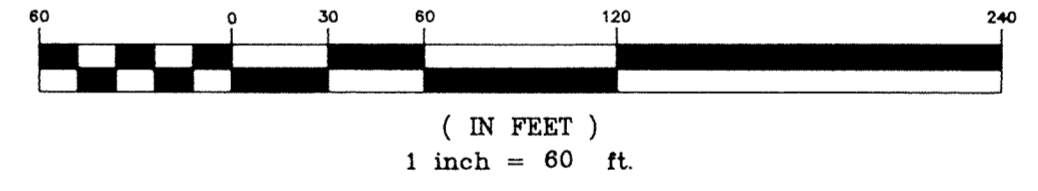


SAFCO PRODUCTS • NEW HOPE, MINNESOTA
REGISTERED PROFESSIONAL ENGINEER
MINNESOTA LICENSE NO. 15533
PROFESSIONAL SEAL OF PRINTED AND TRULY IS



GRAPHIC SCALE



LEGEND

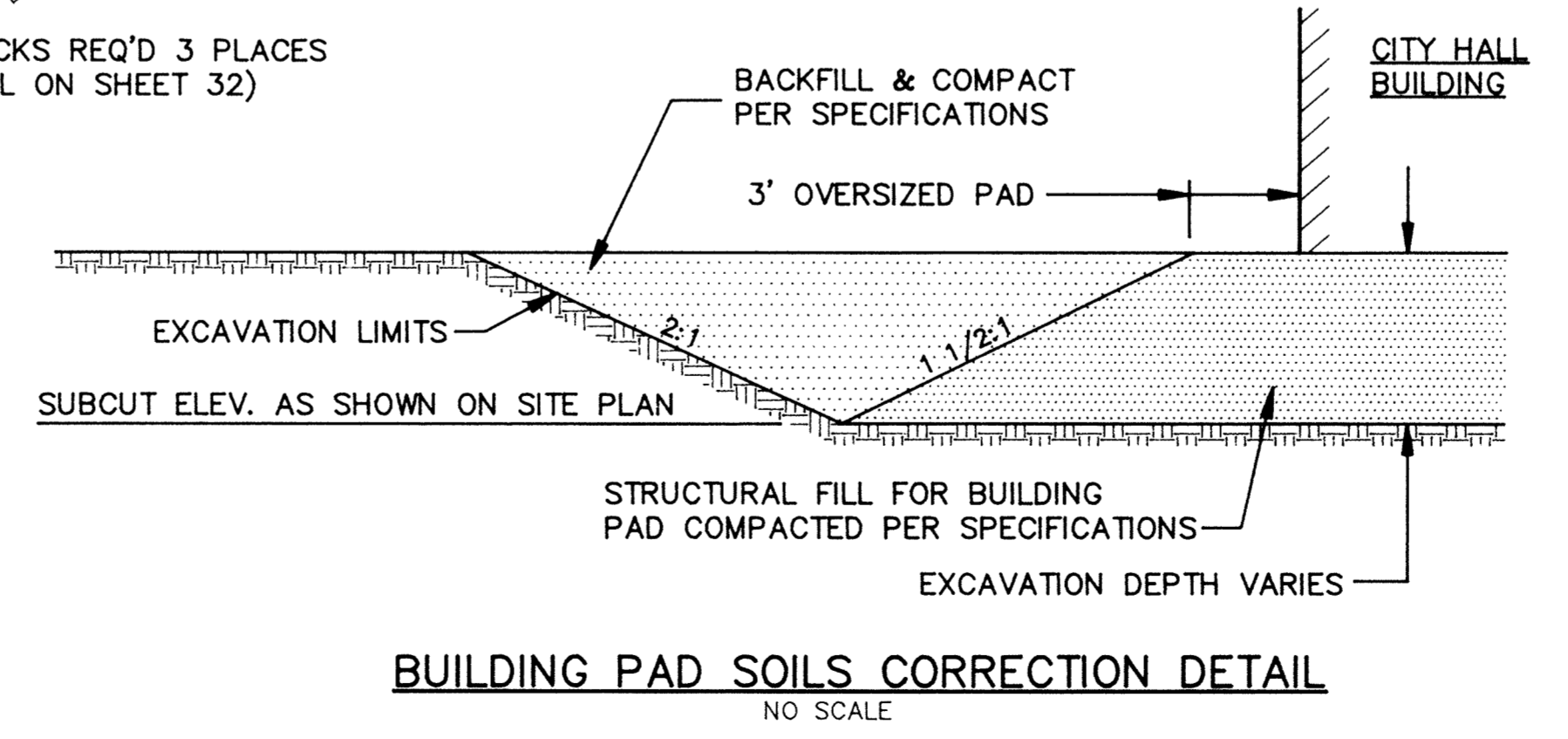
- 884 --- EXISTING CONTOURS
- 883 --- PROPOSED CONTOURS
- - - - - BUILDING SOILS CORRECTION PAD (SEE DETAIL AT LEFT)
- - - - - PROPOSED SILT FENCE (SEE DETAIL ON SHEET 32)
- (877.0) DENOTES BUILDING PAD SUBCUT ELEV. (SEE DETAIL AT LEFT & SPECIFICATIONS)

SITE EXCAVATION VOLUME

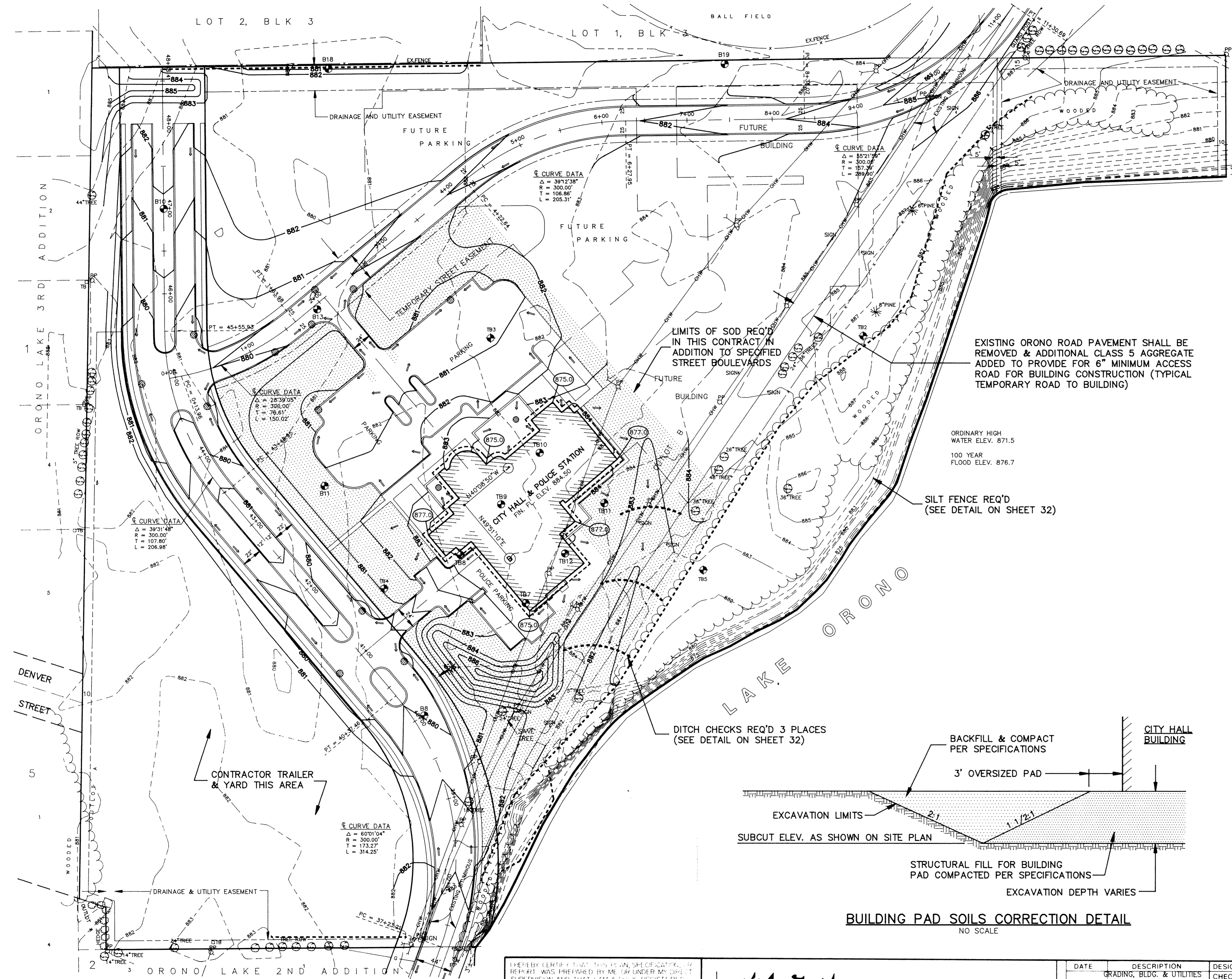
TOTAL SITE:
Cut 8,706.3 C.Y.
Fill 7,442.1 C.Y.
Net 1,264.2 C.Y. (Cut)

ORONO ROAD REALIGNMENT (WITHIN R.O.W.)
Cut 7,847.0 C.Y.
Fill 3,290.8 C.Y.
Net 4,556.2 C.Y. (Cut)

SITE OUTSIDE R.O.W.
Cut 859.3 C.Y.
Fill 7,090.8 C.Y.
Net 6,231.5 C.Y. (Fill)



BUILDING PAD SOILS CORRECTION DETAIL
NO SCALE



I HEREBY CERTIFY THAT THIS PLAN, SPECIFICATION, AND REPORT WAS PREPARED BY ME OR UNDER MY DIRECT SUPERVISION AND THAT I AM A DULY REGISTERED PROFESSIONAL ENGINEER UNDER THE LAWS OF THE STATE OF MINNESOTA.

K.R. Ross

DATE 3/19/92 REG. NO. 20389

MSA CONSULTING ENGINEERS
Maier Stewart & Associates Inc.
9800 SHELARD PARKWAY (612) 546-0432 MINNEAPOLIS, MINNESOTA 55441
1959 SLOAN PLACE (612) 774-6021 ST. PAUL, MINNESOTA 55117

DATE	DESCRIPTION	DESIGNED	KRR
	GRADING, BLDG. & UTILITIES	CHECKED	PFB
		DRAWN	GG
		GRAPHIC SCALE	
		0 HORIZ	
		0 VERT	

CITY OF ELK RIVER			
S.A.P. 204-113-06			
CITY HALL SITE			
GRADING PLAN			
DATE	SHEET	OF SHEETS	PROJECT NO.
FEB. 1992	13	36	230-131