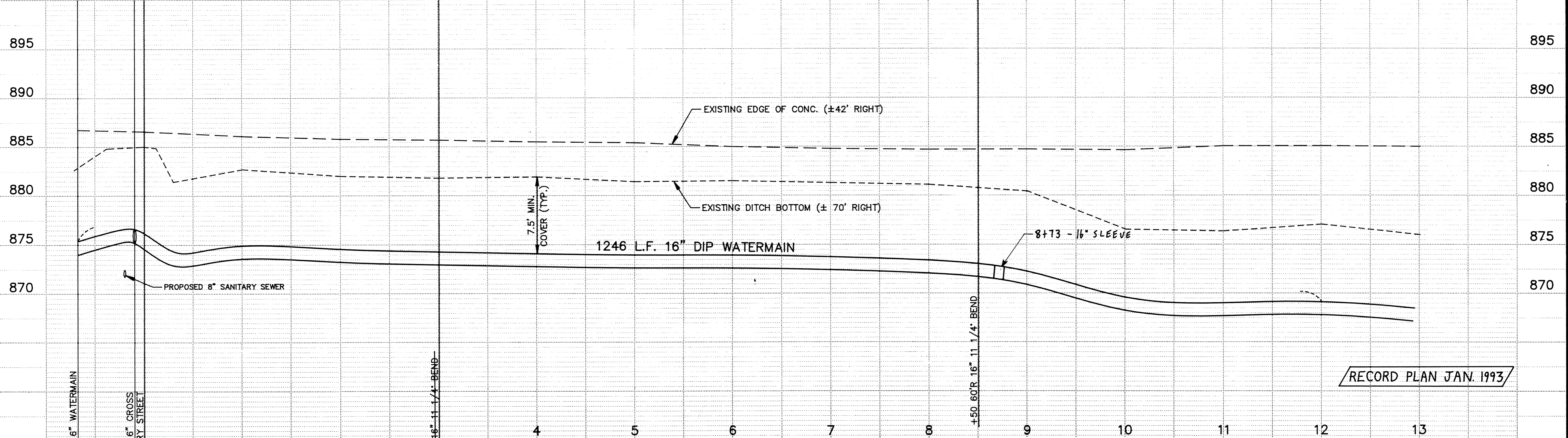
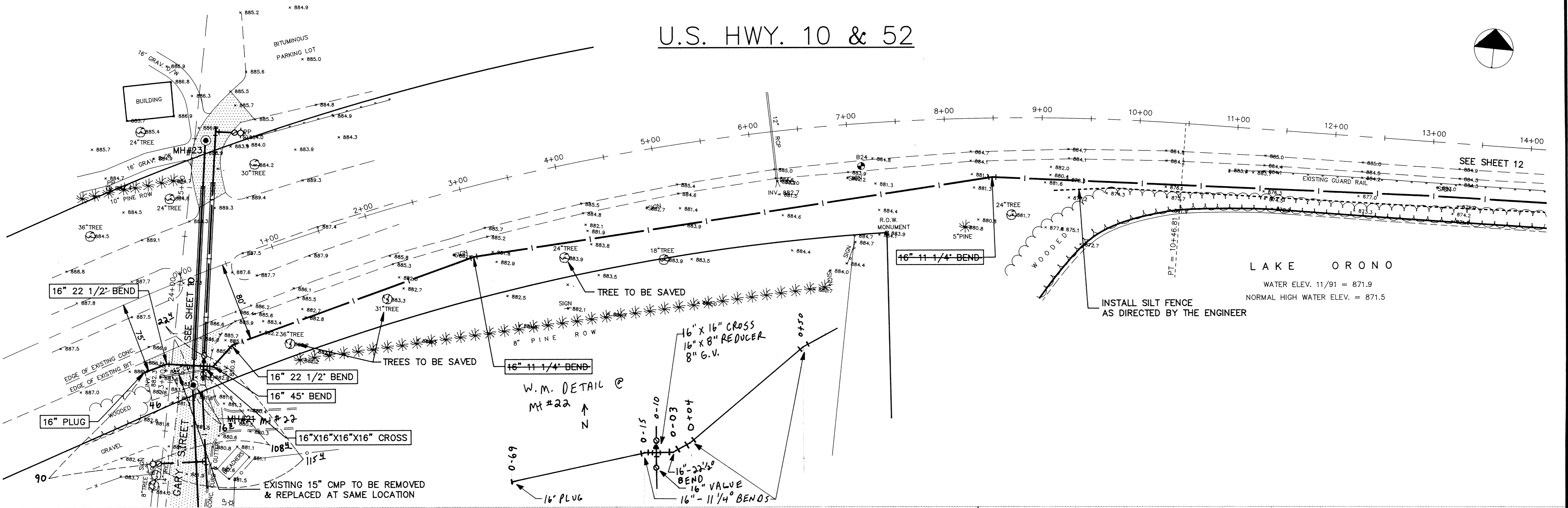
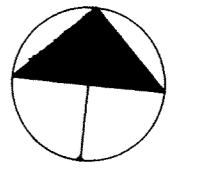


U.S. HWY. 10 & 52



RECORD PLAN JAN. 1993

I HEREBY CERTIFY THAT THIS PLAN, SPECIFICATION, OR REPORT WAS PREPARED BY ME OR UNDER MY DIRECT SUPERVISION AND THAT I AM A DULY REGISTERED PROFESSIONAL ENGINEER UNDER THE LAWS OF THE STATE OF MINNESOTA.

K.R. Roasly
 DATE 3/19/92 REG. NO. 20389

Maier Stewart & Associates Inc.
 CONSULTING ENGINEERS
 9800 SHELARD PARKWAY (612) 546-0432 MINNEAPOLIS, MINNESOTA 55441
 1959 SLOAN PLACE (612) 774-6021 ST. PAUL, MINNESOTA 55117

DATE	DESCRIPTION	DESIGNED	CHECKED	DRAWN
		KRR	PBB	CC

GRAPHIC SCALE
 HORIZ. 50'
 VERT. 5'

CITY OF ELK RIVER S.A.P. 204-113-06		
SEWER & WATERMAIN CONSTRUCTION U.S. HWY. 10 & 52		
DATE DEC. 1991	SHEET 11 OF 36 SHEETS	PROJECT NO. 230-131