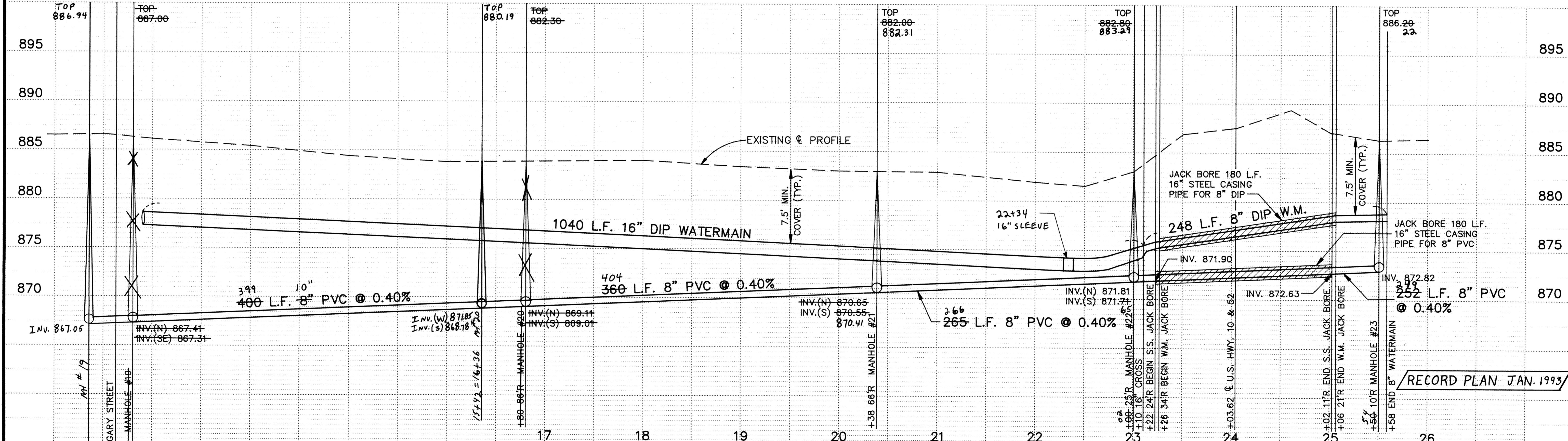
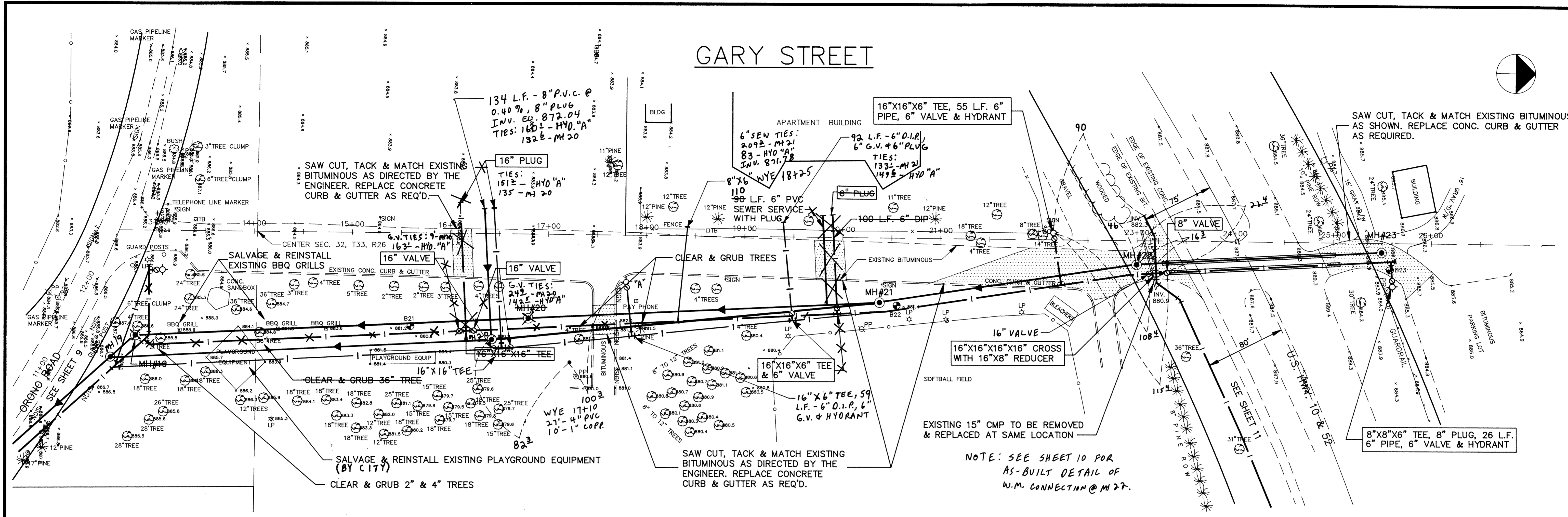
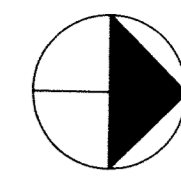


GARY STREET



I HEREBY CERTIFY THAT THIS PLAN, SPECIFICATION, OR REPORT WAS PREPARED BY ME OR UNDER MY DIRECT SUPERVISION AND THAT I AM A DULY REGISTERED PROFESSIONAL ENGINEER UNDER THE LAWS OF THE STATE OF MINNESOTA.

K.R. Rosell

DATE 3/19/92 REG NO 20389

WMA CONSULTING ENGINEERS

Maier Stewart & Associates Inc.

9800 SHELARD PARKWAY (612) 546-0432 MINNEAPOLIS, MINNESOTA 55441
 1959 SLOAN PLACE (612) 774-6021 ST. PAUL, MINNESOTA 55117

DATE	DESCRIPTION	DESIGNED_KRR
		CHECKED_PEB
		DRAWN_GC
GRAPHIC SCALE		
HORIZ 50		
VERT 5		

CITY OF ELK RIVER	
S.A.P. 204-113-06	
SANITARY SEWER & WATERMAIN CONSTRUCTION	
ORONO ROAD/GARY STREET	
DATE DEC. 1991	SHEET 10 OF 36 SHEETS PROJECT NO. 230-131

SACD PRODUCTS - NEW HOPE, MINNESOTA
 SACD PRODUCTS - NEW HOPE, MINNESOTA
 SACD PRODUCTS - NEW HOPE, MINNESOTA
 SACD PRODUCTS - NEW HOPE, MINNESOTA