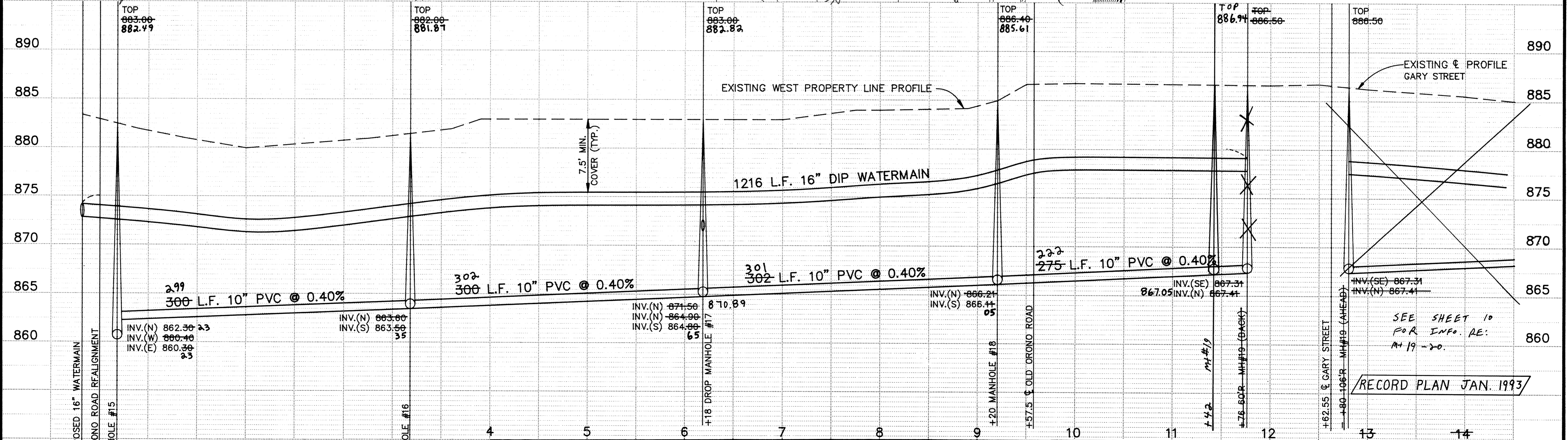
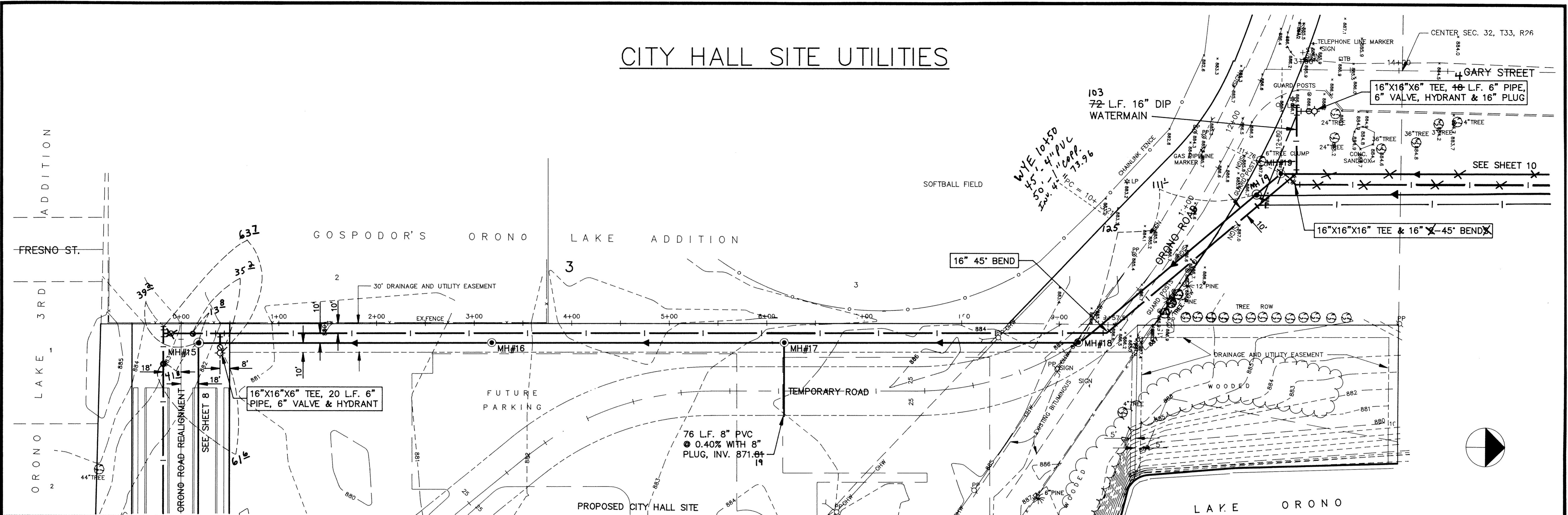


CITY HALL SITE UTILITIES



I HEREBY CERTIFY THAT THIS PLAN, SPECIFICATION, OR REPORT WAS PREPARED BY ME OR UNDER MY DIRECT SUPERVISION AND THAT I AM A DULY REGISTERED PROFESSIONAL ENGINEER UNDER THE LAWS OF THE STATE OF MINNESOTA.

K.R. Russell
 DATE 3/19/92 REG. NO. 20389

Maier Stewart & Associates Inc.
 CONSULTING ENGINEERS
 9800 SHELARD PARKWAY (612) 546-0432 MINNEAPOLIS, MINNESOTA 55441
 1959 SLOAN PLACE (612) 774-6021 ST. PAUL, MINNESOTA 55117

DATE	DESCRIPTION	DESIGNED	CHECKED	DRAWN
		KRZ	PEB	GG

GRAPHIC SCALE
 0 HORIZ. 50
 0 VERT. 5

CITY OF ELK RIVER
 S.A.P. 204-113-06
 SANITARY SEWER & WATERMAIN
 CITY HALL SITE

DATE DEC. 1991 SHEET 9 OF 36 SHEETS PROJECT NO. 230-131

DRAWING NUMBER WESTE 92

DRAWING NUMBER 9

DRAWING NUMBER WESTE 92

DRAWING NUMBER 9