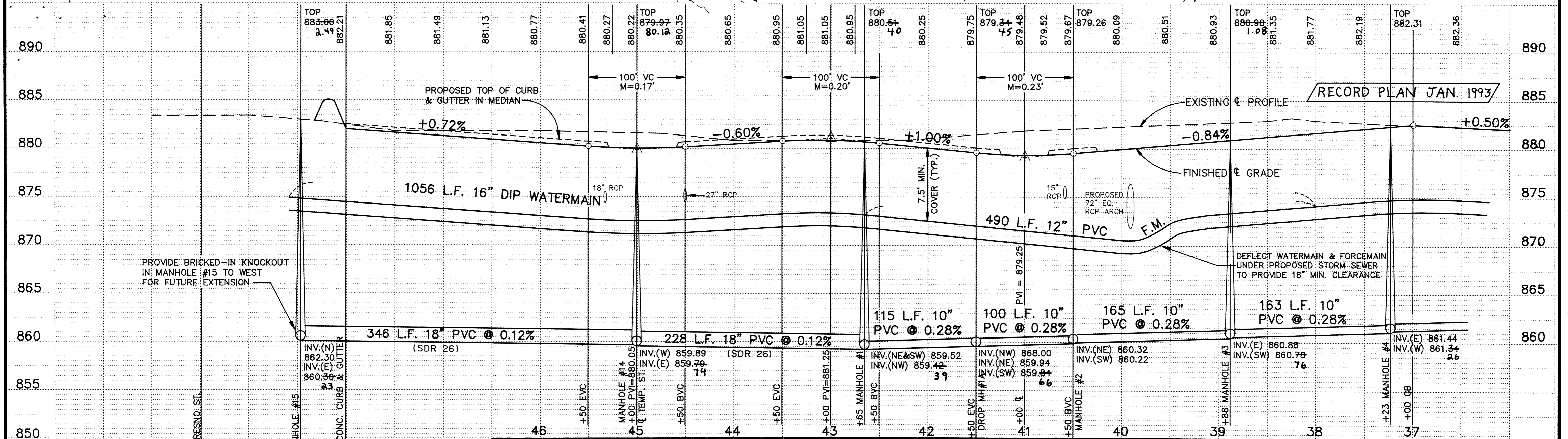
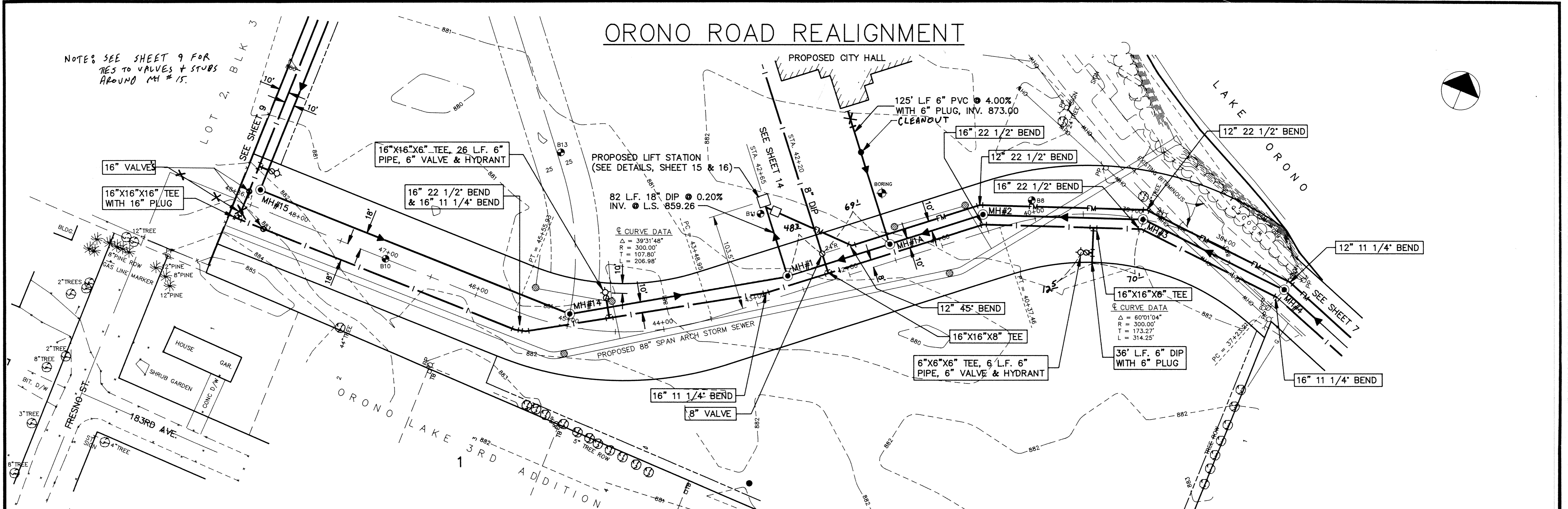


ORONO ROAD REALIGNMENT



STATION	PROPOSED TOP OF CURB & GUTTER IN MEDIAN	EXISTING PROFILE	FINISHED GRADE
890	885.86	885.86	885.86
885	882.21	882.21	882.21
880	881.85	881.85	881.85
875	881.49	881.49	881.49
870	881.13	881.13	881.13
865	880.77	880.77	880.77
860	880.41	880.41	880.41
855	880.27	880.27	880.27
850	880.22	880.22	880.22
	880.15	880.15	880.15
	880.05	880.05	880.05
	880.95	880.95	880.95
	880.25	880.25	880.25
	879.75	879.75	879.75
	879.34	879.34	879.34
	879.48	879.48	879.48
	879.52	879.52	879.52
	879.67	879.67	879.67
	879.26	879.26	879.26
	880.09	880.09	880.09
	880.51	880.51	880.51
	880.93	880.93	880.93
	880.98	880.98	880.98
	881.35	881.35	881.35
	881.77	881.77	881.77
	882.19	882.19	882.19
	882.31	882.31	882.31
	882.36	882.36	882.36

I HEREBY CERTIFY THAT THIS PLAN, SPECIFICATION, OR REPORT WAS PREPARED BY ME OR UNDER MY DIRECT SUPERVISION AND THAT I AM A DULY REGISTERED PROFESSIONAL ENGINEER UNDER THE LAWS OF THE STATE OF MINNESOTA.

K.R. Rosaly
 DATE 3/19/92 REG. NO. 20389

Maier Stewart & Associates Inc.
 CONSULTING ENGINEERS
 9800 SHELARD PARKWAY (612) 546-0432 MINNEAPOLIS, MINNESOTA 55441
 1959 SLOAN PLACE (612) 774-6021 ST. PAUL, MINNESOTA 55117

DATE	DESCRIPTION	DESIGNED	CHECKED	DRAWN
		KRR	PER	GC

GRAPHIC SCALE
 HORIZ. 50'
 VERT. 5'

CITY OF ELK RIVER
 S.A.P. 204-113-06
SANITARY SEWER & WATERMAIN CONSTRUCTION
ORONO ROAD REALIGNMENT

DATE DEC. 1991 SHEET 8 OF 36 SHEETS PROJECT NO. 230-131