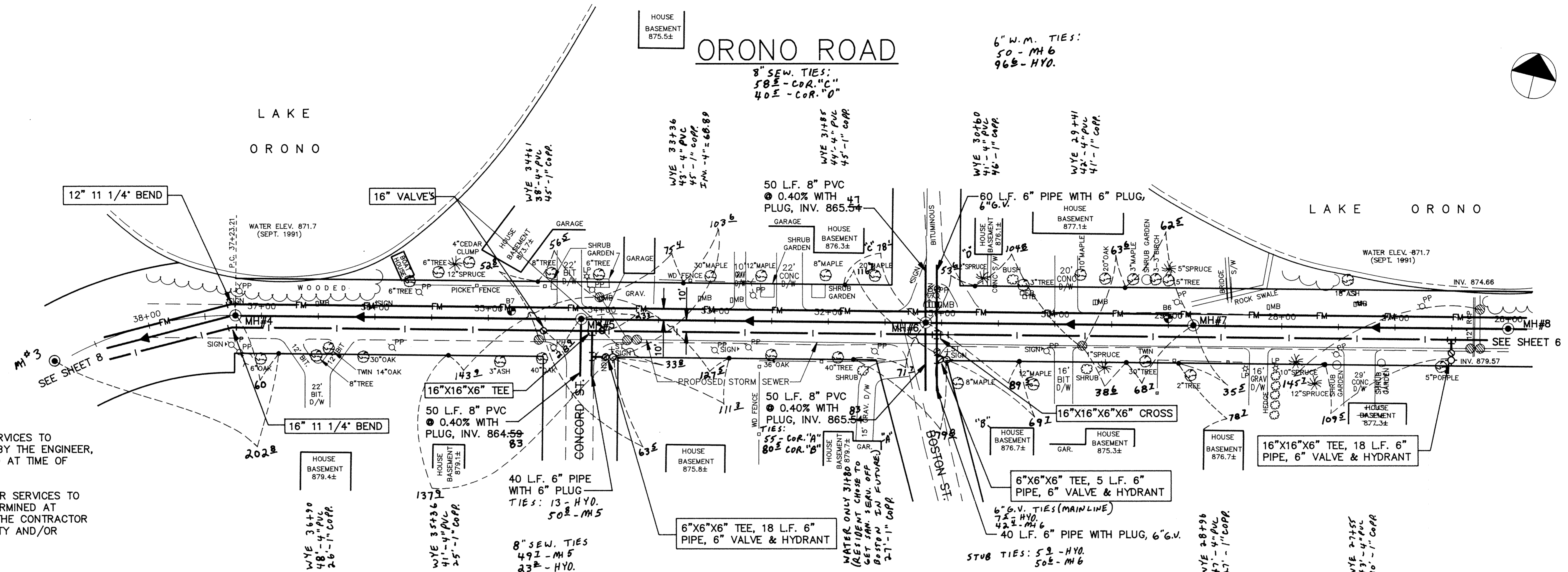
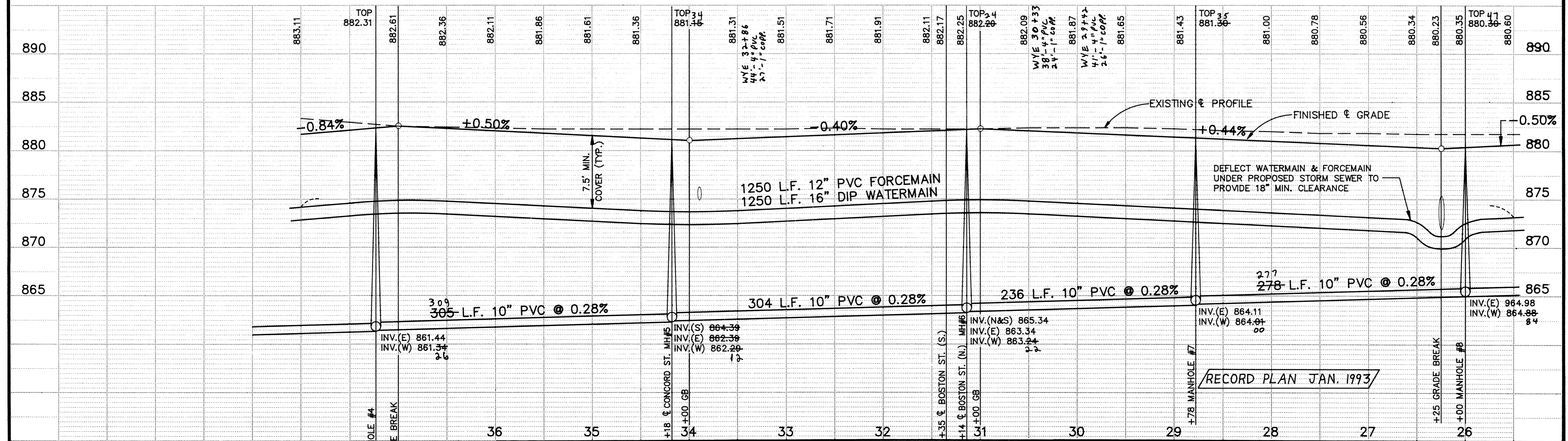


ORONO ROAD



- NOTES:**
1. INSTALL SEWER & WATER SERVICES TO VACANT LOTS AS DIRECTED BY THE ENGINEER. LOCATION TO BE DETERMINED AT TIME OF CONSTRUCTION.
 2. LOCATION OF SEWER & WATER SERVICES TO EXISTING HOMES TO BE DETERMINED AT TIME OF CONSTRUCTION BY THE CONTRACTOR WITH ASSISTANCE BY THE CITY AND/OR MUNICIPAL UTILITIES.



I HEREBY CERTIFY THAT THIS PLAN, SPECIFICATION, OR REPORT WAS PREPARED BY ME OR UNDER MY DIRECT SUPERVISION AND THAT I AM A DULY REGISTERED PROFESSIONAL ENGINEER UNDER THE LAWS OF THE STATE OF MINNESOTA.

KRR

DATE 3/19/92 REG. NO. 20389

Maier Stewart & Associates Inc.
CONSULTING ENGINEERS

9800 SHELARD PARKWAY (612) 546-0432 MINNEAPOLIS, MINNESOTA 55441
1959 SLOAN PLACE (612) 774-6021 ST. PAUL, MINNESOTA 55117

DATE	DESCRIPTION	DESIGNED	CHECKED	PER.
		KRR		
			CG	

GRAPHIC SCALE
 0' HORIZ. 50'
 0' VERT. 5'

CITY OF ELK RIVER
S.A.P. 204-113-06
SANITARY SEWER & WATERMAIN CONSTRUCTION
ORONO ROAD

DATE DEC. 1991 SHEET 7 OF 36 SHEETS PROJECT NO. 230-131