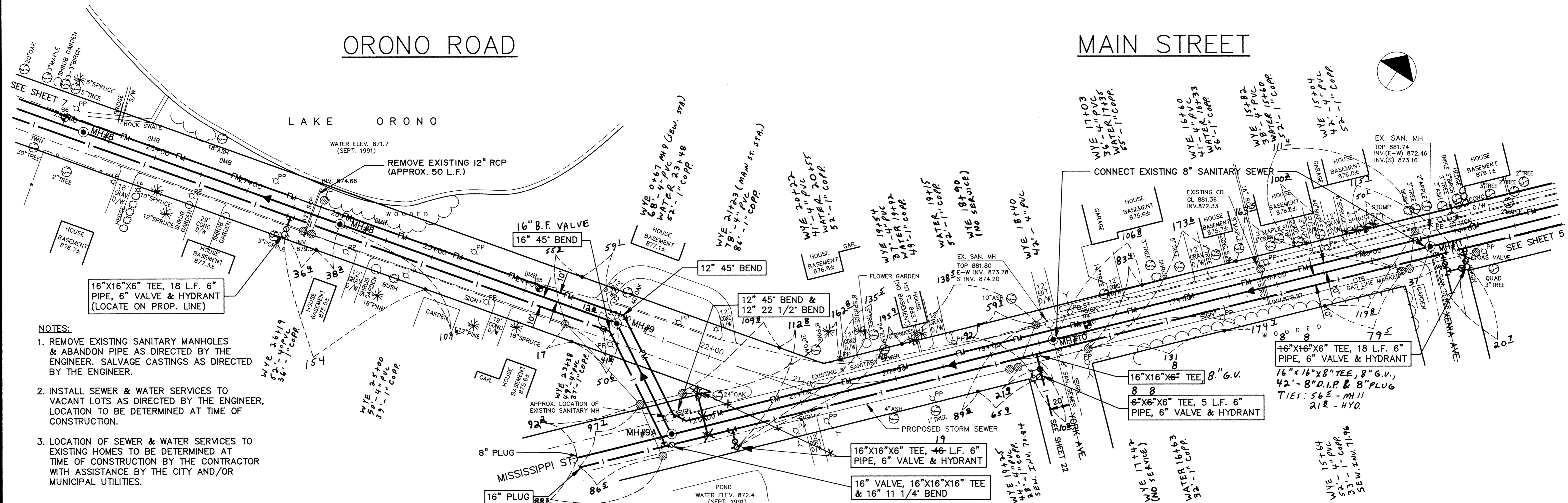
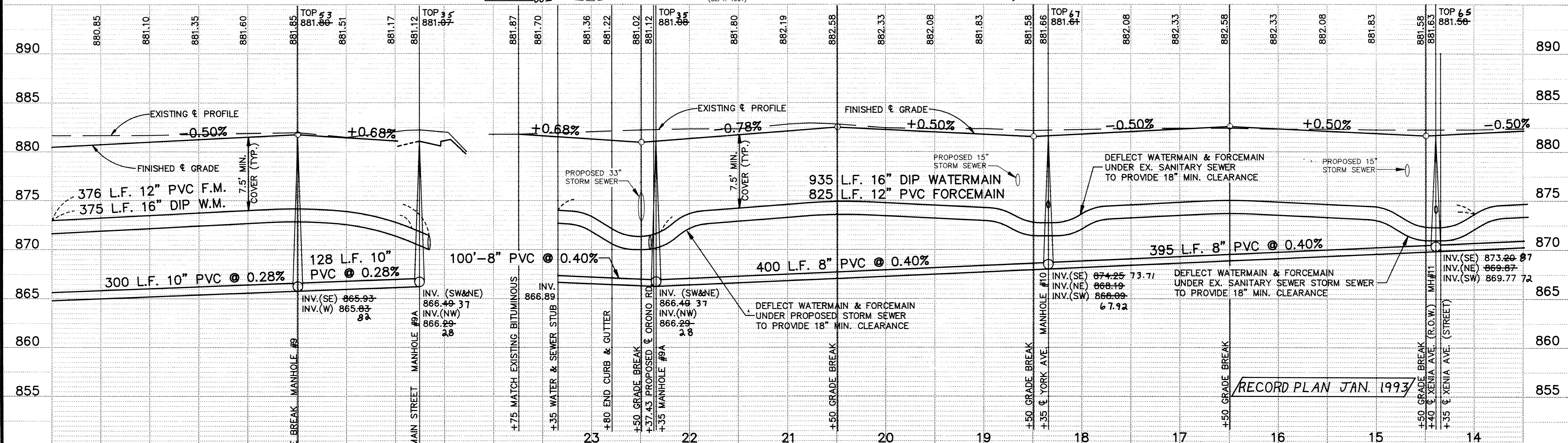


ORONO ROAD

MAIN STREET



- NOTES:**
- REMOVE EXISTING SANITARY MANHOLES & ABANDON PIPE AS DIRECTED BY THE ENGINEER. SALVAGE CASTINGS AS DIRECTED BY THE ENGINEER.
 - INSTALL SEWER & WATER SERVICES TO VACANT LOTS AS DIRECTED BY THE ENGINEER. LOCATION TO BE DETERMINED AT TIME OF CONSTRUCTION.
 - LOCATION OF SEWER & WATER SERVICES TO EXISTING HOMES TO BE DETERMINED AT TIME OF CONSTRUCTION BY THE CONTRACTOR WITH ASSISTANCE BY THE CITY AND/OR MUNICIPAL UTILITIES.



I HEREBY CERTIFY THAT THIS PLAN, SPECIFICATION, OR REPORT WAS PREPARED BY ME OR UNDER MY DIRECT SUPERVISION AND THAT I AM A DULY REGISTERED PROFESSIONAL ENGINEER UNDER THE LAWS OF THE STATE OF MINNESOTA.

KRR

DATE 3/19/92 REG. NO. 20389

Maier Stewart & Associates Inc.
CONSULTING ENGINEERS

9800 SHELARD PARKWAY (612) 546-0432 MINNEAPOLIS, MINNESOTA 55441
1959 SLOAN PLACE (612) 774-6021 ST. PAUL, MINNESOTA 55117

DATE	DESCRIPTION	DESIGNED	CHECKED
		KRR	PER
			GG

GRAPHIC SCALE
HORIZ. 50'
VERT. 5'

CITY OF ELK RIVER
S.A.P. 204-113-06

SANITARY SEWER & WATERMAIN CONSTRUCTION
ORONO ROAD / MAIN STREET

DATE NOV. 1991 SHEET 6 OF 36 SHEETS PROJECT NO. 230-131

DRAWING NUMBER WESTE 92 6

DRAWING NUMBER

DRAWING NUMBER

DRAWING NUMBER