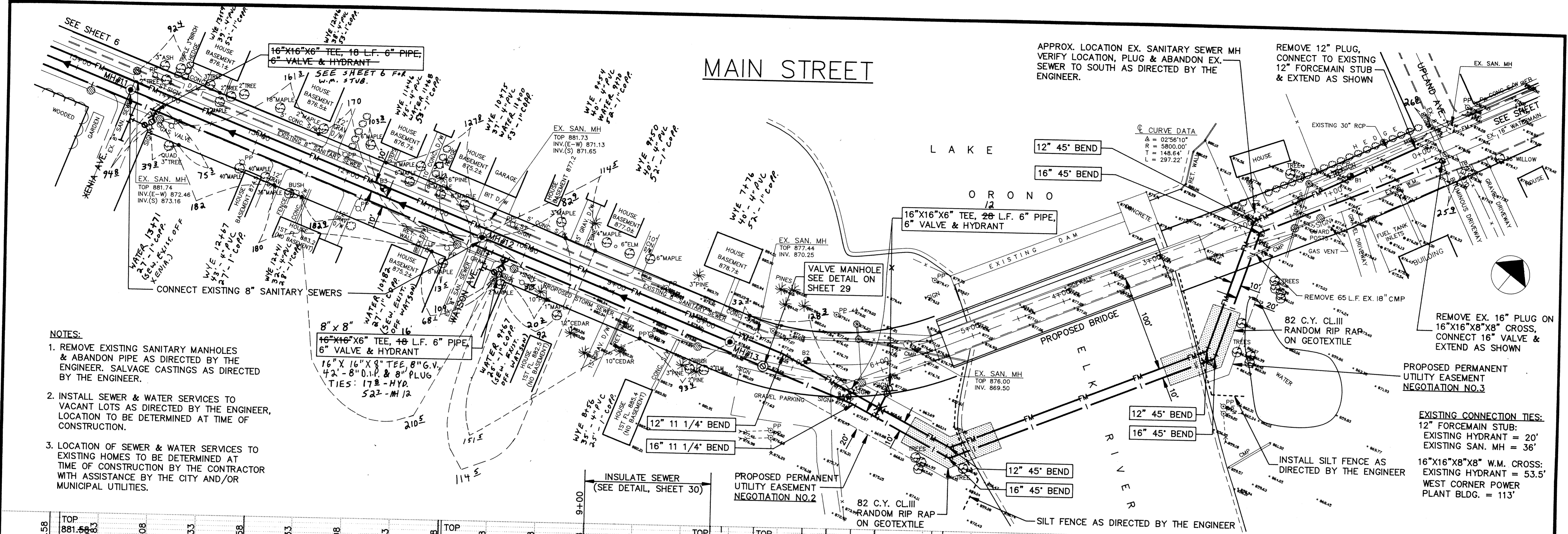
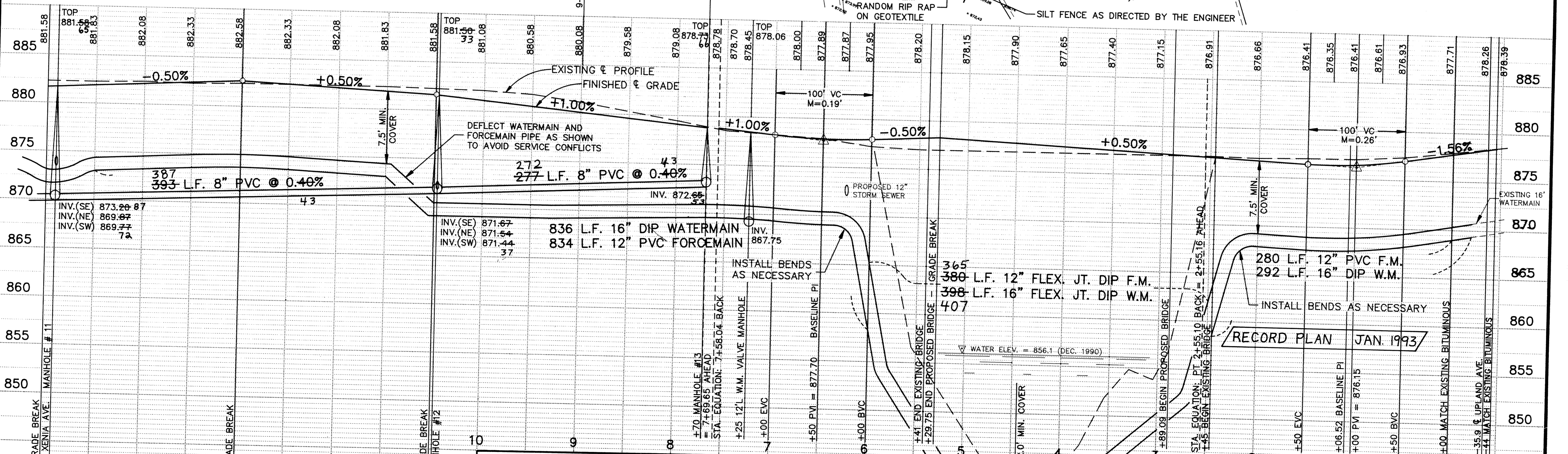


# MAIN STREET



- NOTES:**
1. REMOVE EXISTING SANITARY MANHOLES & ABANDON PIPE AS DIRECTED BY THE ENGINEER. SALVAGE CASTINGS AS DIRECTED BY THE ENGINEER.
  2. INSTALL SEWER & WATER SERVICES TO VACANT LOTS AS DIRECTED BY THE ENGINEER. LOCATION TO BE DETERMINED AT TIME OF CONSTRUCTION.
  3. LOCATION OF SEWER & WATER SERVICES TO EXISTING HOMES TO BE DETERMINED AT TIME OF CONSTRUCTION BY THE CONTRACTOR WITH ASSISTANCE BY THE CITY AND/OR MUNICIPAL UTILITIES.



I HEREBY CERTIFY THAT THIS PLAN, SPECIFICATION, OR REPORT WAS PREPARED BY ME OR UNDER MY DIRECT SUPERVISION AND THAT I AM A DULY REGISTERED PROFESSIONAL ENGINEER UNDER THE LAWS OF THE STATE OF MINNESOTA.

*K.R. Ross*  
 DATE 3/19/92 REG. NO. 20389

**Maier Stewart & Associates Inc.**  
 CONSULTING ENGINEERS  
 9800 SHELARD PARKWAY (612) 546-0432 MINNEAPOLIS, MINNESOTA 55441  
 1959 SLOAN PLACE (612) 774-6021 ST. PAUL, MINNESOTA 55117

NO.	DATE	DESCRIPTION	DESIGNED	CHECKED	DRAWN
1			KRR	PEB	CC
GRAPHIC SCALE			HORIZ. 50		
VERT. 5					

**CITY OF ELK RIVER**  
 S.A.P. 204-113-06  
**SANITARY SEWER & WATERMAIN CONSTRUCTION**  
**MAIN STREET**

DATE OCT. 1991 SHEET 5 OF 36 SHEETS PROJECT NO. 230-131

SACO PRODUCTS - NEW HOPKINS, MINNESOTA  
 REPRODUCED BY PLAN NUMBER 6533  
 PROVISIONAL COPY OF PLAN NUMBER 6533  
 SACO PRODUCTS - NEW HOPKINS, MINNESOTA  
 REPRODUCED BY PLAN NUMBER 6533  
 PROVISIONAL COPY OF PLAN NUMBER 6533  
 SACO PRODUCTS - NEW HOPKINS, MINNESOTA  
 REPRODUCED BY PLAN NUMBER 6533  
 PROVISIONAL COPY OF PLAN NUMBER 6533