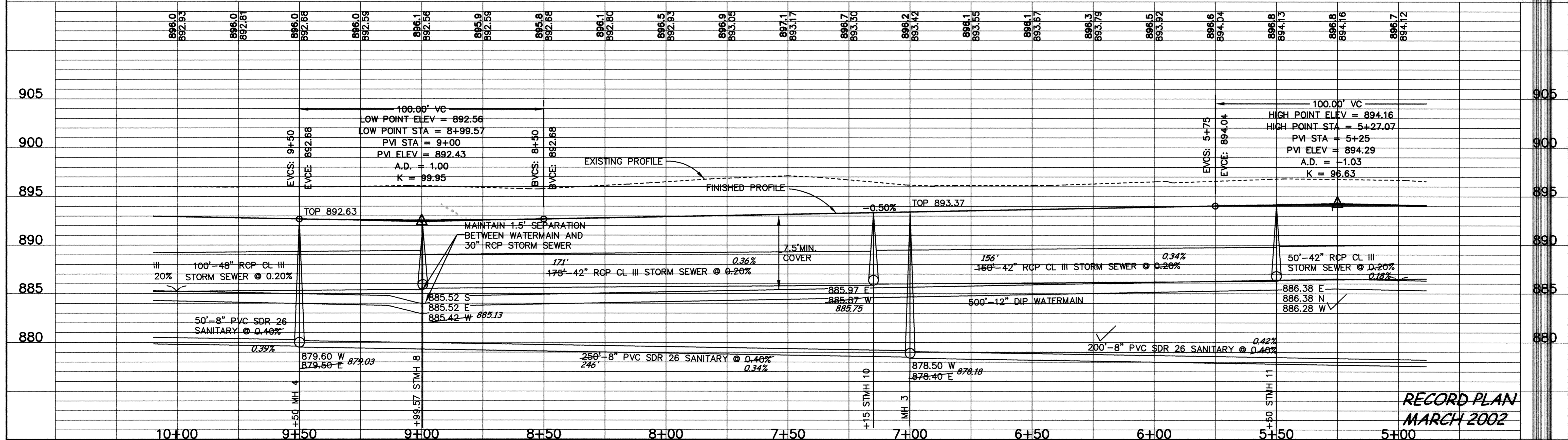
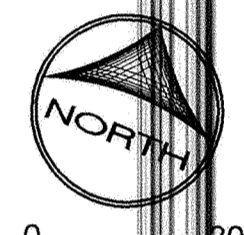
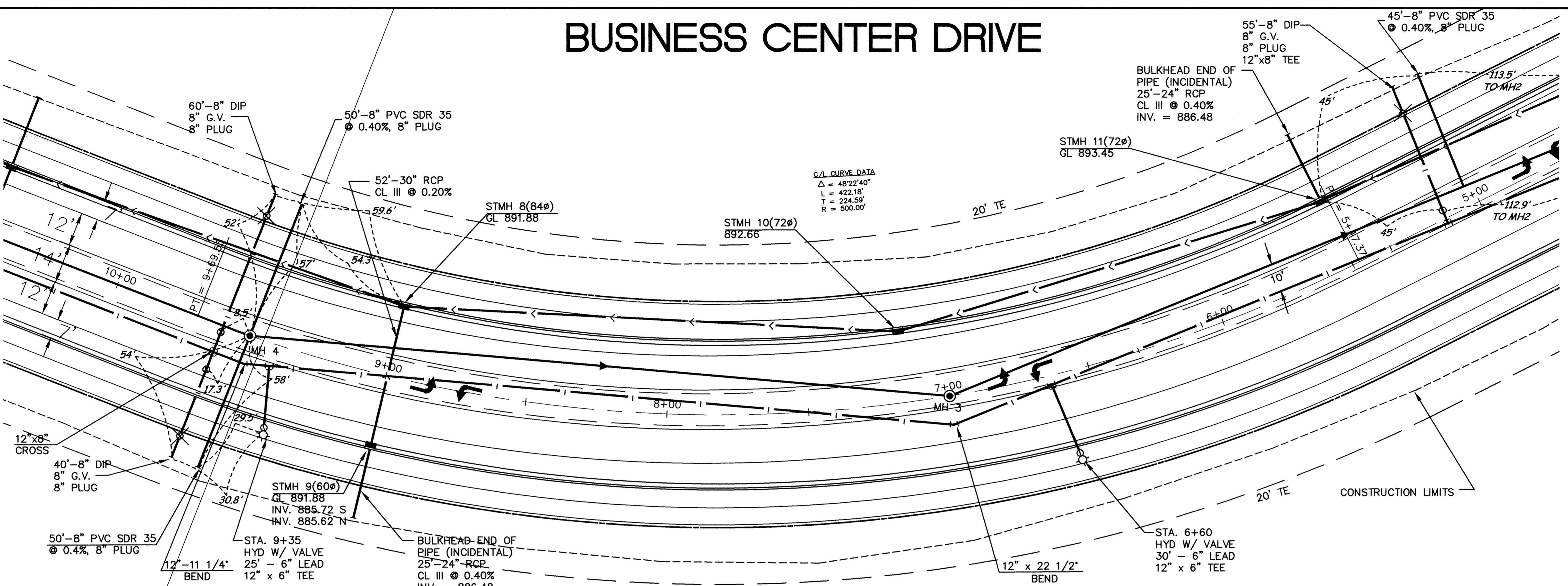


BUSINESS CENTER DRIVE

SEE SHEET 19

SEE SHEET 17

C/L CURVE DATA
 $\Delta = 48^{\circ}22'40"$
 $L = 422.18'$
 $T = 224.59'$
 $R = 500.00'$



RECORD PLAN
MARCH 2002

DESIGNED BY: JMA DRAWN BY: RKM
 APPROVED BY: TJM JOB NUMBER 807650
 CAD DATE: April 23, 2002 10:51:07 a.m.
 CAD FILE: 807650\807650-2.DWG (ASBUILT)

I HEREBY CERTIFY THAT THIS PLAN, SPECIFICATION, OR REPORT WAS PREPARED BY ME OR UNDER MY DIRECT SUPERVISION AND THAT I AM A DULY REGISTERED PROFESSIONAL ENGINEER UNDER THE LAWS OF THE STATE OF MINNESOTA.
 DATE: _____ REG. NO. 15316

NO.	DATE	BY	REVISION DESCRIPTION

1326 ENERGY PARK DRIVE
 ST. PAUL, MINNESOTA 55108
 (651) 644-4389

Howard R. Green Company
 CONSULTING ENGINEERS

CITY OF ELK RIVER
WESTERN AREA PHASE IV
STREET AND UTILITY IMPROVEMENTS

PLAN AND PROFILE
BUSINESS CENTER DRIVE
 S.A.P. 204-131-02, 204-126-03, S.P. 7102-99 5+00 TO 10+00

SHEET NO.
18

DRAWING NUMBER
 WESTE4.00
 7 (187)