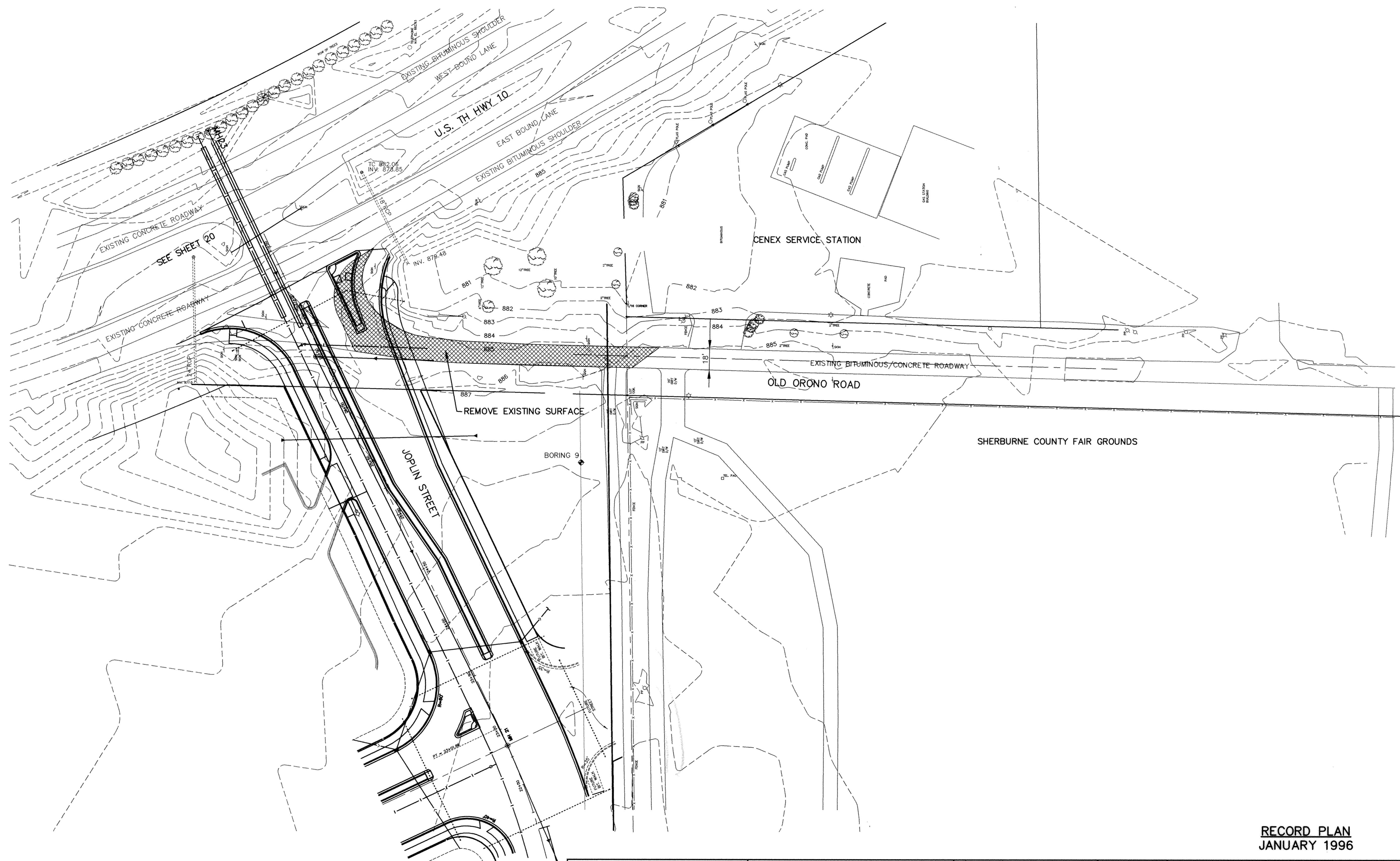
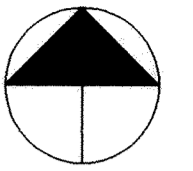


ORONO ROAD/JOPLIN STREET



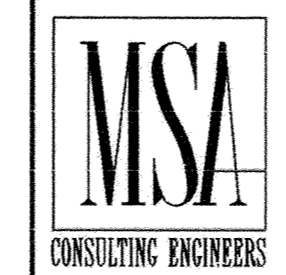
SEE SHEET 20

SEE SHEET 19

RECORD PLAN
JANUARY 1996

CITY OF ELK RIVER
STREET REALIGNMENT
ORONO ROAD/JOPLIN STREET

I HEREBY CERTIFY THAT THIS PLAN, SPECIFICATION, OR REPORT WAS PREPARED BY ME OR UNDER MY DIRECT SUPERVISION AND THAT I AM A DULY REGISTERED PROFESSIONAL ENGINEER UNDER THE LAWS OF THE STATE OF MINNESOTA.
Mark V. Graham
DATE 9/21/94 REG. NO. 19130



1326 ENERGY PARK DRIVE
ST. PAUL, MINNESOTA 55108
(612) 644-4389

9800 SHELARD PARKWAY
MINNEAPOLIS, MINNESOTA 55441
(612) 546-0432

REVISIONS	DATE	DESCRIPTION	DESIGNED LCS	CHECKED	DRAWN LCS
	9-15-94	ADDED CUL-DE-SAC AT WEST END OF OLD ORONO ROAD			
	4-14-95	CHANGE ORDER NO. 2			

GRAPHIC SCALE
0 40
0 VERT. 5

DATE AUG. 1994 SHEET 21 OF 63 SHEETS PROJECT NO. 230-223