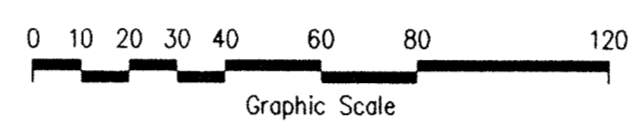


ORONO ROAD LIGHTING PLAN
SCALE: 1"=40'-0"

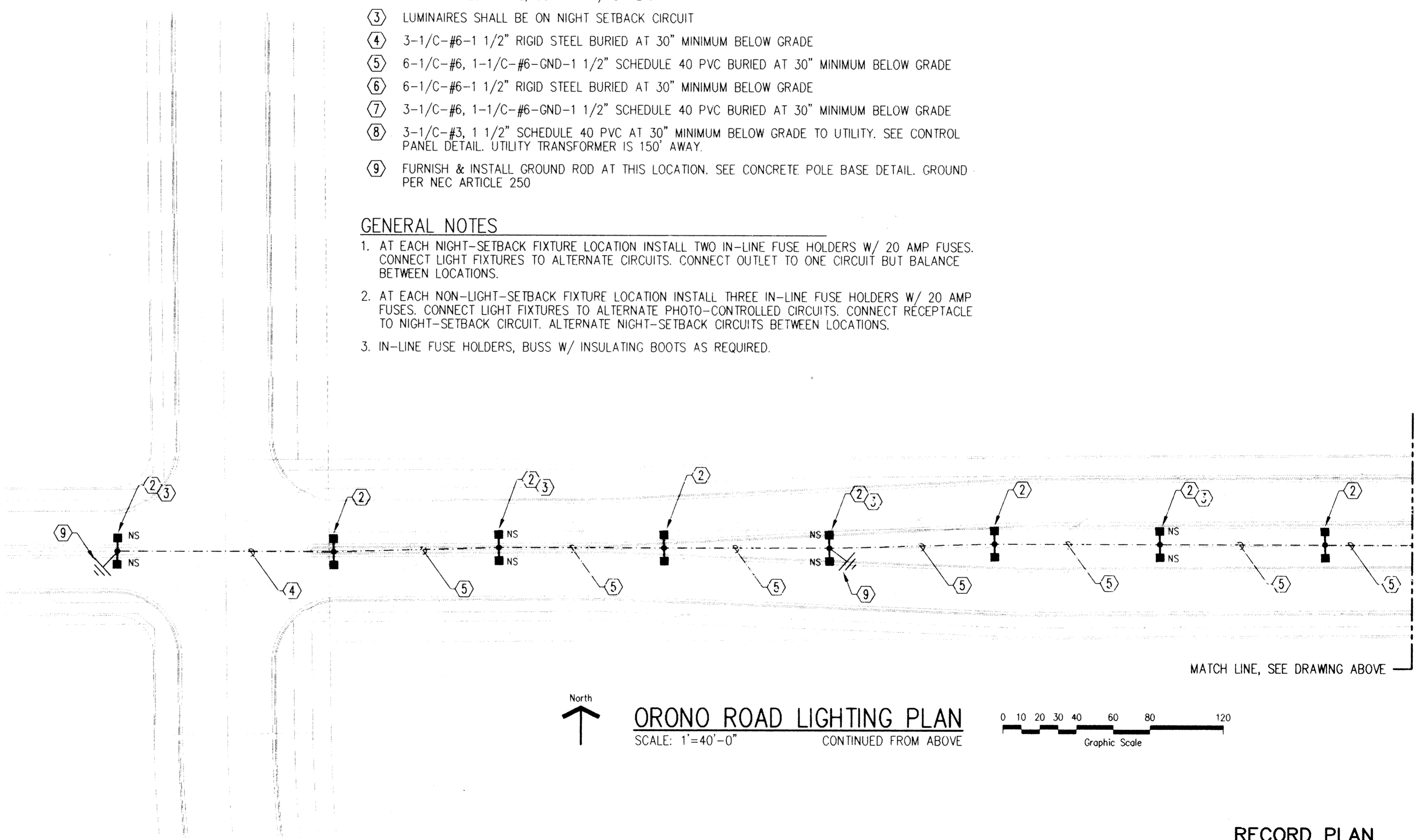


NUMBERED NOTES

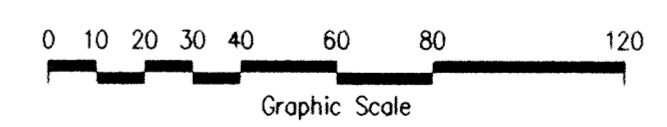
- ① CONTROL PANEL. COORDINATE EXACT LOCATION W/ CITY & ELECTRIC UTILITY PERSONNEL. SEE DETAIL.
- ② FURNISH & INSTALL STERNBERG #3612T, OR EQUAL, 12' POLE. POLE SHALL INCLUDE POLE TOP CAP, TWO 3" DIAMETER x 3 1/2" TENON, TWO STERNBERG #80, OR EQUAL, MOUNTING BRACKETS AT 11'-0" & ONE DUPLEX FESTOON RECEPTACLE MOUNTED AT 11'-0". ALSO FURNISH & INSTALL TWO MCGRAW-EDISON #UTR-10-S-P-2-22-E-BLACK, OR EQUAL, 120V, HPS, TENON MOUNTED FIXTURES W/ REMOTE BALLASTS & 2-100W-E23-CLEAR LAMPS. COORDINATE FIXTURE & POLE REQUIREMENTS. POLE FINISH TO MATCH LUMINAIRE, CONFIRM W/ OWNER.
- ③ LUMINAIRES SHALL BE ON NIGHT SETBACK CIRCUIT
- ④ 3-1/C-#6-1 1/2" RIGID STEEL BURIED AT 30" MINIMUM BELOW GRADE
- ⑤ 6-1/C-#6, 1-1/C-#6-GND-1 1/2" SCHEDULE 40 PVC BURIED AT 30" MINIMUM BELOW GRADE
- ⑥ 6-1/C-#6-1 1/2" RIGID STEEL BURIED AT 30" MINIMUM BELOW GRADE
- ⑦ 3-1/C-#6, 1-1/C-#6-GND-1 1/2" SCHEDULE 40 PVC BURIED AT 30" MINIMUM BELOW GRADE
- ⑧ 3-1/C-#3, 1 1/2" SCHEDULE 40 PVC AT 30" MINIMUM BELOW GRADE TO UTILITY. SEE CONTROL PANEL DETAIL. UTILITY TRANSFORMER IS 150' AWAY.
- ⑨ FURNISH & INSTALL GROUND ROD AT THIS LOCATION. SEE CONCRETE POLE BASE DETAIL. GROUND PER NEC ARTICLE 250

GENERAL NOTES

- 1. AT EACH NIGHT-SETBACK FIXTURE LOCATION INSTALL TWO IN-LINE FUSE HOLDERS W/ 20 AMP FUSES. CONNECT LIGHT FIXTURES TO ALTERNATE CIRCUITS. CONNECT OUTLET TO ONE CIRCUIT BUT BALANCE BETWEEN LOCATIONS.
- 2. AT EACH NON-LIGHT-SETBACK FIXTURE LOCATION INSTALL THREE IN-LINE FUSE HOLDERS W/ 20 AMP FUSES. CONNECT LIGHT FIXTURES TO ALTERNATE PHOTO-CONTROLLED CIRCUITS. CONNECT RECEPTACLE TO NIGHT-SETBACK CIRCUIT. ALTERNATE NIGHT-SETBACK CIRCUITS BETWEEN LOCATIONS.
- 3. IN-LINE FUSE HOLDERS, BUSS W/ INSULATING BOOTS AS REQUIRED.

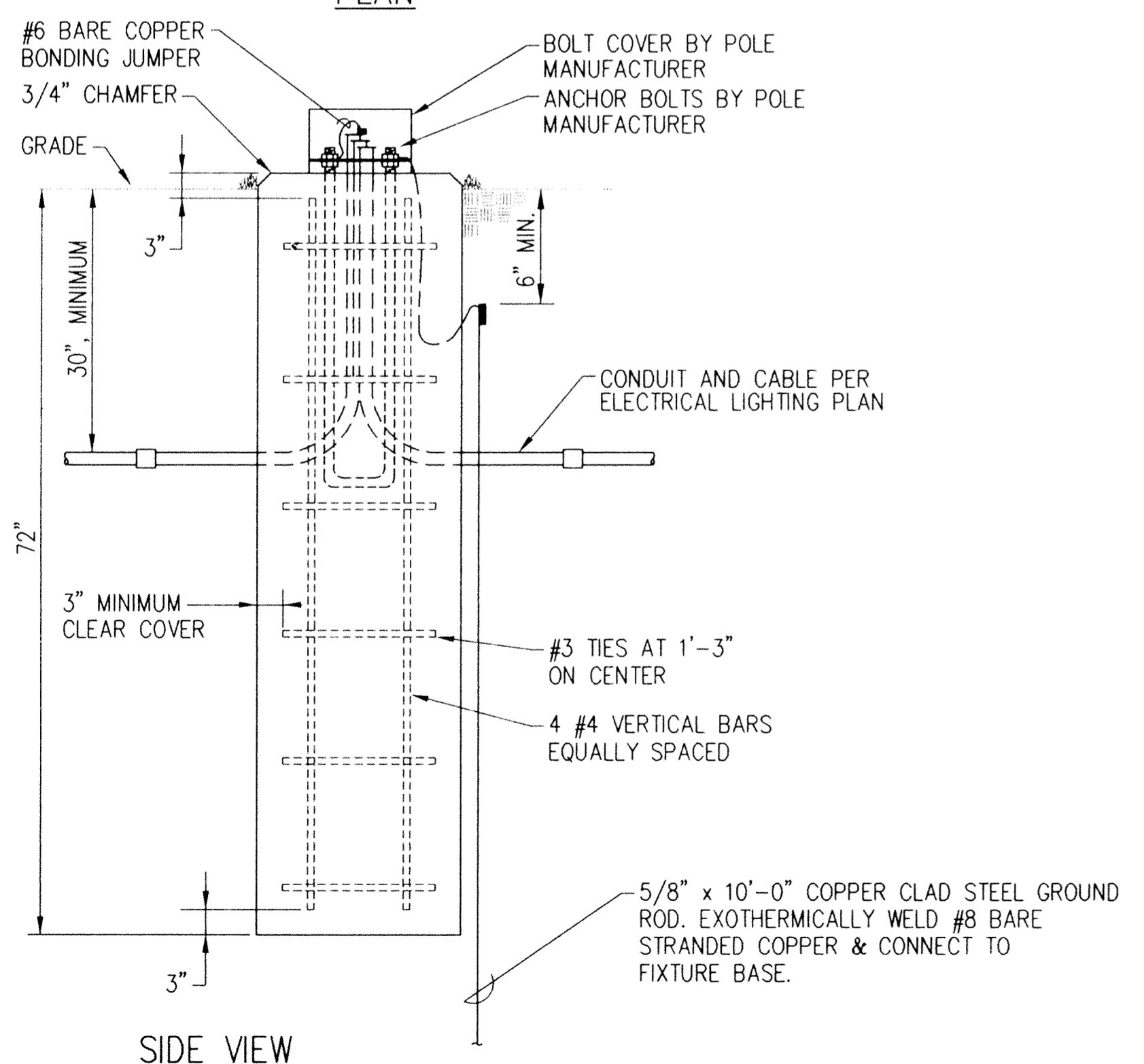
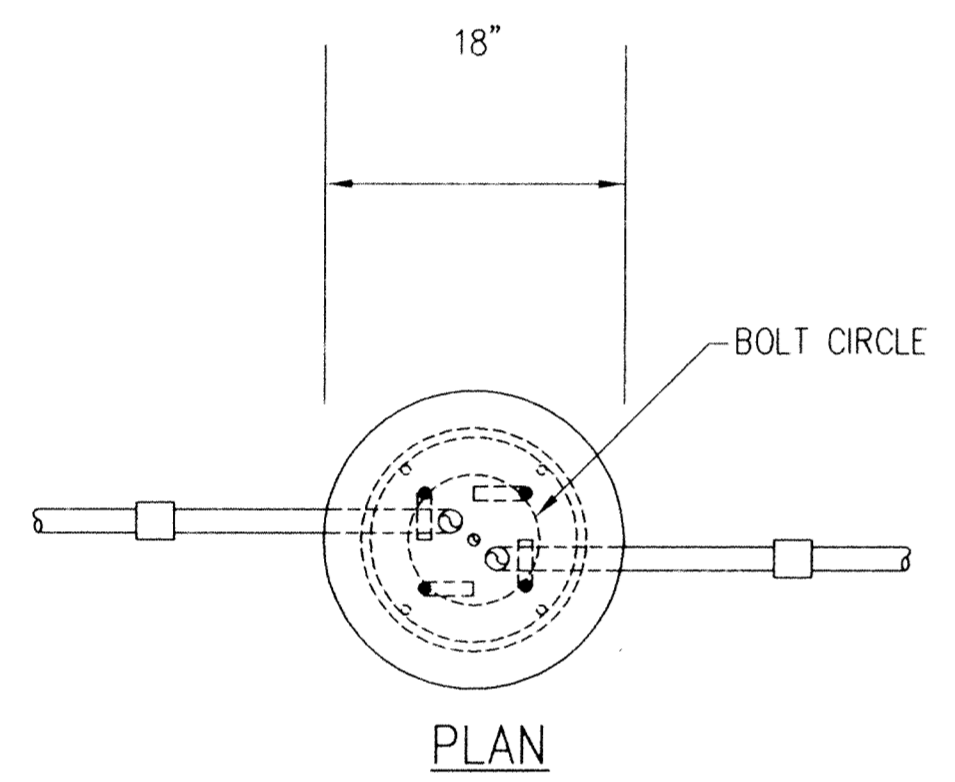


ORONO ROAD LIGHTING PLAN
SCALE: 1"=40'-0"



CONCRETE BASE NOTES

- 1. CONCRETE SHALL HAVE 6% AIR ENTRAINMENT AND A 28 DAY STRENGTH OF 4000 PSI.
- 2. REINFORCING STEEL SHALL BE ASTM A615, GRADE 60, NEW BILLET, INTERMEDIATE GRADE, DEFORMED W/ 60000 PSI YIELD STRENGTH.



CONCRETE POLE BASE DETAIL
NO SCALE

This drawing was prepared by:
Kaeding & Associates, Inc.
7300 France Avenue South
Suite 330
Minneapolis, MN 55435
Telephone: (612) 831-0317
Fax: (612) 831-2179

I HEREBY CERTIFY THAT THIS PLAN, SPECIFICATION, OR REPORT WAS PREPARED BY ME OR UNDER MY DIRECT SUPERVISION AND THAT I AM A DULY REGISTERED PROFESSIONAL ENGINEER UNDER THE LAWS OF THE STATE OF MINNESOTA.

[Signature]
DATE: 10 AUG 94 REG. NO.: 9955



1326 ENERGY PARK DRIVE
ST. PAUL, MINNESOTA 55108
(612) 644-4389

9800 SHELARD PARKWAY
MINNEAPOLIS, MINNESOTA 55441
(612) 546-0432

DATE	DESCRIPTION	DESIGNED	PFK
		CHECKED	PFK
		DRAWN	DTB
REVISIONS		GRAPHIC SCALE	
		0 HORIZ.	
		0 VERT.	

CITY OF ELK RIVER			
LIGHTING PLAN			
ORONO ROAD			
S.A.P. STA 47+98.41 TO STA 53+00			
DATE	AUG 1994	SHEET	56 OF 63 SHEETS
PROJECT NO.	230-223		