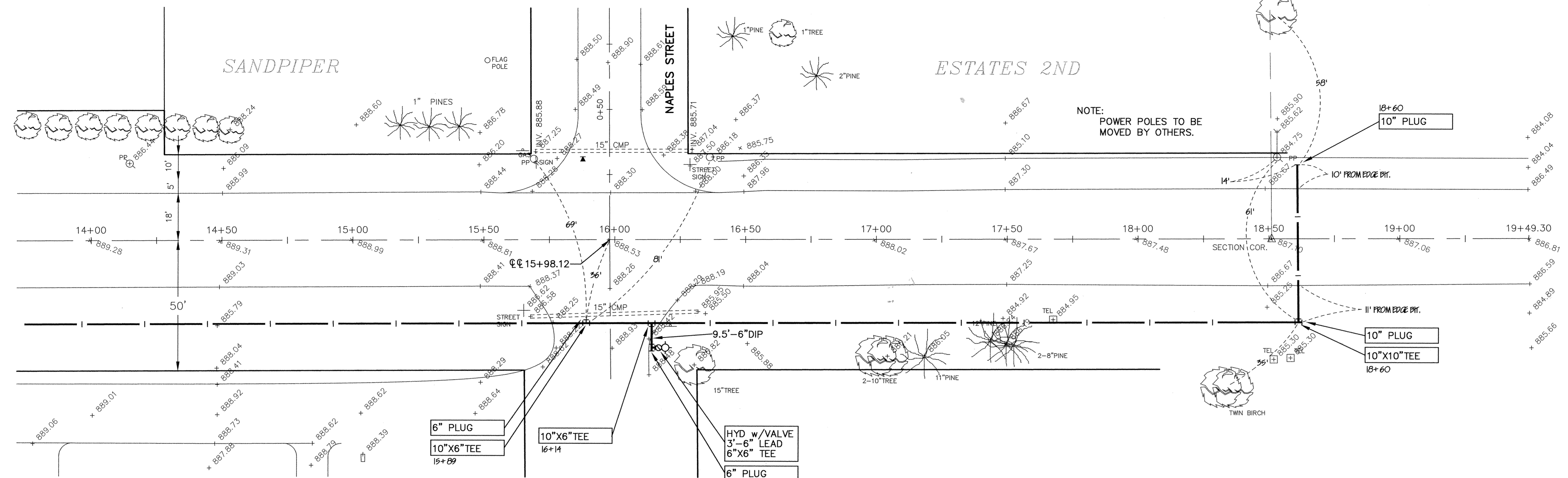
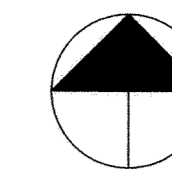
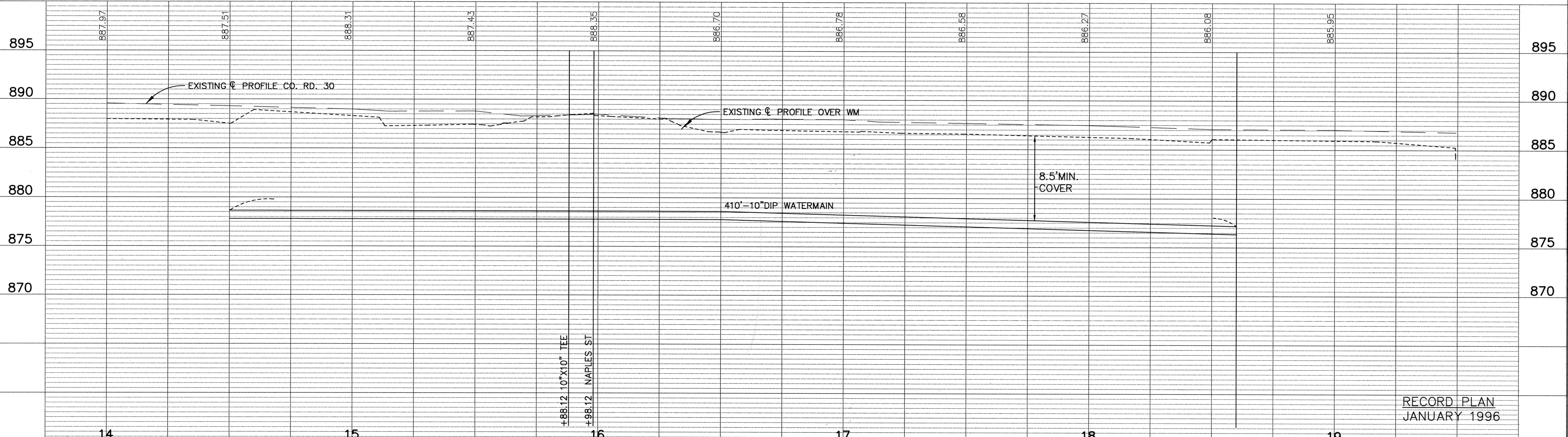


COUNTY ROAD 30



NOTE:
POWER POLES TO BE
MOVED BY OTHERS.



I HEREBY CERTIFY THAT THIS PLAN, SPECIFICATION, OR REPORT WAS PREPARED BY ME OR UNDER MY DIRECT SUPERVISION AND THAT I AM A DULY REGISTERED PROFESSIONAL ENGINEER UNDER THE LAWS OF THE STATE OF MINNESOTA.
Mark V. Graham
DATE 9/21/94 REG. NO. 19130



1326 ENERGY PARK DRIVE
ST. PAUL, MINNESOTA 55108
(612) 644-4389
9800 SHELARD PARKWAY
MINNEAPOLIS, MINNESOTA 55441
(612) 546-0432

REVISIONS	DATE	DESCRIPTION
1	9-15-94	CHANGE ORDER NO. 1

DESIGNED MJG
CHECKED LCS
DRAWN LCS
GRAPHIC SCALES
0 HOR. 20
0 VERT. 5

CITY OF ELK RIVER
WATERMAIN
COUNTY ROAD 30
14+50 TO 18+60
DATE SEPT. 1994 SHEET 63F OF 63 SHEETS PROJECT NO. 230-223

RECORD PLAN
JANUARY 1996

DRAWING NUMBER

DRAWING NUMBER

DRAWING NUMBER

DRAWING NUMBER
WESTER 94
63F