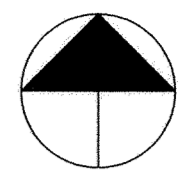


COUNTY ROAD 30

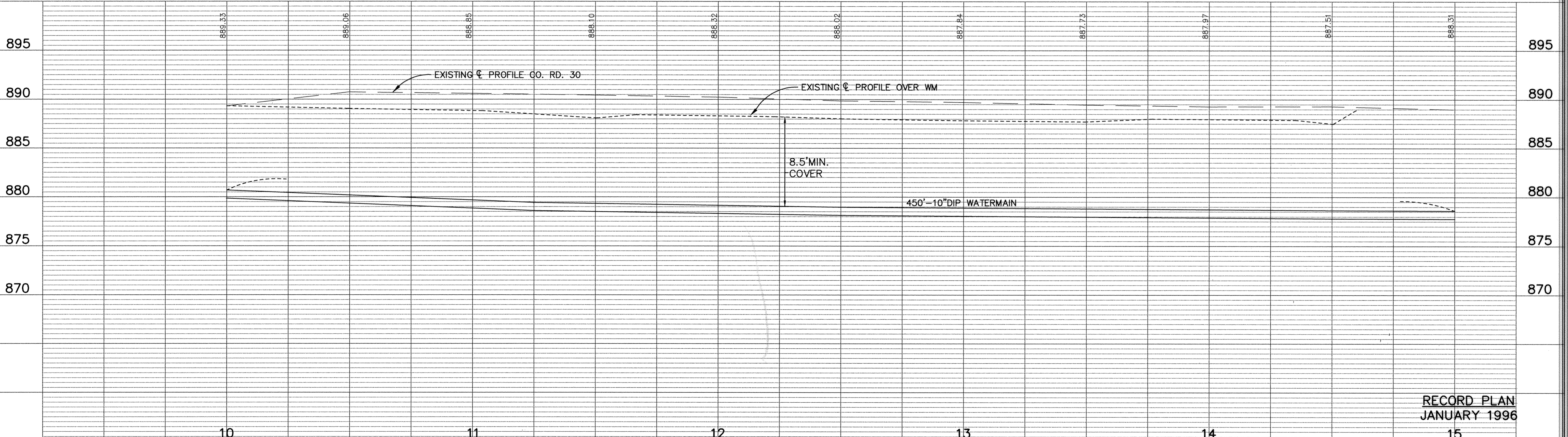
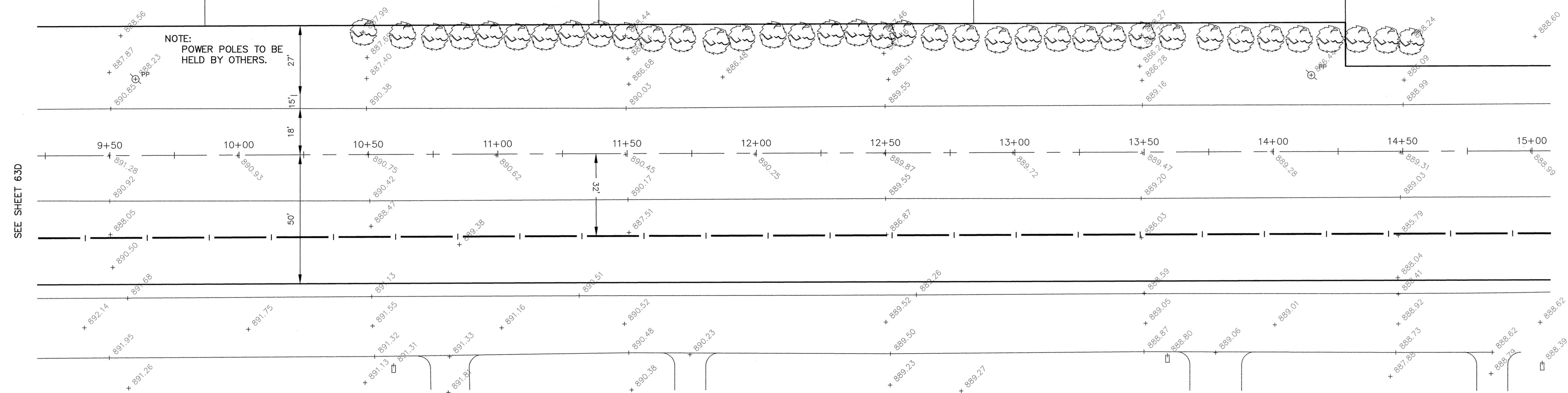
SANDPIPER ESTATES 2ND



NOTE:
POWER POLES TO BE
HELD BY OTHERS.

SEE SHEET 63D

SEE SHEET 63F



RECORD PLAN
JANUARY 1996

ER223W-5

I HEREBY CERTIFY THAT THIS PLAN, SPECIFICATION, OR REPORT WAS PREPARED BY ME OR UNDER MY DIRECT SUPERVISION AND THAT I AM A DULY REGISTERED PROFESSIONAL ENGINEER UNDER THE LAWS OF THE STATE OF MINNESOTA.
Mark V. Stueham
DATE 9/2/94 REG. NO. 19130



1326 ENERGY PARK DRIVE
ST. PAUL, MINNESOTA 55108
(612) 644-4389

9800 SHELARD PARKWAY
MINNEAPOLIS, MINNESOTA 55441
(612) 546-0432

REVISION	DATE	DESCRIPTION
1	9-15-94	CHANGE ORDER NO. 1

DESIGNED	MJG
CHECKED	
DRAWN	LCS
GRAPHIC SCALES	
0	HOR. 20
0	VERT. 5

CITY OF ELK RIVER
WATERMAIN
COUNTY ROAD 30

DATE SEPT. 1994 SHEET 63E OF 63 SHEETS PROJECT NO. 230-223

10+00 TO 14+50

DRAWING NUMBER

DRAWING NUMBER

DRAWING NUMBER

DRAWING NUMBER
WESTER 94
63E