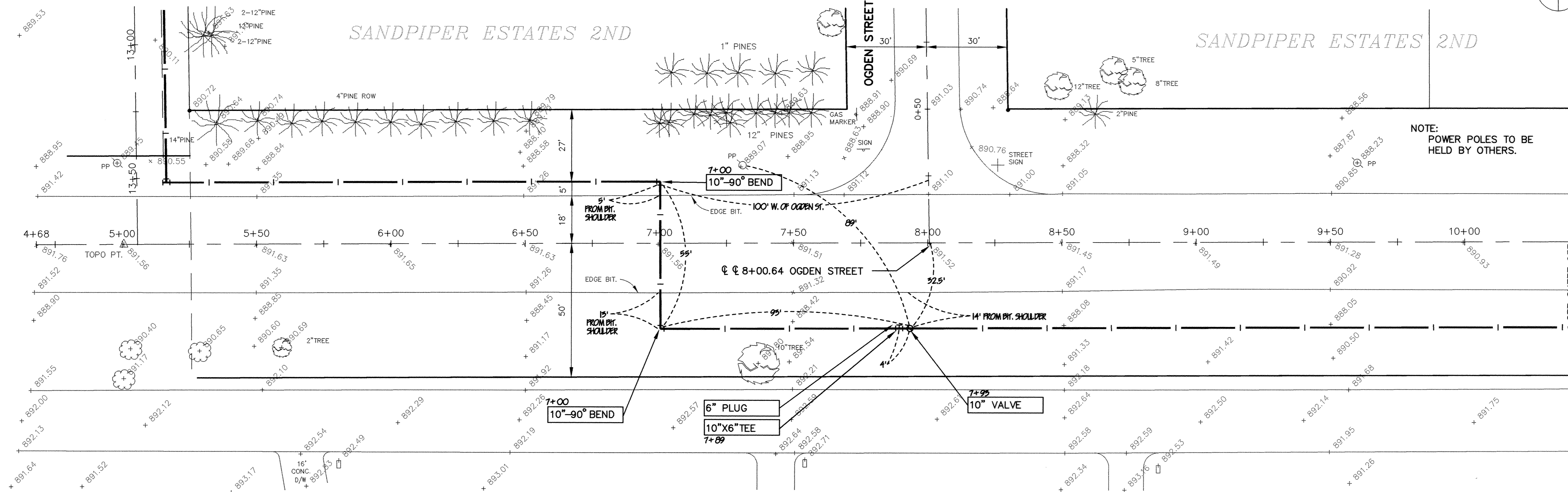
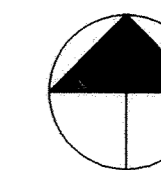


SEE SHEET 63C

# COUNTY ROAD 30

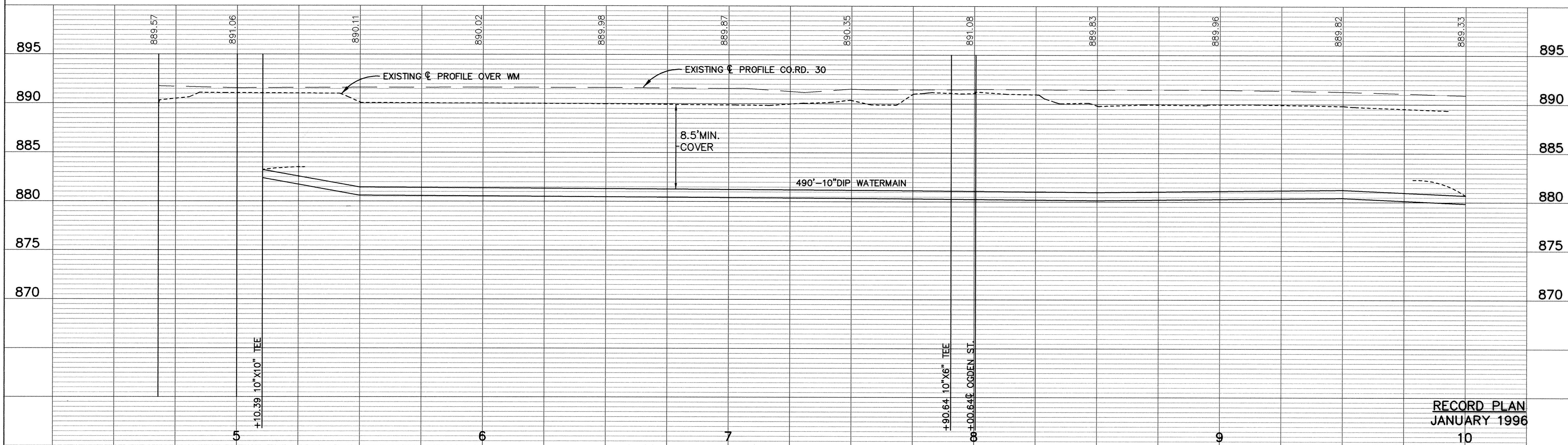
SANDPIPER ESTATES 2ND

SANDPIPER ESTATES 2ND



NOTE:  
POWER POLES TO BE  
HELD BY OTHERS.

SEE SHEET 63E



RECORD PLAN  
JANUARY 1996

I HEREBY CERTIFY THAT THIS PLAN, SPECIFICATION, OR REPORT WAS PREPARED BY ME OR UNDER MY DIRECT SUPERVISION AND THAT I AM A DULY REGISTERED PROFESSIONAL ENGINEER UNDER THE LAWS OF THE STATE OF MINNESOTA.

*Mark V. Graham*  
DATE 9/21/94 REG. NO. 19130



1326 ENERGY PARK DRIVE  
ST. PAUL, MINNESOTA 55108  
(612) 644-4389

9800 SHELARD PARKWAY  
MINNEAPOLIS, MINNESOTA 55441  
(612) 546-0432

REVISIONS	DATE	DESCRIPTION	DESIGNED	CHECKED	DRAWN
	9-15-94	CHANGE ORDER NO. 1	MJG	LCS	LCS

CITY OF ELK RIVER		WATERMAIN		COUNTY ROAD 30	
DESIGNED		CHECKED		DRAWN	
M.J.G.		L.C.S.		L.C.S.	
GRAPHIC SCALES		HORIZONTAL		VERTICAL	
0 = 20'		0 = 5'		0 = 5'	
DATE SEPT. 1994		SHEET 63D OF 63 SHEETS		PROJECT NO. 230-223	

SAECO PRODUCTS • NEW HOPK, MINNESOTA  
 REORDER BY PART NUMBER 632

DRAWING NUMBER  
 WESTER 94  
 63D