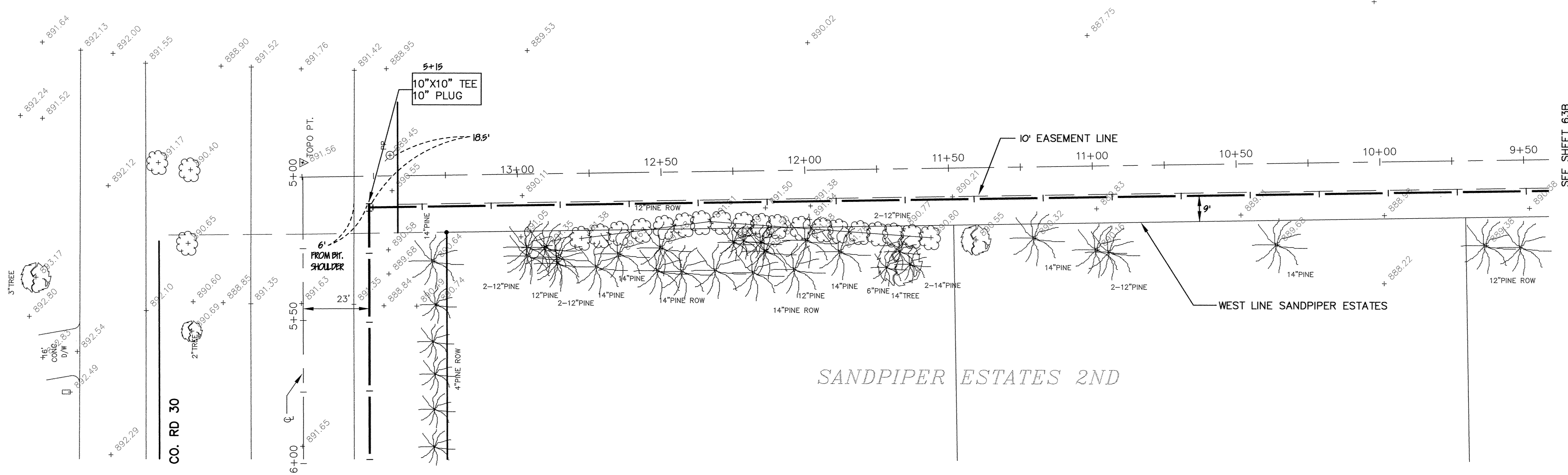
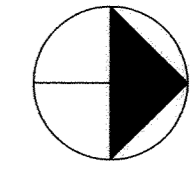
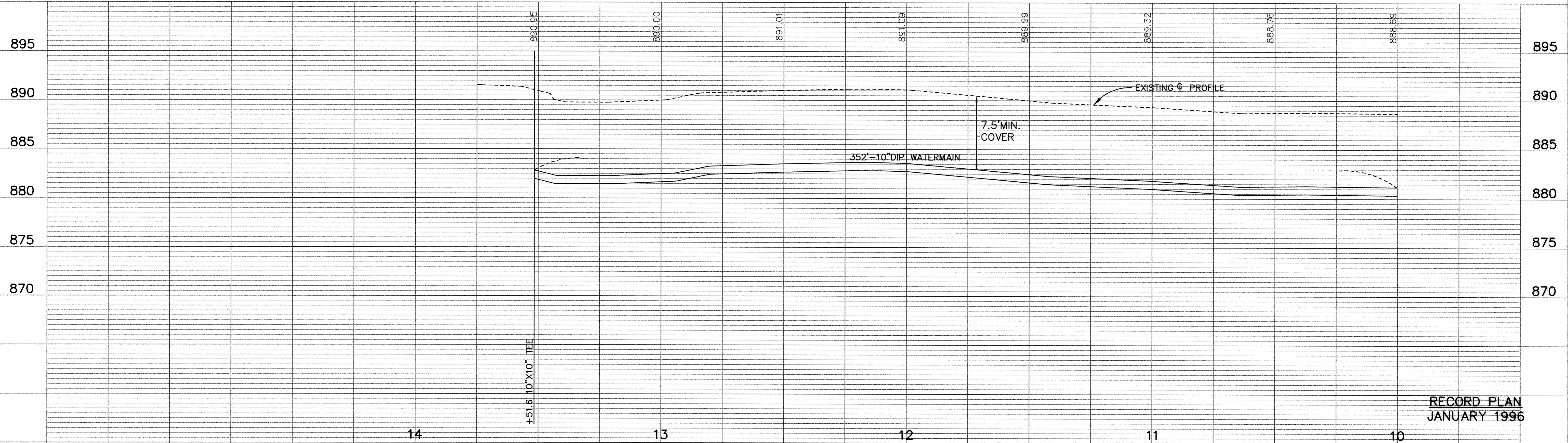


EASEMENT WEST OF SANDPIPER



SEE SHEET 63D

SEE SHEET 63B



RECORD PLAN
JANUARY 1996

I HEREBY CERTIFY THAT THIS PLAN, SPECIFICATION, OR REPORT WAS PREPARED BY ME OR UNDER MY DIRECT SUPERVISION AND THAT I AM A DULY REGISTERED PROFESSIONAL ENGINEER UNDER THE LAWS OF THE STATE OF MINNESOTA.
Mark V. Graham
DATE 6/21/94 REG. NO. 19130



1326 ENERGY PARK DRIVE
ST. PAUL, MINNESOTA 55108
(612) 644-4389
9800 SHELARD PARKWAY
MINNEAPOLIS, MINNESOTA 55441
(612) 546-0432

REVISIONS	DATE	DESCRIPTION	DESIGNED	MJG
	9-15-94	CHANGE ORDER NO. 1	CHECKED	
			DRAWN	LCS
		GRAPHIC SCALES		
		0 HOR. 20		
		0 VERT. 5		

CITY OF ELK RIVER
WATERMAIN
EASEMENT WEST OF SANDPIPER
10+00 TO 13+50
DATE SEPT. 1994 SHEET 63C OF 63 SHEETS PROJECT NO. 230-223

DRAWING NUMBER

DRAWING NUMBER

DRAWING NUMBER

DRAWING NUMBER
WESTE2 94
63C