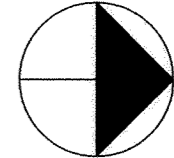
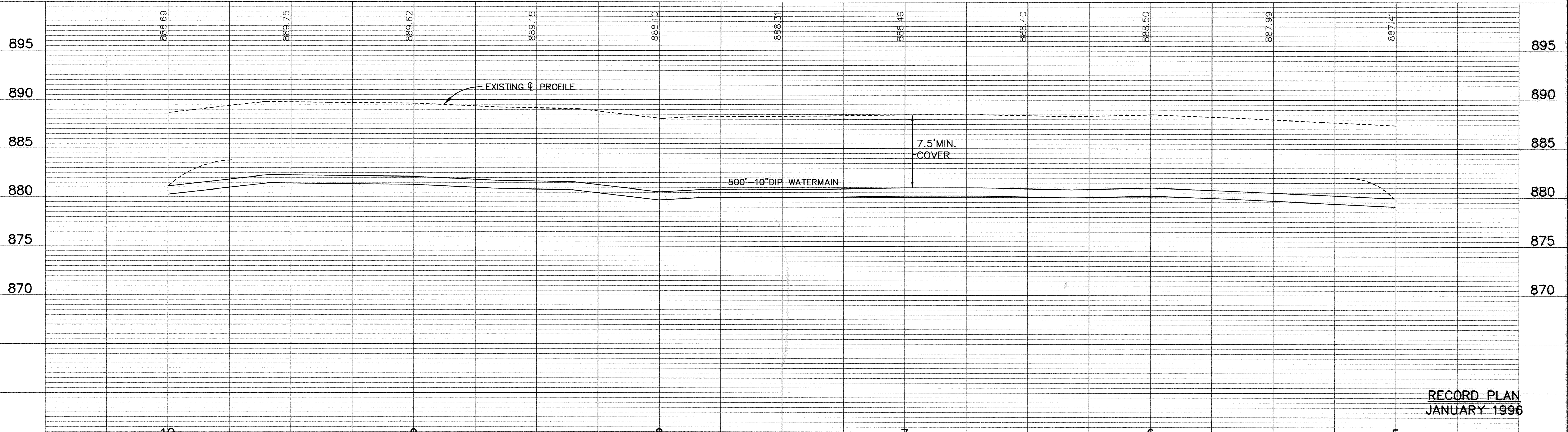
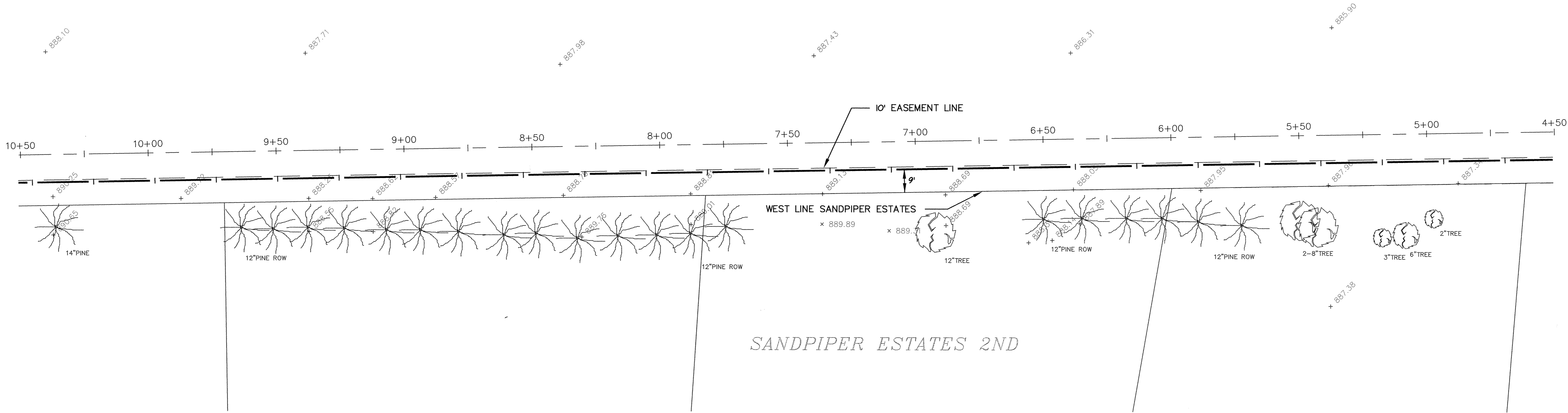


# EASEMENT WEST OF SANDPIPER



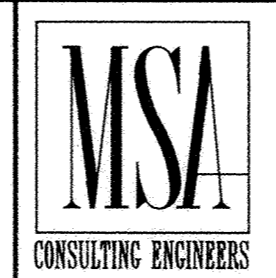
SEE SHEET 63C

SEE SHEET 63A



RECORD PLAN  
JANUARY 1996

I HEREBY CERTIFY THAT THIS PLAN, SPECIFICATION, OR REPORT WAS PREPARED BY ME OR UNDER MY DIRECT SUPERVISION AND THAT I AM A DULY REGISTERED PROFESSIONAL ENGINEER UNDER THE LAWS OF THE STATE OF MINNESOTA.  
*Mark V. Stuchman*  
DATE 9/2/94 REG. NO. 19130



1326 ENERGY PARK DRIVE  
ST. PAUL, MINNESOTA 55108  
(612) 644-4389  
9800 SHELARD PARKWAY  
MINNEAPOLIS, MINNESOTA 55441  
(612) 546-0432

REVISIONS	DATE	DESCRIPTION	DESIGNED	CHECKED	DRAWN
	9-15-94	CHANGE ORDER NO. 1	MJG		LCS

GRAPHIC SCALES  
0 HOR. 20  
0 VERT. 5

CITY OF ELK RIVER  
WATERMAIN  
EASEMENT WEST OF SANDPIPER

5+00 TO 10+00

DATE DATE SHEET **63B** OF **63** SHEETS PROJECT NO. 230-223

941

DRAWING NUMBER

DRAWING NUMBER

DRAWING NUMBER

DRAWING NUMBER  
WESTER 94  
63B