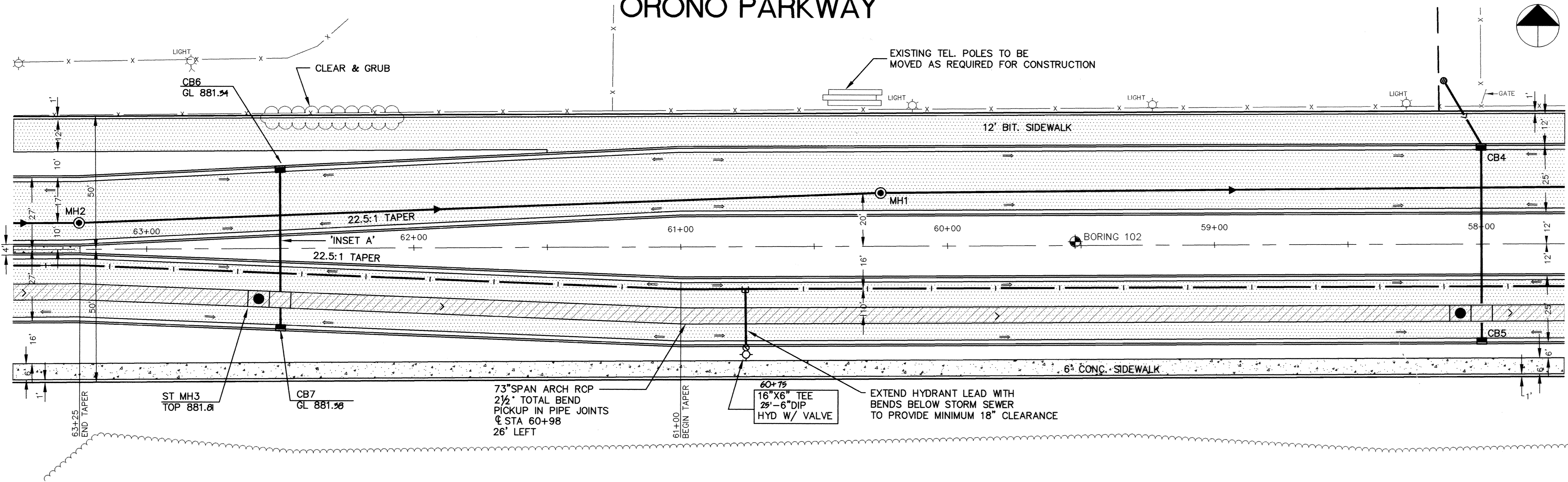
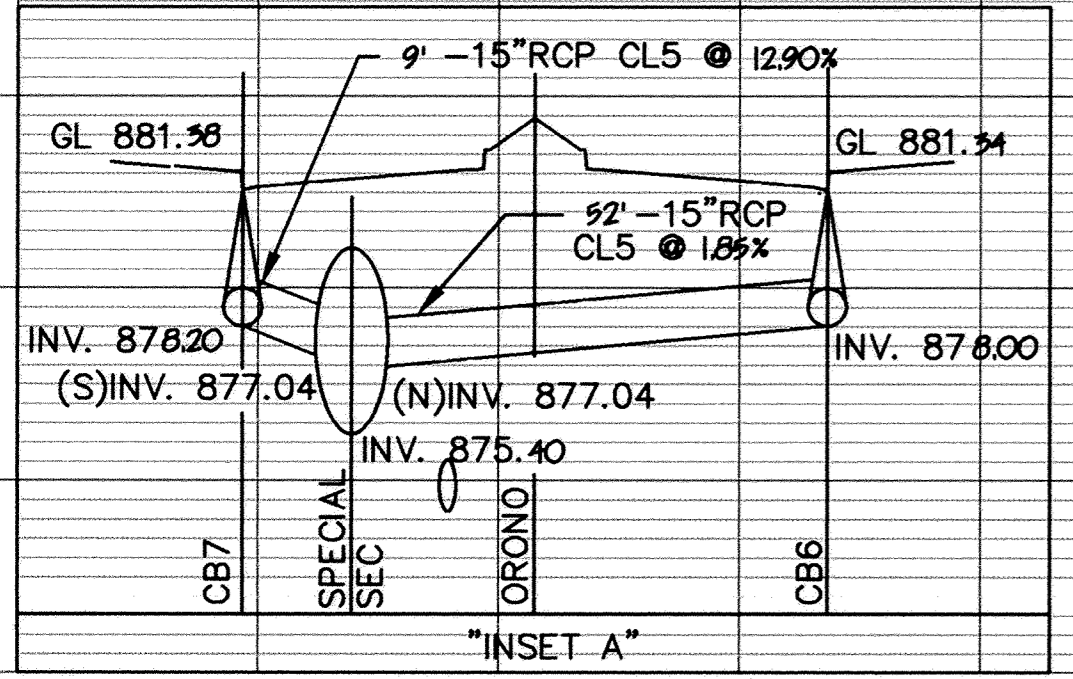
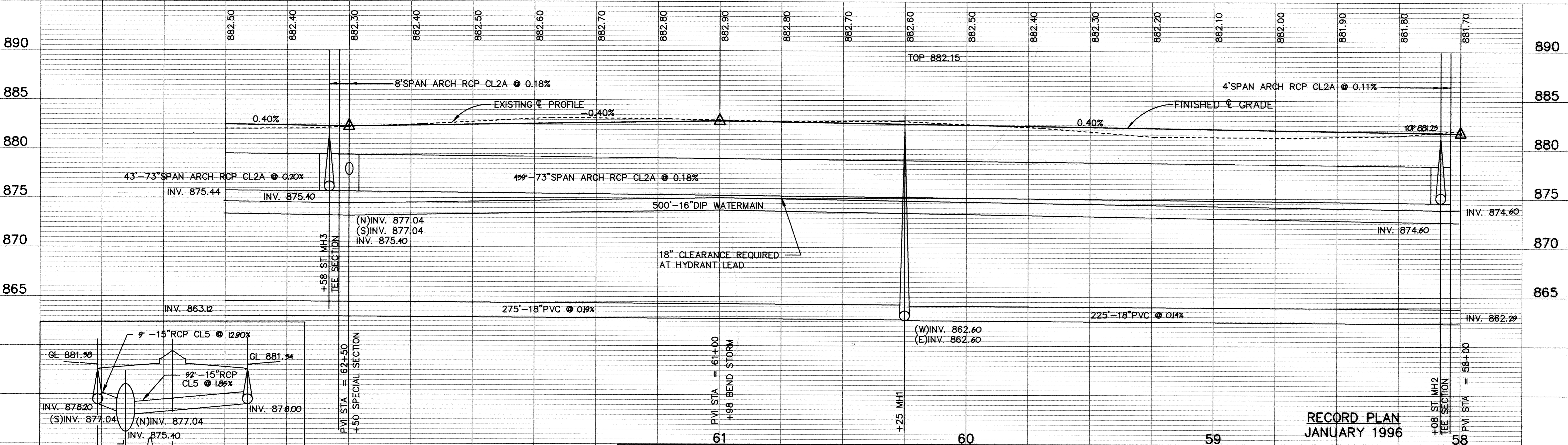


ORONO PARKWAY



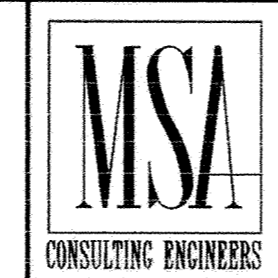
SEE SHEET 6

SEE SHEET 4



RECORD PLAN
JANUARY 1996

I HEREBY CERTIFY THAT THIS PLAN, SPECIFICATION, OR REPORT WAS PREPARED BY ME OR UNDER MY DIRECT SUPERVISION AND THAT I AM A DULY REGISTERED PROFESSIONAL ENGINEER UNDER THE LAWS OF THE STATE OF MINNESOTA.
Mark J. Guaham
DATE 9/21/94 REG. NO. 19130



1326 ENERGY PARK DRIVE
ST. PAUL, MINNESOTA 55108
(612) 644-4389
9800 SHELARD PARKWAY
MINNEAPOLIS, MINNESOTA 55441
(612) 546-0432

DATE	DESCRIPTION	DESIGNED	LCS
9-15-94	REVISED 65" TO 73" STORM	CHECKED	LCS
		DRAWN	LCS

GRAPHIC SCALE
0 20
0 VERT. 5

CITY OF ELK RIVER
SANITARY SEWER, STORM SEWER, WATERMAIN AND STREET
ORONO PARKWAY
58+00 TO 63+00
DATE AUG. 1994 SHEET 5R OF 63 SHEETS PROJECT NO. 230-223

DRAWING NUMBER WESTE2.94