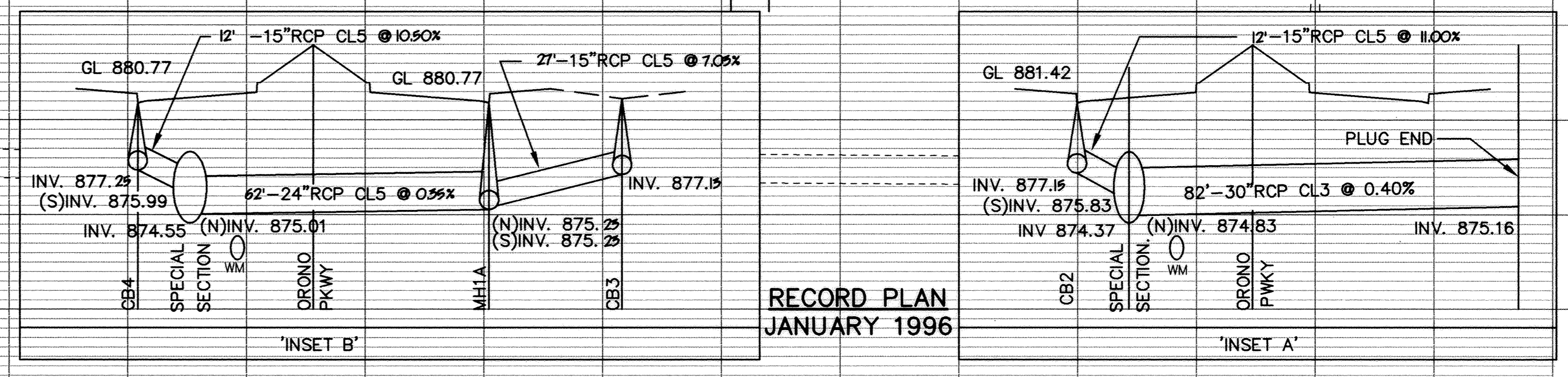
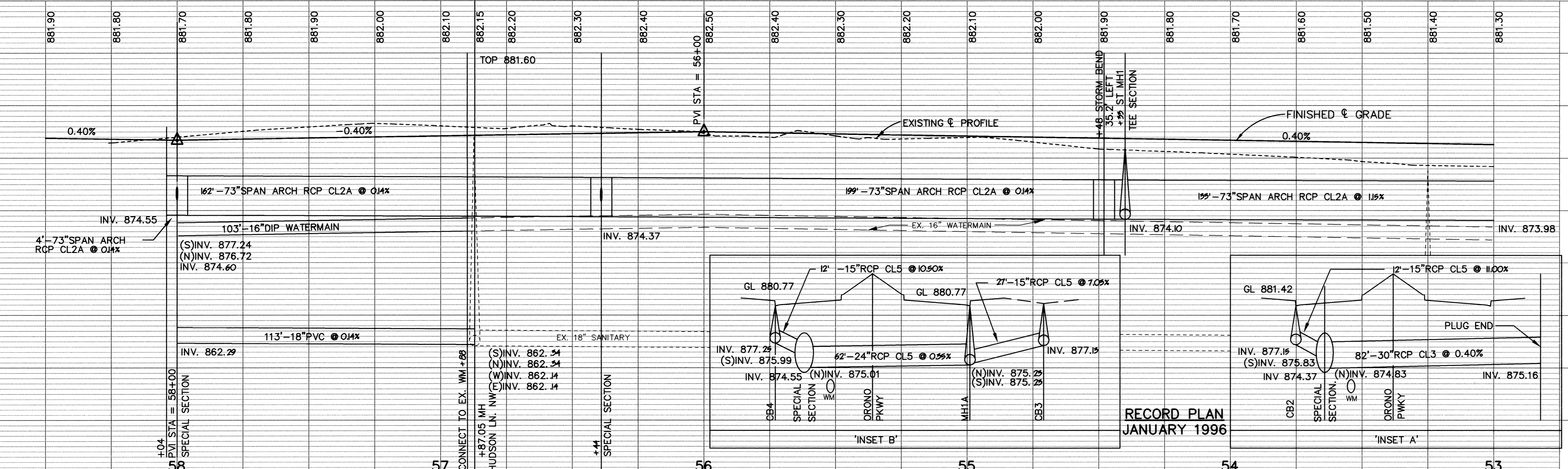
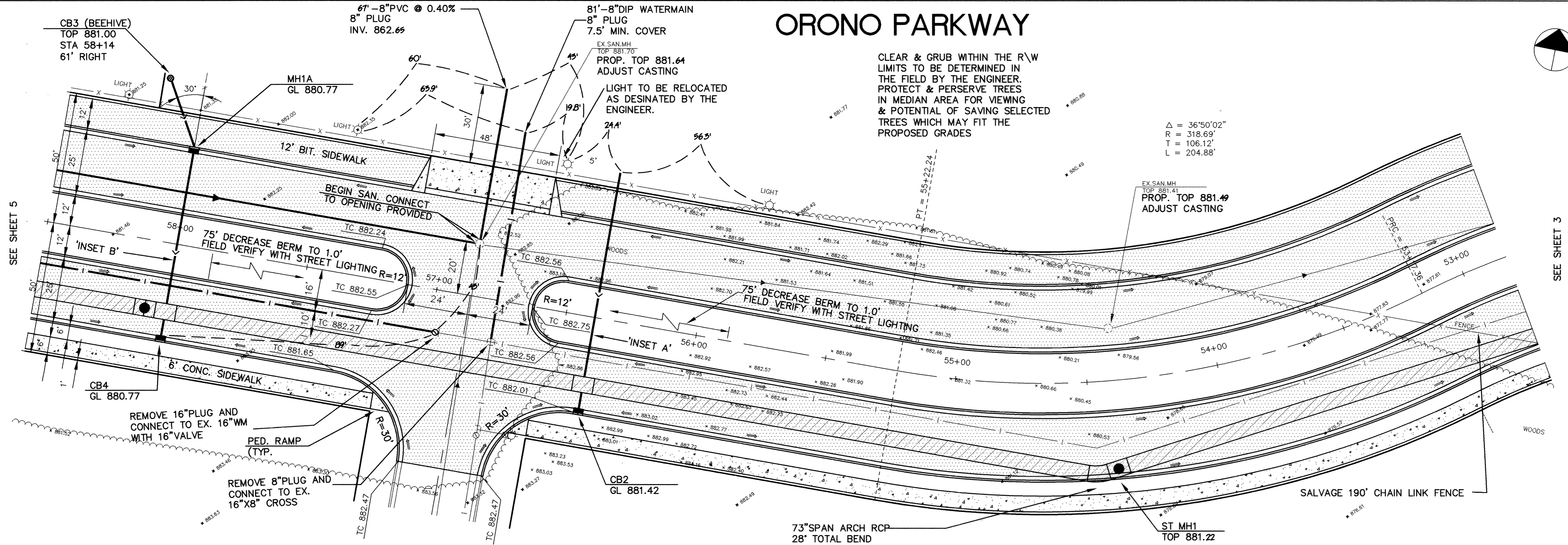


ORONO PARKWAY

CLEAR & GRUB WITHIN THE R/W LIMITS TO BE DETERMINED IN THE FIELD BY THE ENGINEER. PROTECT & PRESERVE TREES IN MEDIAN AREA FOR VIEWING & POTENTIAL OF SAVING SELECTED TREES WHICH MAY FIT THE PROPOSED GRADES

$\Delta = 36'50.02"$
 $R = 318.69'$
 $T = 106.12'$
 $L = 204.88'$



I HEREBY CERTIFY THAT THIS PLAN, SPECIFICATION, OR REPORT WAS PREPARED BY ME OR UNDER MY DIRECT SUPERVISION AND THAT I AM A DULY REGISTERED PROFESSIONAL ENGINEER UNDER THE LAWS OF THE STATE OF MINNESOTA.

Mark Abraham
DATE 7/21/94 REG. NO. 19130



1326 ENERGY PARK DRIVE
ST. PAUL, MINNESOTA 55108
(612) 644-4389

9800 SHELARD PARKWAY
MINNEAPOLIS, MINNESOTA 55441
(612) 546-0432

DATE	DESCRIPTION	DESIGNED	LCS
9-15-94	REVISED STREET & ALIGNMENT	CHECKED	CHECKED
		DRAWN	LCS
		GRAPHIC SCALE	
		0 20	
		0 VERT. 5	

CITY OF ELK RIVER
SANITARY SEWER, STORM SEWER, WATERMAIN AND STREET
ORONO PARKWAY

DATE AUG. 1994 SHEET 4R OF 63 SHEETS PROJECT NO. 230-223