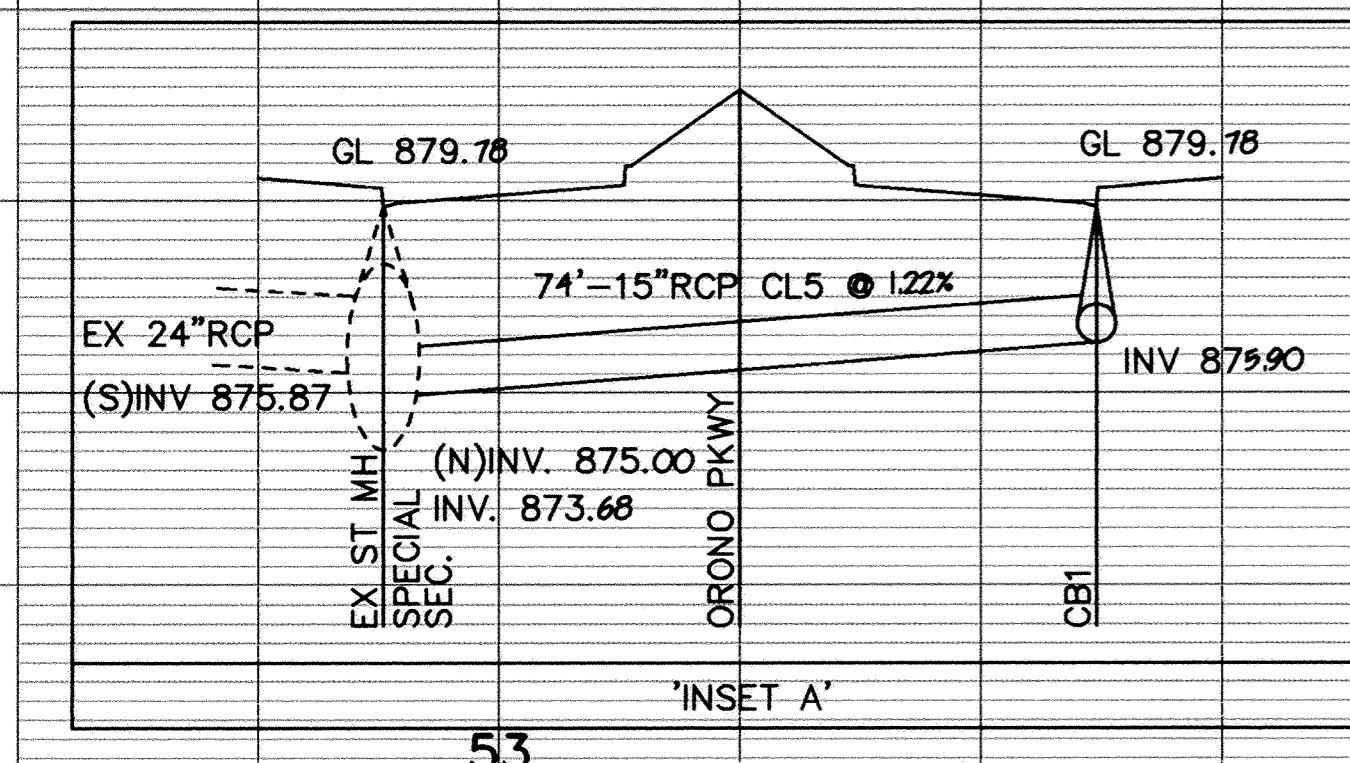
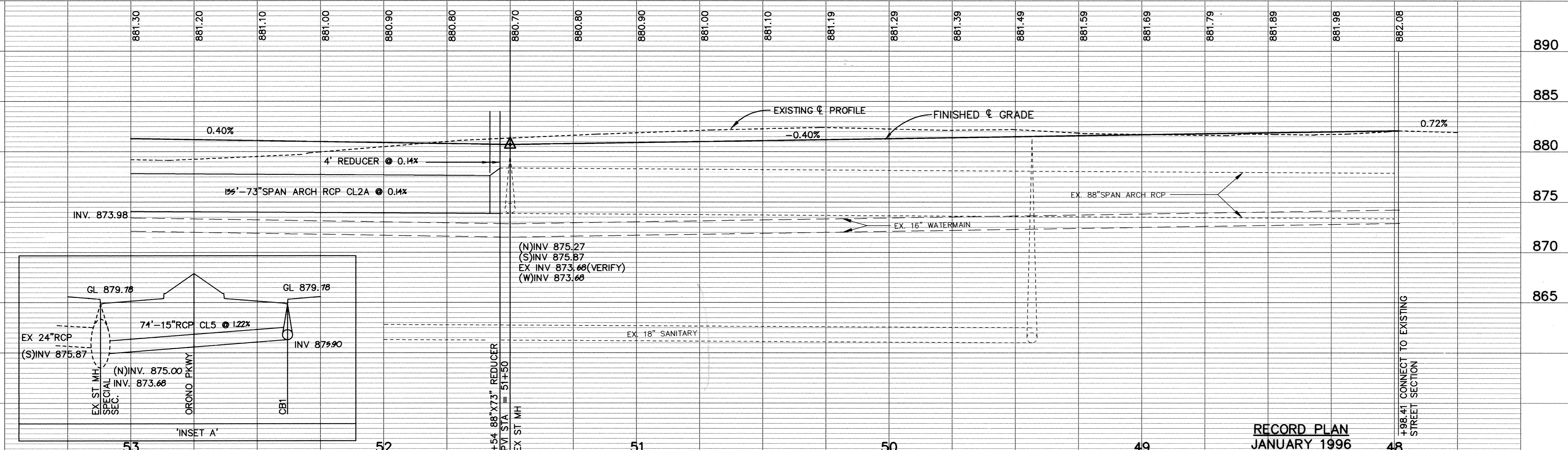
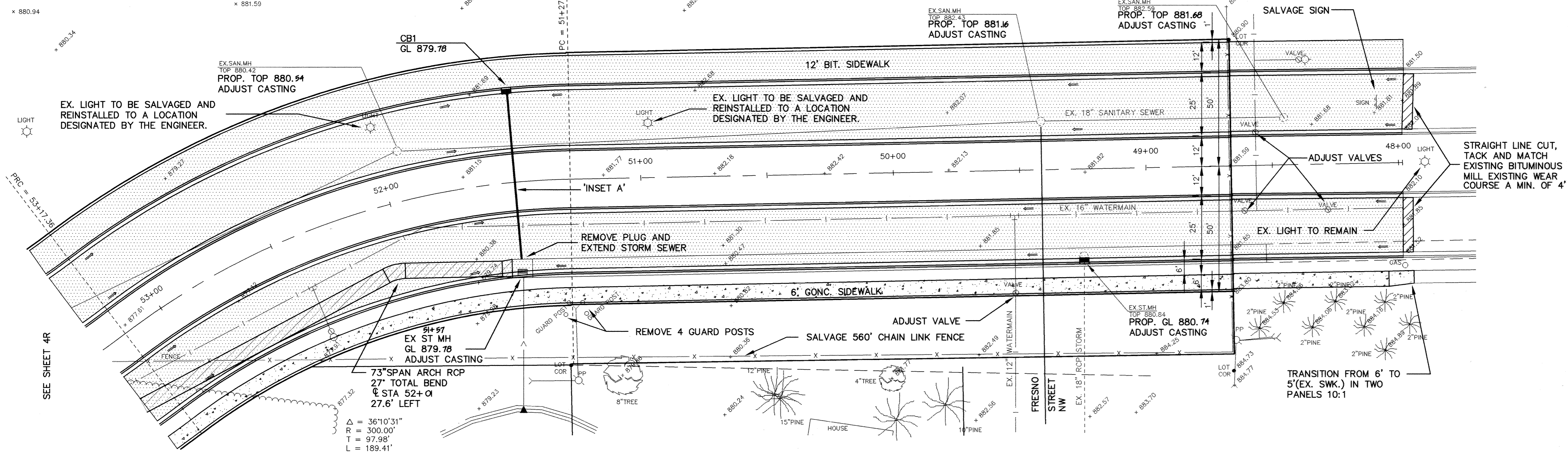
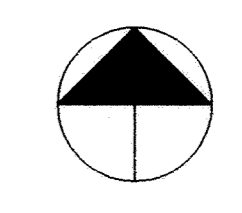


ORONO PARKWAY



I HEREBY CERTIFY THAT THIS PLAN, SPECIFICATION, OR REPORT WAS PREPARED BY ME OR UNDER MY DIRECT SUPERVISION AND THAT I AM A DULY REGISTERED PROFESSIONAL ENGINEER UNDER THE LAWS OF THE STATE OF MINNESOTA.

Mark Graham
DATE 9/21/94 REG. NO. 19130



1326 ENERGY PARK DRIVE
ST. PAUL, MINNESOTA 55108
(612) 644-4389

9800 SHELARD PARKWAY
MINNEAPOLIS, MINNESOTA 55441
(612) 546-0432

DATE	DESCRIPTION	DESIGNED	LCS
9-15-94	REVISED STREET & 88" TO 73" STORM ALIGNMENT	CHECKED	DRAWN

RECORD PLAN
JANUARY 1996

CITY OF ELK RIVER
SANITARY SEWER, STORM SEWER, WATERMAIN AND STREET
ORONO PARKWAY

48+00 TO 53+00

DATE AUG. 1994 SHEET 3R OF 63 SHEETS PROJECT NO. 230-223

DRAWING NUMBER WESTE2.94

DRAWING NUMBER 3

DRAWING NUMBER WESTE2.94

DRAWING NUMBER 3