

# 182ND AVENUE NW

SANDPIPER

SANDPIPER

SALVAGE AND REINSTALL FENCE

CONSTRUCTION LIMITS

ESTATES

CONSTRUCTION LIMITS

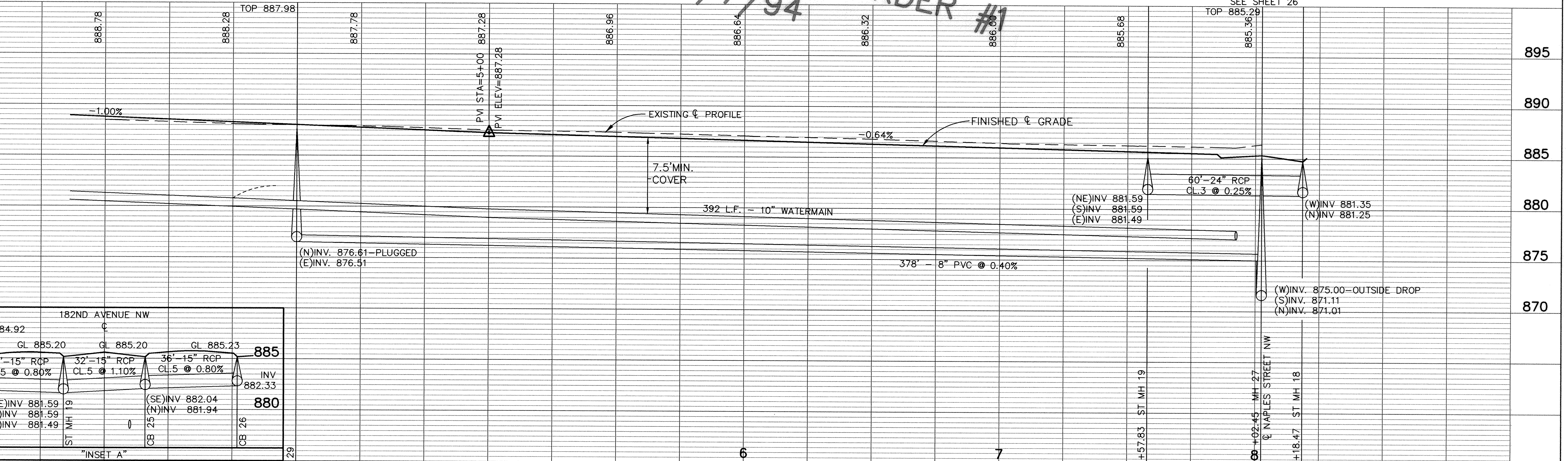
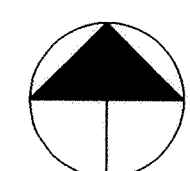
ESTATES

DELETED BY CHANGE ORDER #1  
9/7/94

SALVAGE AND REINSTALL FENCE

SEE SHEET 30

SEE SHEET 27



182ND AVENUE NW	
GL 884.92	CL 885.20
GL 885.20	CL 885.20
GL 885.23	CL 885.23
34'-15" RCP CL.5 @ 0.80%	32'-15" RCP CL.5 @ 1.10%
36'-15" RCP CL.5 @ 0.80%	
INV 881.86	INV 882.33
(NE)INV 881.59	(SE)INV 882.04
(S)INV 881.59	(N)INV 881.94
(E)INV 881.49	
CB 24	CB 25
ST MH 19	ST MH 27
	ST MH 18
"INSET A"	

I HEREBY CERTIFY THAT THIS PLAN, SPECIFICATION, OR REPORT WAS PREPARED BY ME OR UNDER MY DIRECT SUPERVISION AND THAT I AM A DULY REGISTERED PROFESSIONAL ENGINEER UNDER THE LAWS OF THE STATE OF MINNESOTA.  
*Wend J. Abraham*  
DATE 8/15/94 REG. NO. 19130



1326 ENERGY PARK DRIVE  
ST. PAUL, MINNESOTA 55108  
(612) 644-4389  
9800 SHELARD PARKWAY  
MINNEAPOLIS, MINNESOTA 55441  
(612) 546-0432

REVISIONS	DATE	DESCRIPTION	DESIGNED	CHECKED	DRAWN

GRAPHIC SCALE  
0 20  
VERT. 5

CITY OF ELK RIVER  
SANITARY SEWER, WATERMAIN, STREET AND STORM SEWER  
182ND AVENUE NW  
4+00 TO 8+02.45  
DATE AUGUST 1994 SHEET 31 OF 63 SHEETS PROJECT NO. 230-223