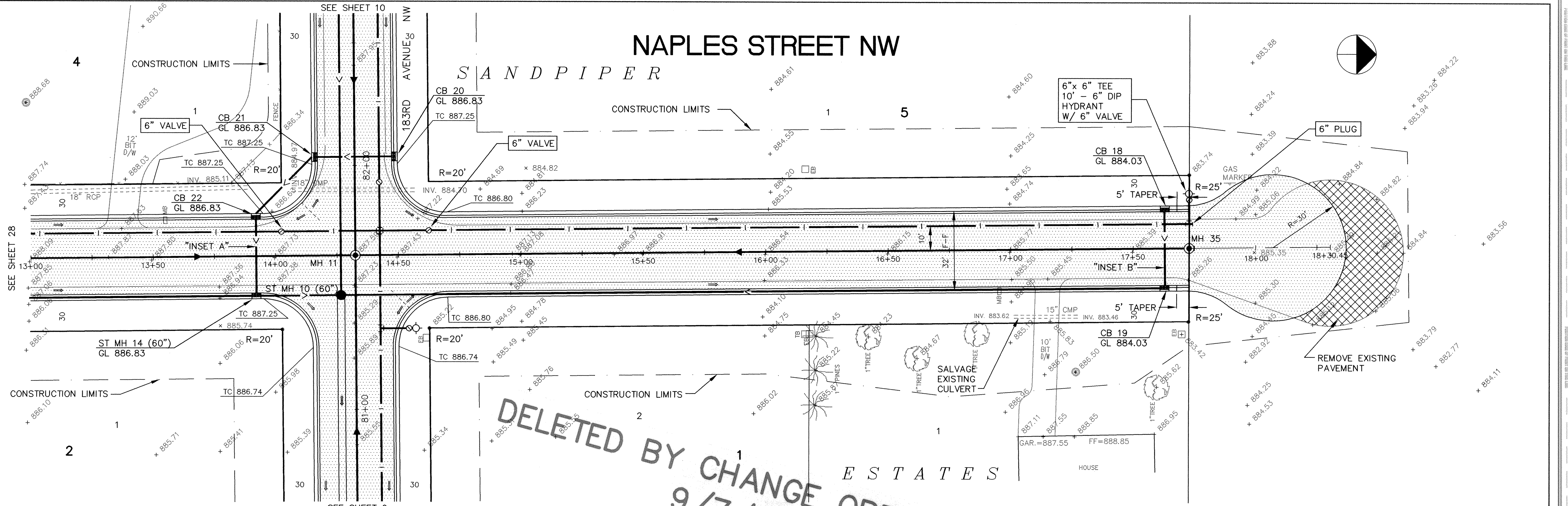
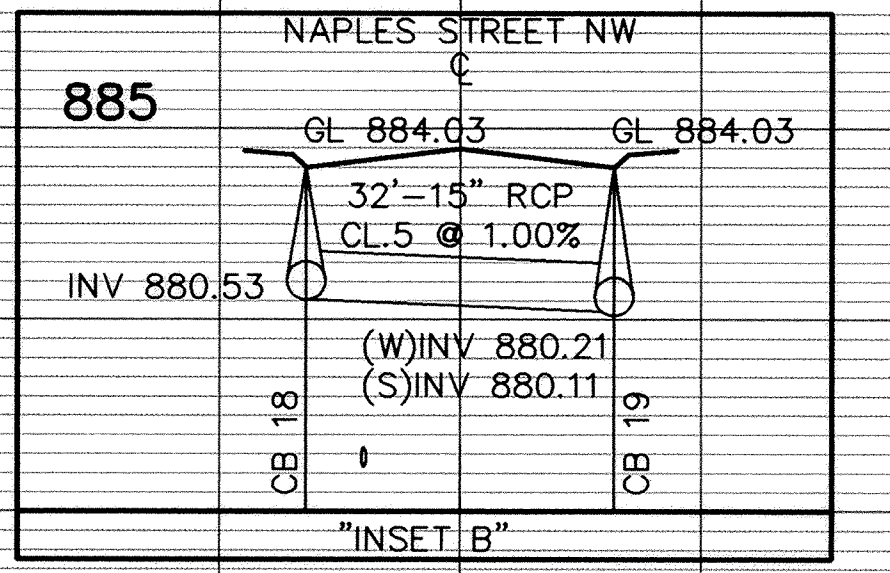
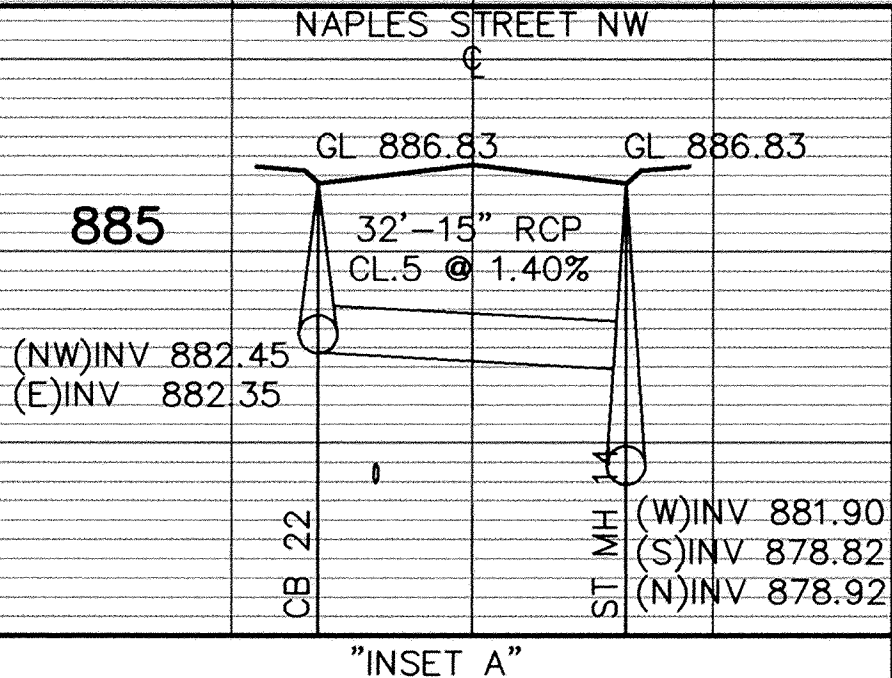
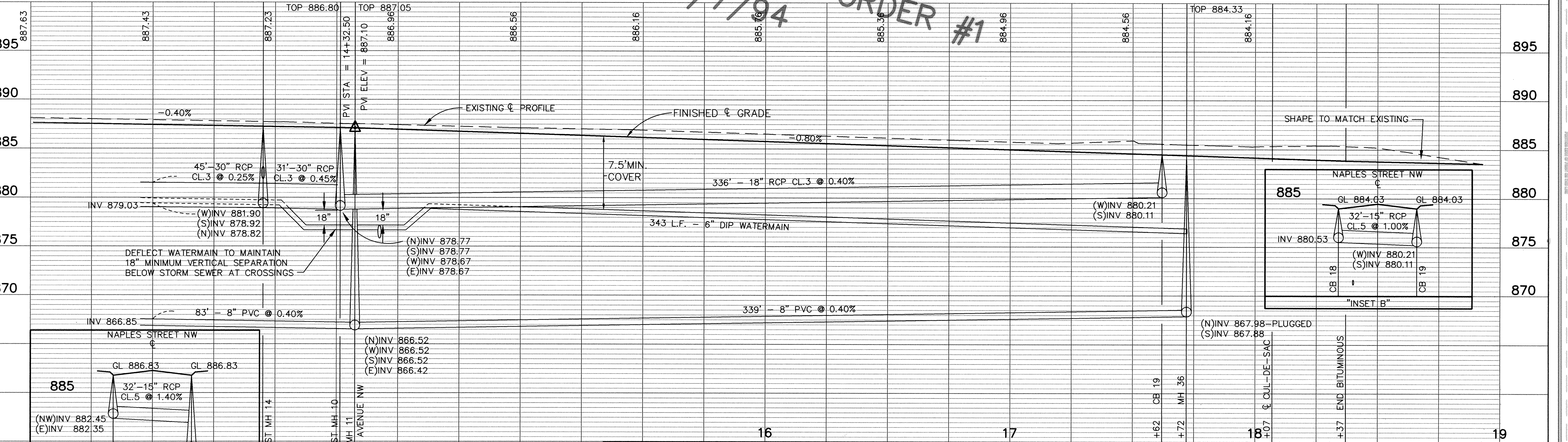


# NAPLES STREET NW

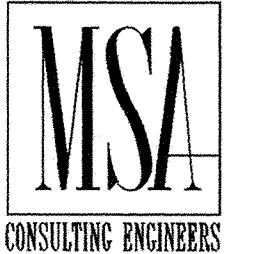
SANDPIPER



DELETED BY CHANGE ORDER #1  
9/7/94



I HEREBY CERTIFY THAT THIS PLAN, SPECIFICATION, OR REPORT WAS PREPARED BY ME OR UNDER MY DIRECT SUPERVISION AND THAT I AM A DULY REGISTERED PROFESSIONAL ENGINEER UNDER THE LAWS OF THE STATE OF MINNESOTA.  
*Mark V. Graham*  
DATE 8/12/94 REG. NO. 1930



1326 ENERGY PARK DRIVE  
ST. PAUL, MINNESOTA 55108  
(612) 644-4389  
  
9800 SHELARD PARKWAY  
MINNEAPOLIS, MINNESOTA 55441  
(612) 546-0432

REVISIONS	DATE	DESCRIPTION	DESIGNED	CHECKED	DRAWN

CITY OF ELK RIVER  
SANITARY SEWER, WATERMAIN, STREET AND STORM SEWER  
NAPLES STREET NW  
13+50 TO 19+00

DATE AUGUST 1994 SHEET 29 OF 63 SHEETS PROJECT NO. 230-223