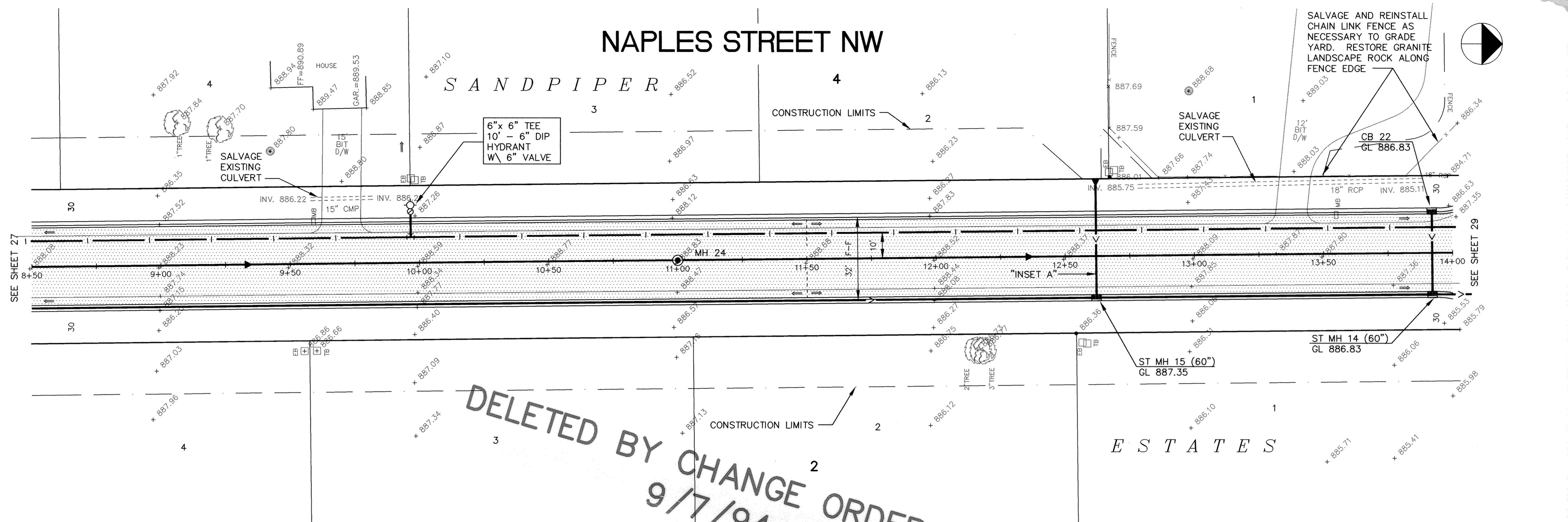
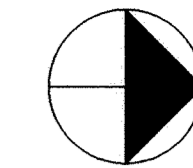


NAPLES STREET NW

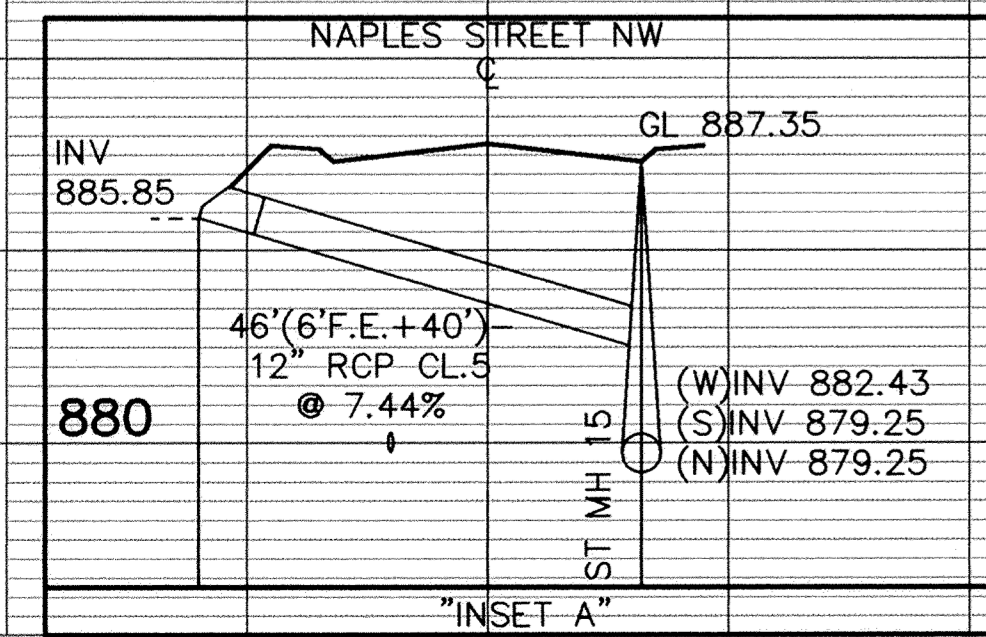
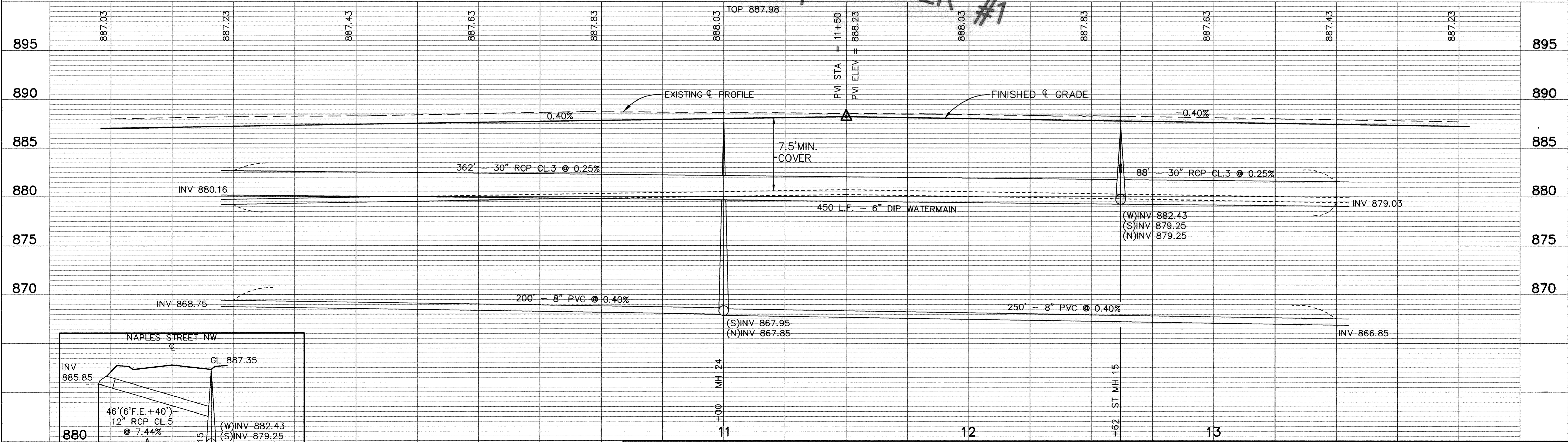
SANDPIPER

CONSTRUCTION LIMITS

SALVAGE AND REINSTALL CHAIN LINK FENCE AS NECESSARY TO GRADE YARD. RESTORE GRANITE LANDSCAPE ROCK ALONG FENCE EDGE



DELETED BY CHANGE ORDER #1
9/7/94



I HEREBY CERTIFY THAT THIS PLAN, SPECIFICATION, OR REPORT WAS PREPARED BY ME OR UNDER MY DIRECT SUPERVISION AND THAT I AM A DULY REGISTERED PROFESSIONAL ENGINEER UNDER THE LAWS OF THE STATE OF MINNESOTA.
Maud J. Luohan
DATE 8/15/94 REG. NO. 19130



1326 ENERGY PARK DRIVE
ST. PAUL, MINNESOTA 55108
(612) 644-4389

9800 SHELARD PARKWAY
MINNEAPOLIS, MINNESOTA 55441
(612) 546-0432

| REVISIONS | DATE | DESCRIPTION | DESIGNED | CHECKED | DRAWN |
|-----------|------|-------------|----------|---------|-------|
| | | | | | |

GRAPHIC SCALE
0 20
0 5
VERT.

CITY OF ELK RIVER
SANITARY SEWER, WATERMAIN, STREET AND STORM SEWER
NAPLES STREET NW
9+00 TO 13+50
DATE AUGUST 1994 SHEET 28 OF 63 SHEETS PROJECT NO. 230-223