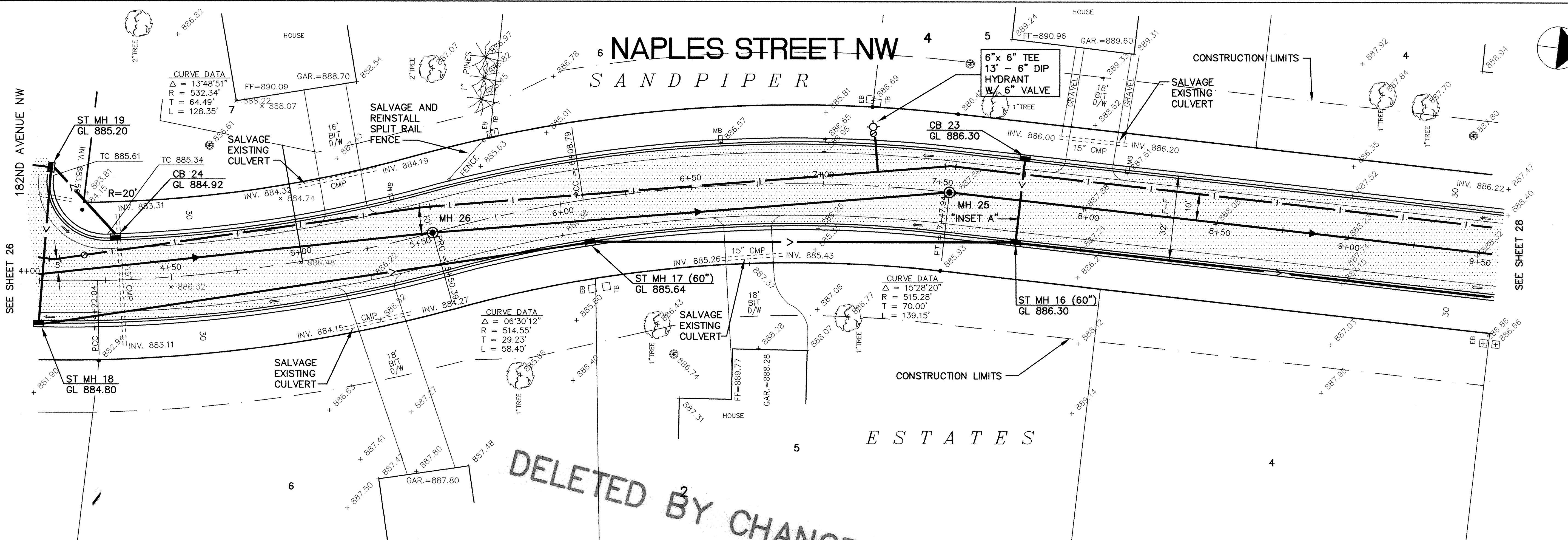
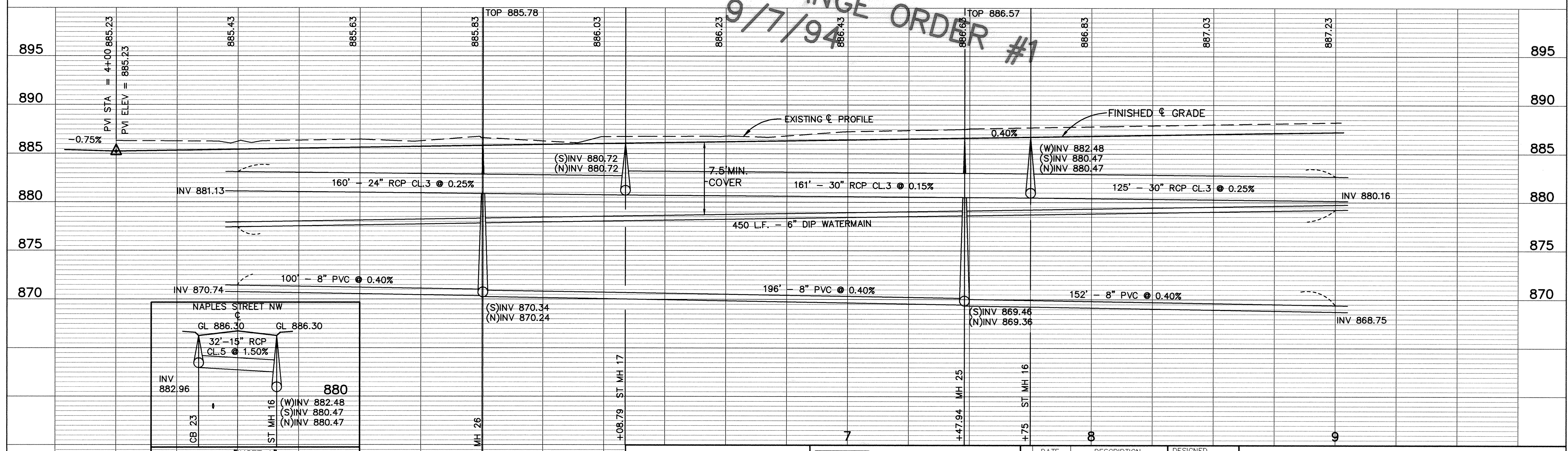


NAPLES STREET NW

SANDPIPER

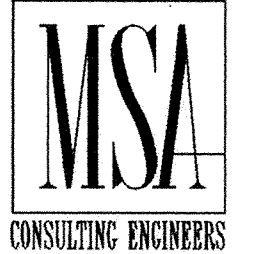


DELETED BY CHANGE ORDER #1
 9/7/94



I HEREBY CERTIFY THAT THIS PLAN, SPECIFICATION, OR REPORT WAS PREPARED BY ME OR UNDER MY DIRECT SUPERVISION AND THAT I AM A DULY REGISTERED PROFESSIONAL ENGINEER UNDER THE LAWS OF THE STATE OF MINNESOTA.

Mark V. Lusham
 DATE 8/15/94 REG. NO. 17150



1326 ENERGY PARK DRIVE
 ST. PAUL, MINNESOTA 55108
 (612) 644-4389

9800 SHELARD PARKWAY
 MINNEAPOLIS, MINNESOTA 55441
 (612) 546-0432

REVISIONS	DATE	DESCRIPTION	DESIGNED	CHECKED	DRAWN

GRAPHIC SCALE
 0 20
 0 5
 VERT.

CITY OF ELK RIVER
 SANITARY SEWER, WATERMAIN, STREET AND STORM SEWER
 NAPLES STREET NW

4+50 TO 9+00

DATE AUGUST 1994 SHEET 27 OF 63 SHEETS PROJECT NO. 230-223