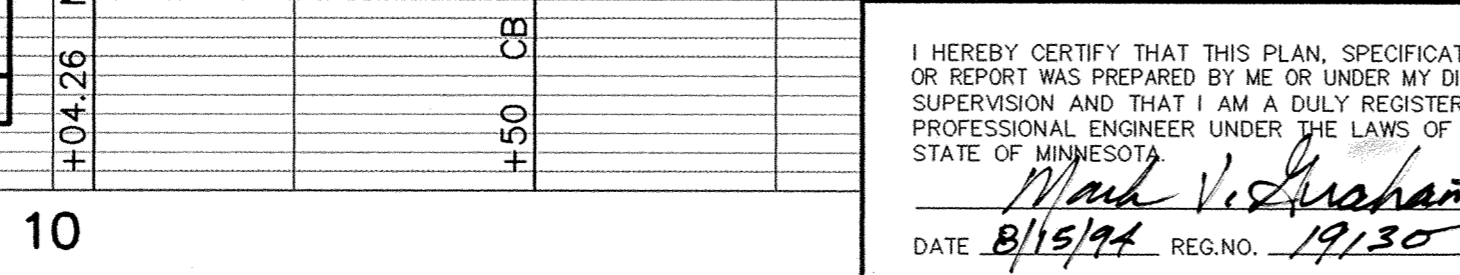
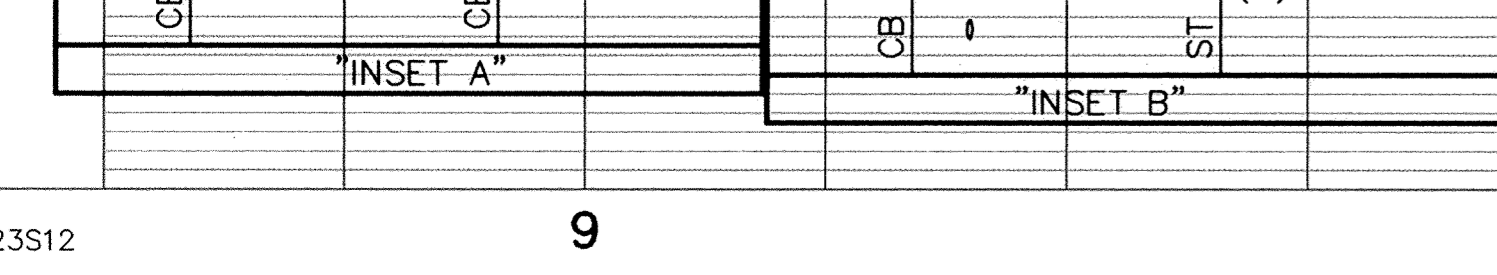
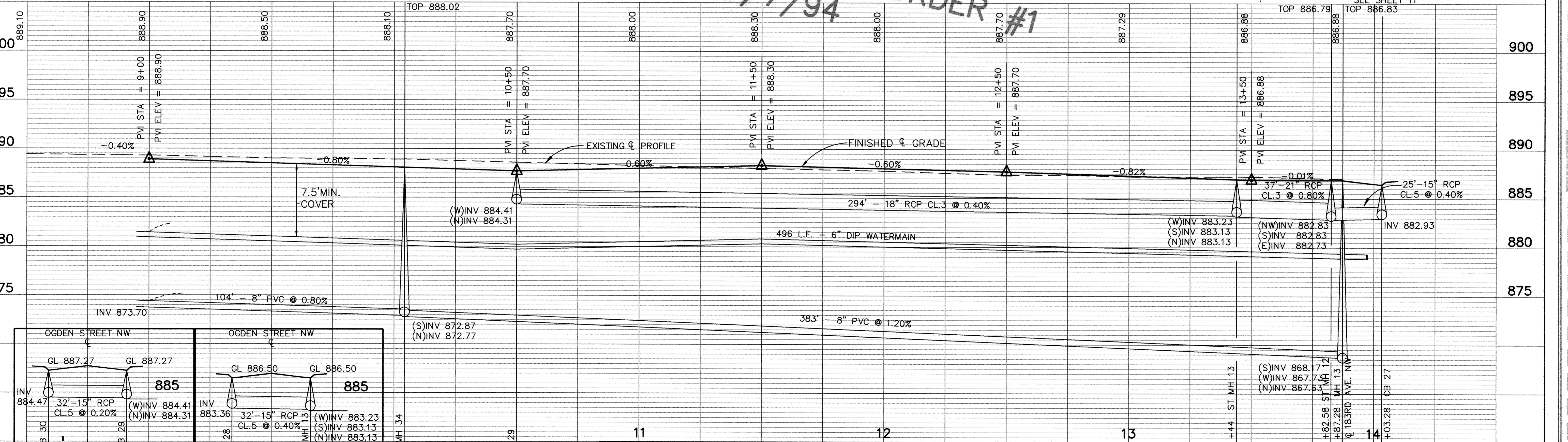
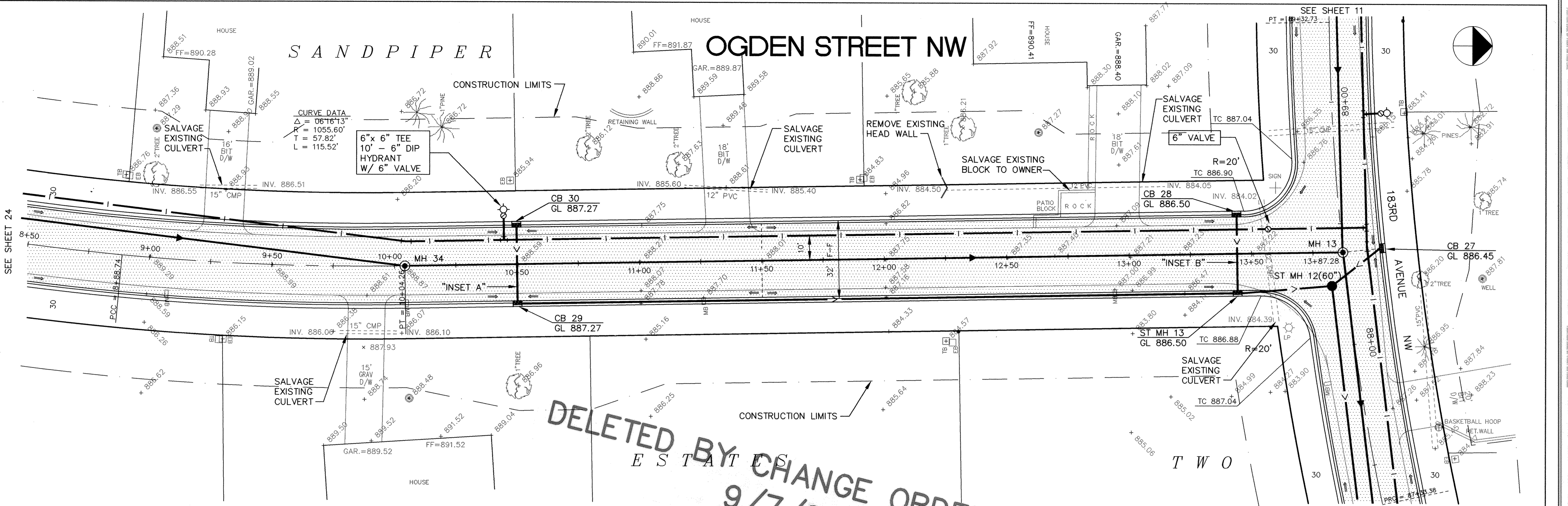


S&CO PRODUCTS • NEW HOPE, MINNESOTA
 REPRODUCED BY PART NUMBER 6592
 S&CO PRODUCTS • NEW HOPE, MINNESOTA
 REPRODUCED BY PART NUMBER 6592
 S&CO PRODUCTS • NEW HOPE, MINNESOTA
 REPRODUCED BY PART NUMBER 6592
 S&CO PRODUCTS • NEW HOPE, MINNESOTA
 REPRODUCED BY PART NUMBER 6592



I HEREBY CERTIFY THAT THIS PLAN, SPECIFICATION, OR REPORT WAS PREPARED BY ME OR UNDER MY DIRECT SUPERVISION AND THAT I AM A DULY REGISTERED PROFESSIONAL ENGINEER UNDER THE LAWS OF THE STATE OF MINNESOTA.
Mark V. Lushan
 DATE 8/15/94 REG. NO. 19130



1326 ENERGY PARK DRIVE
 ST. PAUL, MINNESOTA 55108
 (612) 644-4389
 9800 SHELARD PARKWAY
 MINNEAPOLIS, MINNESOTA 55441
 (612) 546-0432

DATE	DESCRIPTION	DESIGNED	CHECKED	DRAWN

GRAPHIC SCALE
 0 5 10 20
 VERT.

CITY OF ELK RIVER
 SANITARY SEWER, WATERMAIN, STREET AND STORM SEWER
 OGDEN STREET NW
 9+00 TO 14+00
 DATE AUGUST 1994 SHEET 25 OF 63 SHEETS PROJECT NO. 230-223