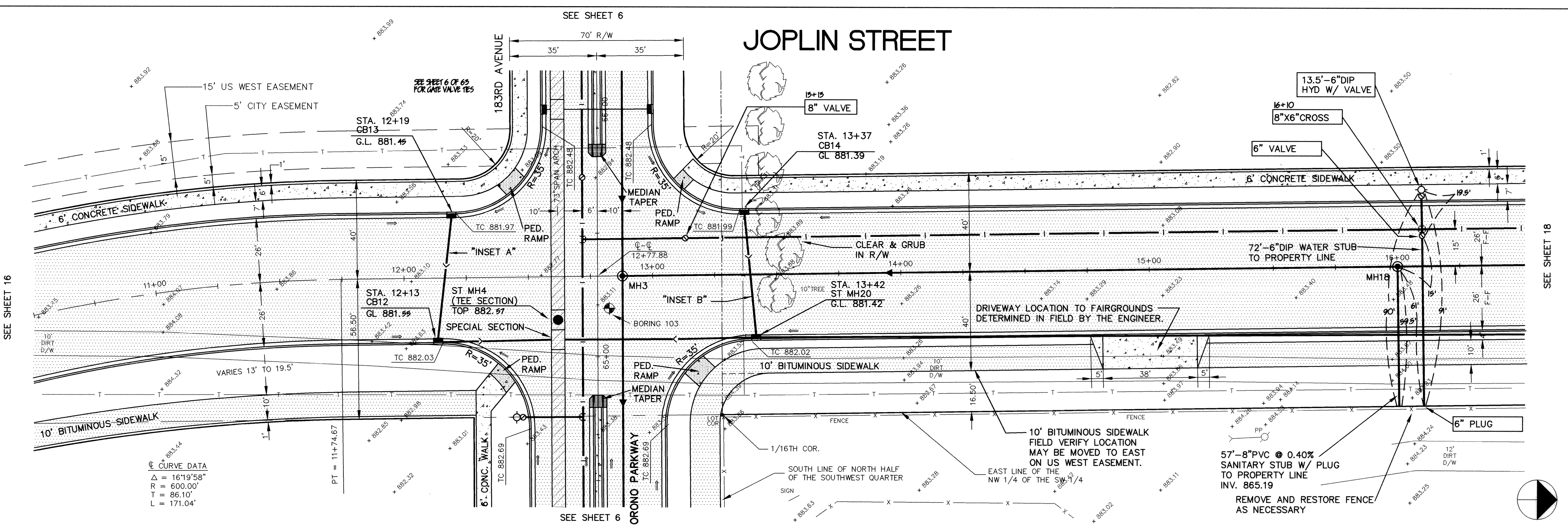
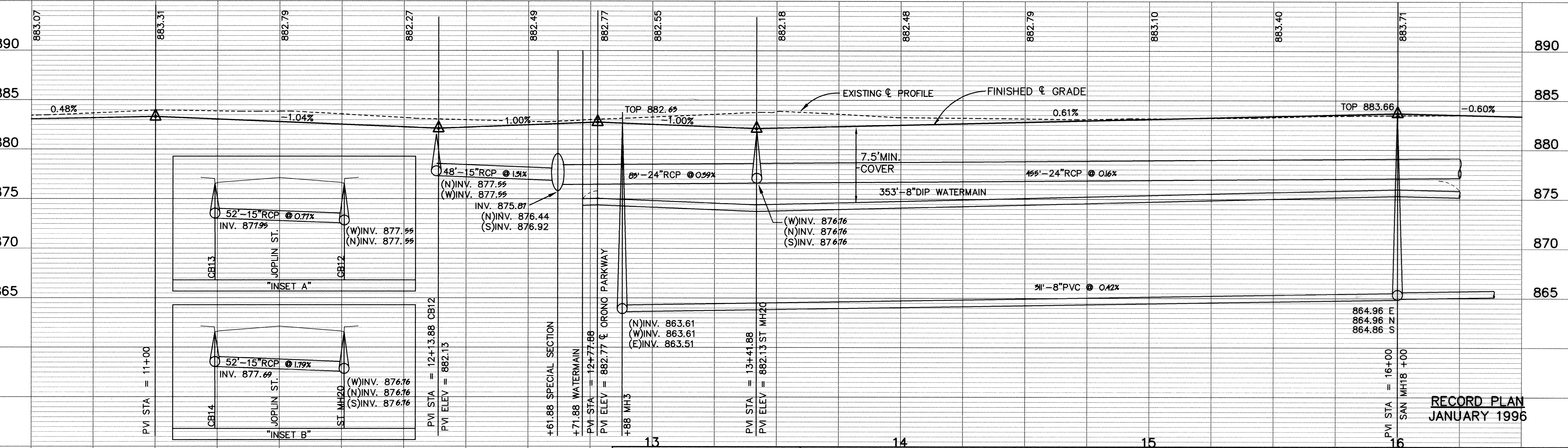


# JOPLIN STREET



SEE SHEET 16

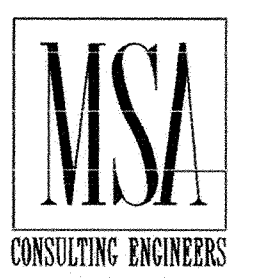
SEE SHEET 18



**RECORD PLAN  
JANUARY 1996**

I HEREBY CERTIFY THAT THIS PLAN, SPECIFICATION, OR REPORT WAS PREPARED BY ME OR UNDER MY DIRECT SUPERVISION AND THAT I AM A DULY REGISTERED PROFESSIONAL ENGINEER UNDER THE LAWS OF THE STATE OF MINNESOTA.

*Mark V. Graham*  
DATE: 9/21/94 REG. NO. 19130



1326 ENERGY PARK DRIVE  
ST. PAUL, MINNESOTA 55108  
(612) 644-4389

9800 SHELARD PARKWAY  
MINNEAPOLIS, MINNESOTA 55441  
(612) 546-0432

REVISIONS	DATE	DESCRIPTION
1	9-15-94	ADDED US WEST EASE & DRIVEY FOR FAIRGROUNDS
2	4-3-95	CHANGE ORDER NO. 2

DESIGNED	LCS
CHECKED	LCS
DRAWN	LCS
GRAPHIC SCALE	0 20 40
VERT.	0 5

CITY OF ELK RIVER  
SANITARY SEWER, STORM SEWER, WATERMAIN AND STREET  
JOPLIN STREET

10+50 TO 16+25

DATE AUG. 1994 SHEET 17 OF 63 SHEETS PROJECT NO. 230-223