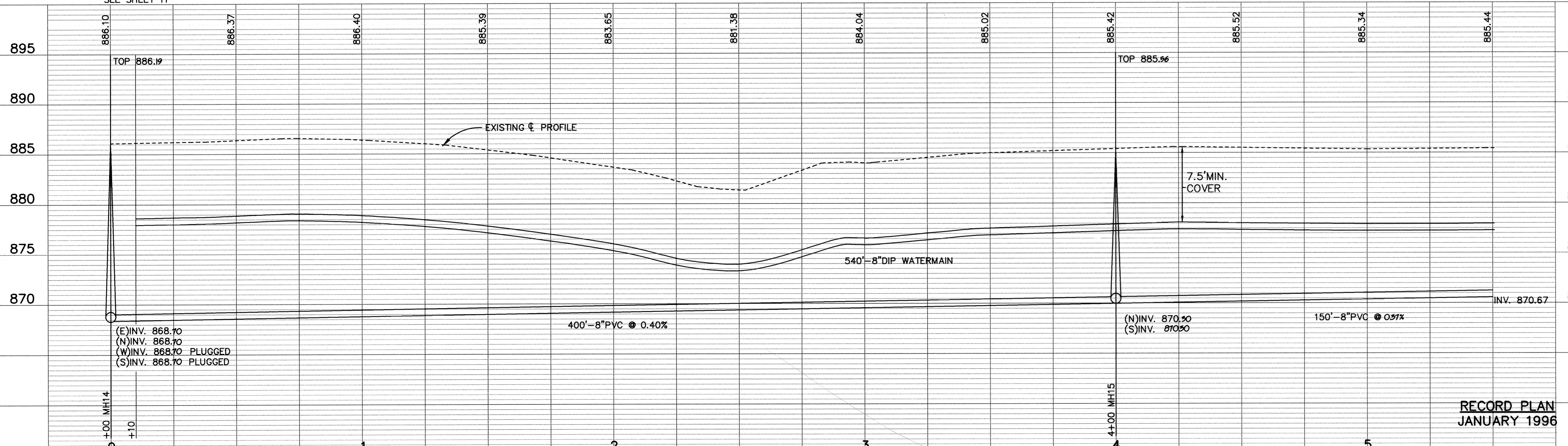
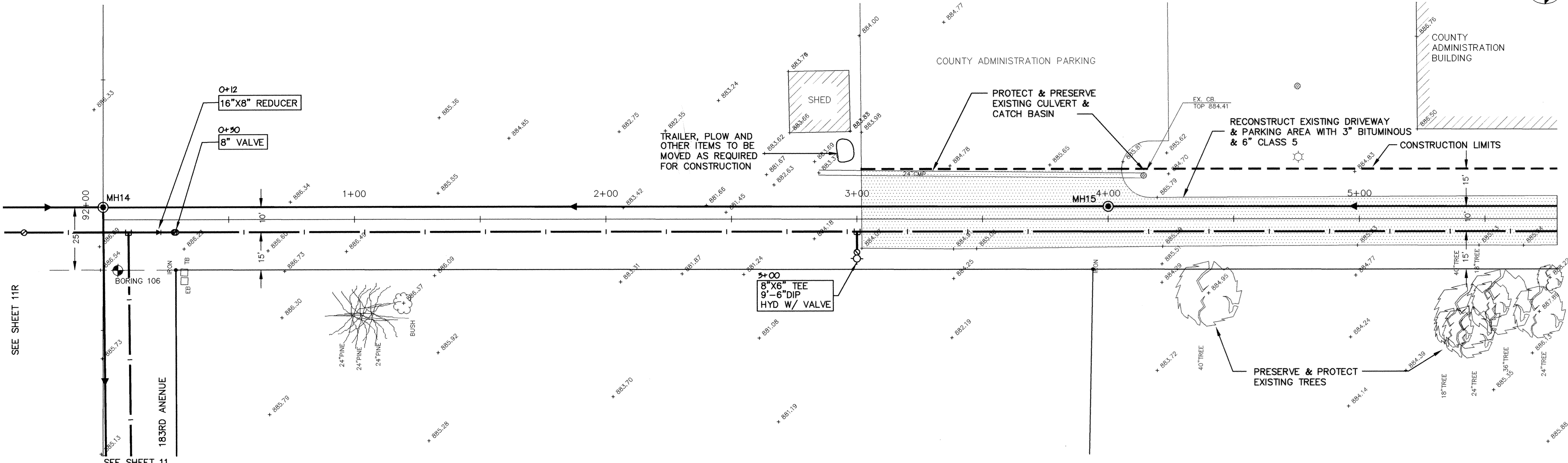
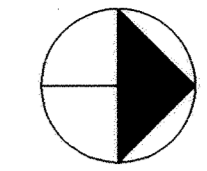


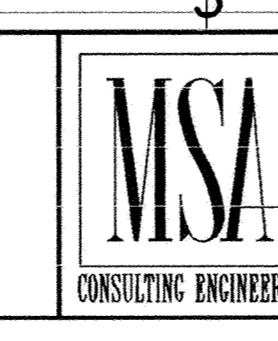
COUNTY ADMINISTRATION BUILDING EASEMENT



895	886.10	886.37	886.40	885.39	883.65	881.38	884.04	885.02	885.42	885.52	885.34	885.44	895
890													890
885													885
880													880
875													875
870													870

I HEREBY CERTIFY THAT THIS PLAN, SPECIFICATION, OR REPORT WAS PREPARED BY ME OR UNDER MY DIRECT SUPERVISION AND THAT I AM A DULY REGISTERED PROFESSIONAL ENGINEER UNDER THE LAWS OF THE STATE OF MINNESOTA.

M. V. Strahm
 DATE 9/2/94 REG. NO. 19130



1326 ENERGY PARK DRIVE
 ST. PAUL, MINNESOTA 55108
 (612) 644-4389

9800 SHELARD PARKWAY
 MINNEAPOLIS, MINNESOTA 55441
 (612) 546-0432

DATE	DESCRIPTION

DESIGNED	LCS
CHECKED	LCS
DRAWN	LCS
GRAPHIC SCALE	0 20
	0 5

CITY OF ELK RIVER
 SANITARY SEWER AND WATERMAIN
 COUNTY ADMINISTRATION BUILDING EASEMENT

0+00 TO 5+50

DATE AUG. 1994 SHEET 12 OF 63 SHEETS PROJECT NO. 230-223

RECORD PLAN
 JANUARY 1996