

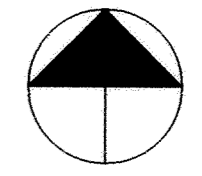
SEE SHEET 12

183RD AVENUE NW

SANDPIPER

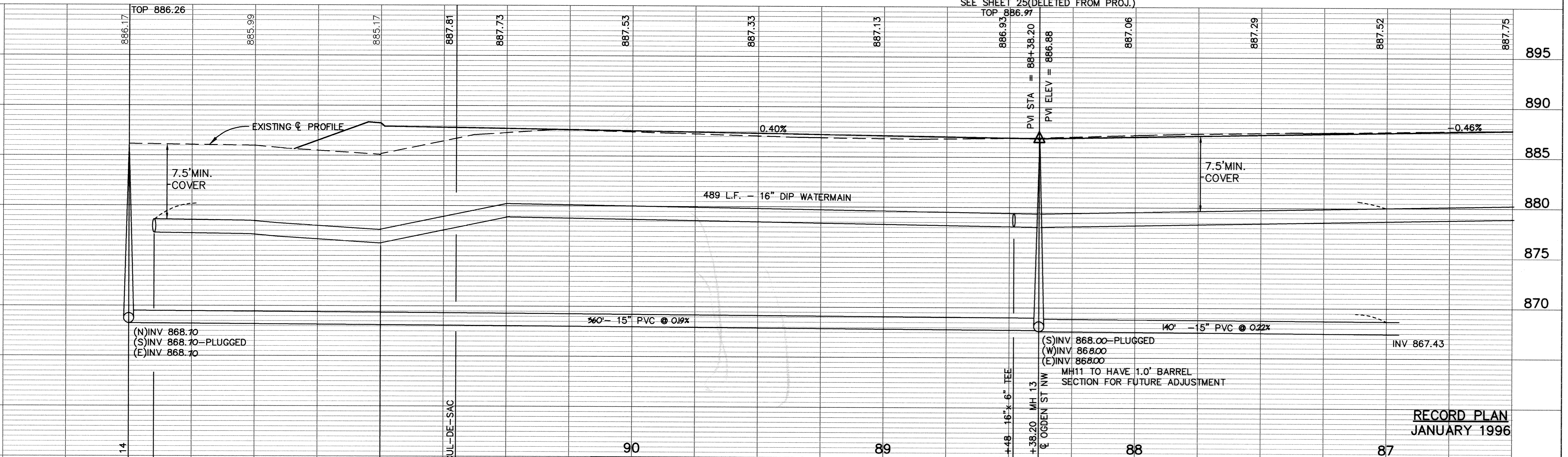
NOTE:
WATERMAIN SHALL HAVE 7.5'
OF COVER BELOW FUTURE
STREET ϕ PROFILE

CURVE DATA
 $\Delta = 10^{\circ}57'00''$
 $R = 1043.12'$
 $T = 99.98'$
 $L = 199.35'$



SEE SHEET 12
40' EASEMENT LINE
SEE SHEET 63A

SEE SHEET 10R



ER223SSR

92

91

I HEREBY CERTIFY THAT THIS PLAN, SPECIFICATION, OR REPORT WAS PREPARED BY ME OR UNDER MY DIRECT SUPERVISION AND THAT I AM A DULY REGISTERED PROFESSIONAL ENGINEER UNDER THE LAWS OF THE STATE OF MINNESOTA.

Mark V. Graham
 DATE 9/2/94 REG. NO. 19130



1326 ENERGY PARK DRIVE
 ST. PAUL, MINNESOTA 55108
 (612) 644-4389

9800 SHELARD PARKWAY
 MINNEAPOLIS, MINNESOTA 55441
 (612) 546-0432

DATE	DESCRIPTION	DESIGNED	M.J.G.
9-15-94	CHANGE ORDER NO.1	CHECKED	
		DRAWN	I.C.S.

REVISIONS	DATE	DESCRIPTION
0		
1		
2		
3		
4		
5		

GRAPHIC SCALE
0 20
0 5
L VERT. 5

CITY OF ELK RIVER
 SANITARY SEWER, WATERMAIN, STREET
 183RD AVENUE NW

87+00 TO 92+00

DATE AUGUST 1994 SHEET 11R OF 63 SHEETS PROJECT NO. 230-223

RECORD PLAN
JANUARY 1996

999

DRAWING NUMBER

DRAWING NUMBER

DRAWING NUMBER

DRAWING NUMBER
WESTER 94
11