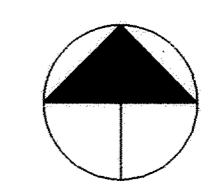


SDC PROJECTS • NEWTOWN, MINNESOTA  
DESIGNED BY PART NUMBER 0502  
SDC PROJECTS • NEWTOWN, MINNESOTA  
DESIGNED BY PART NUMBER 0502  
SDC PROJECTS • NEWTOWN, MINNESOTA  
DESIGNED BY PART NUMBER 0502  
SDC PROJECTS • NEWTOWN, MINNESOTA  
DESIGNED BY PART NUMBER 0502



# 183RD AVENUE NW

SANDPIPER

SANDPIPER

ESTATES

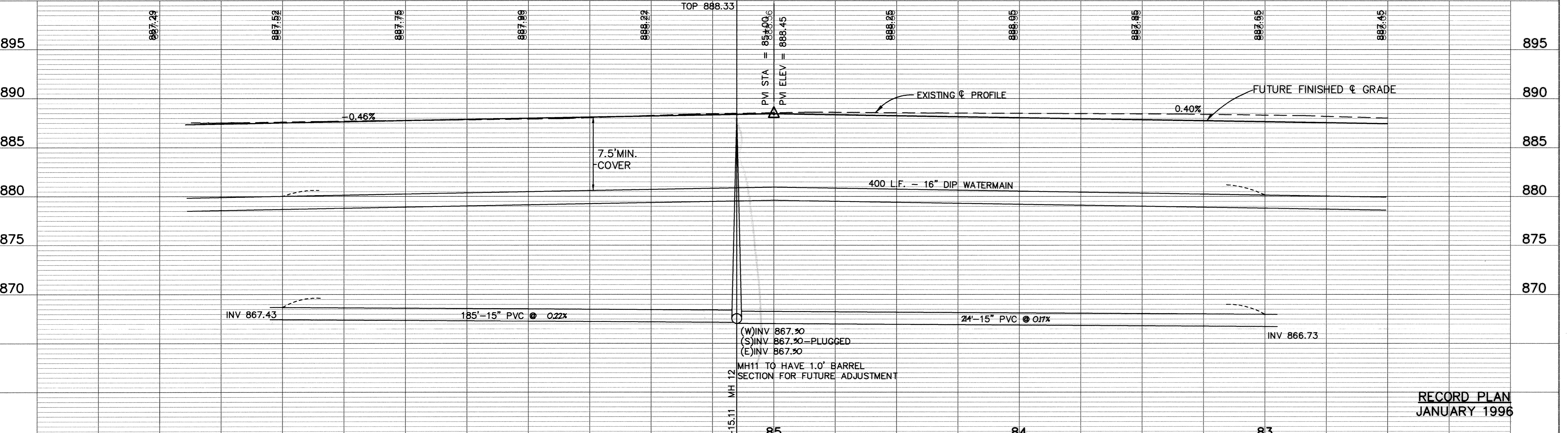
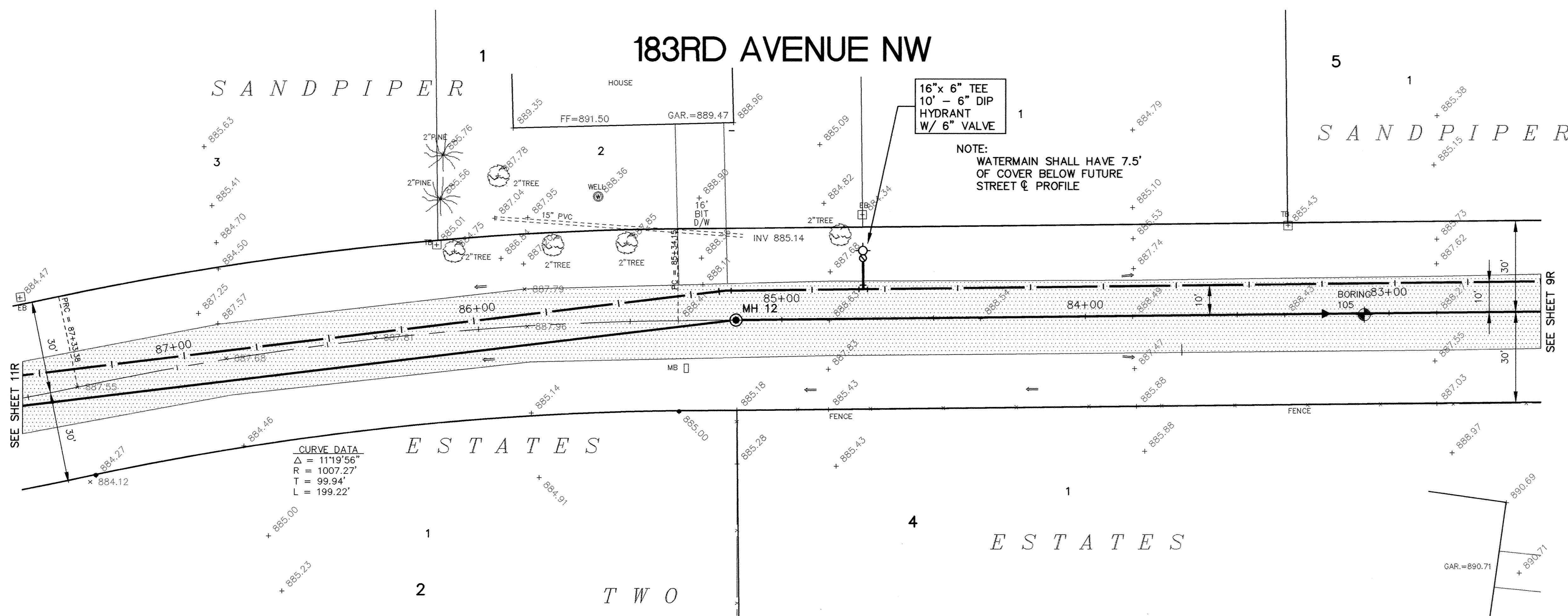
ESTATES

TWO

16" x 6" TEE  
10' - 6" DIP  
HYDRANT  
W/ 6" VALVE

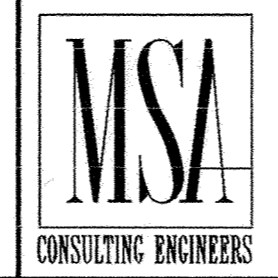
NOTE:  
WATERMAIN SHALL HAVE 7.5'  
OF COVER BELOW FUTURE  
STREET & PROFILE

CURVE DATA  
Δ = 11°19'56"  
R = 1007.27'  
T = 99.94'  
L = 199.22'



RECORD PLAN  
JANUARY 1996

I HEREBY CERTIFY THAT THIS PLAN, SPECIFICATION,  
OR REPORT WAS PREPARED BY ME OR UNDER MY DIRECT  
SUPERVISION AND THAT I AM A DULY REGISTERED  
PROFESSIONAL ENGINEER UNDER THE LAWS OF THE  
STATE OF MINNESOTA.  
*Mark V. Graham*  
DATE 9/21/94 REG. NO. 19130



1326 ENERGY PARK DRIVE  
ST. PAUL, MINNESOTA 55108  
(612) 644-4389  
9800 SHELARD PARKWAY  
MINNEAPOLIS, MINNESOTA 55441  
(612) 546-0432

DATE	DESCRIPTION
9-15-94	CHANGE ORDER NO. 1

DESIGNED	MJG
CHECKED	
DRAWN	LCS
GRAPHIC SCALE	0 20
VERT.	0 5

CITY OF ELK RIVER  
SANITARY SEWER, WATERMAIN, STREET  
183RD AVENUE NW  
83+00 TO 87+00  
DATE AUGUST 1994 SHEET 10R OF 63 SHEETS PROJECT NO. 230-223