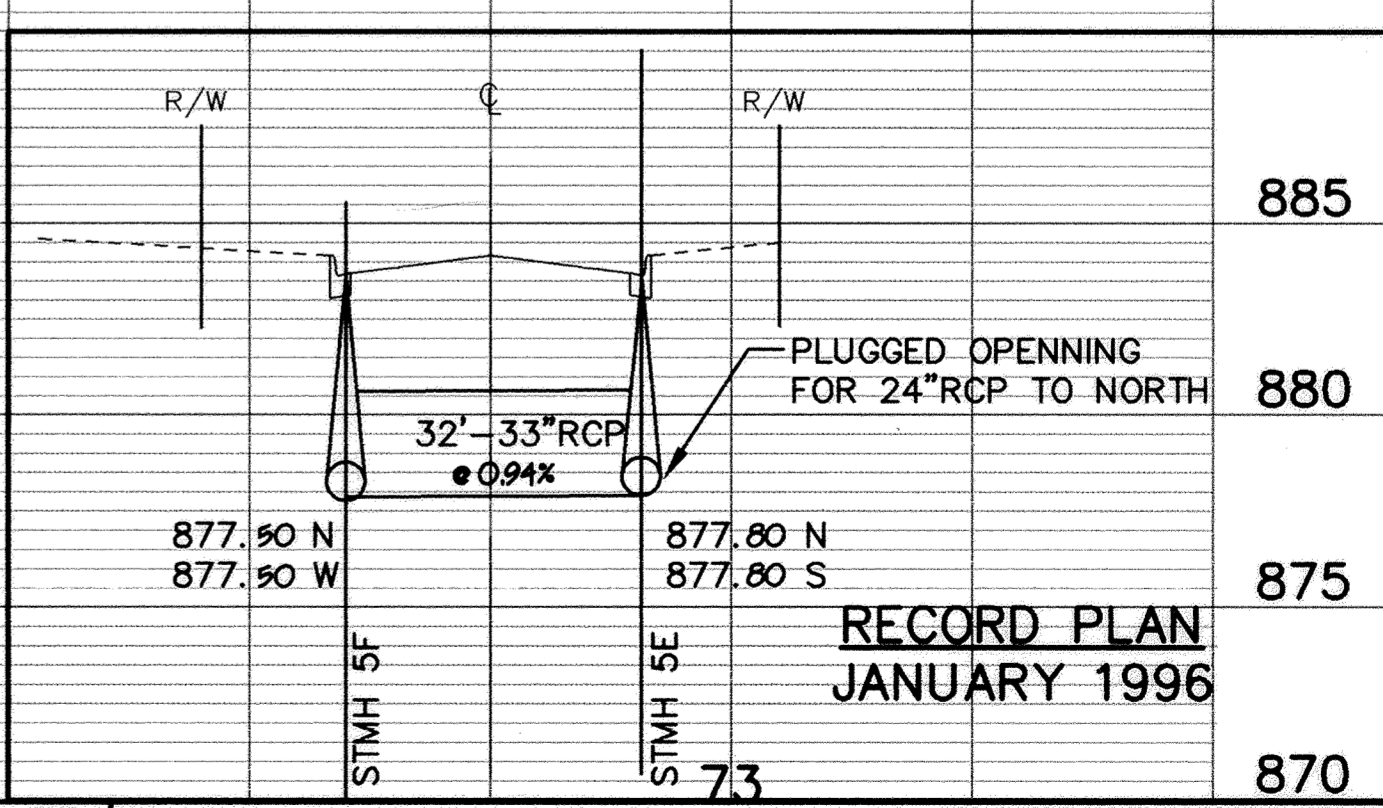
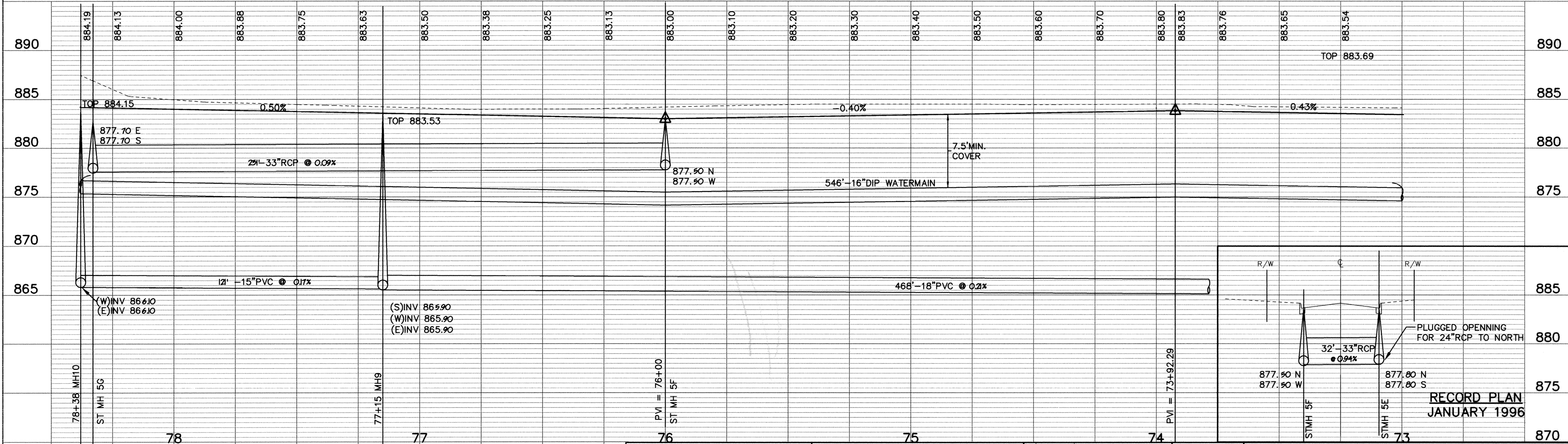
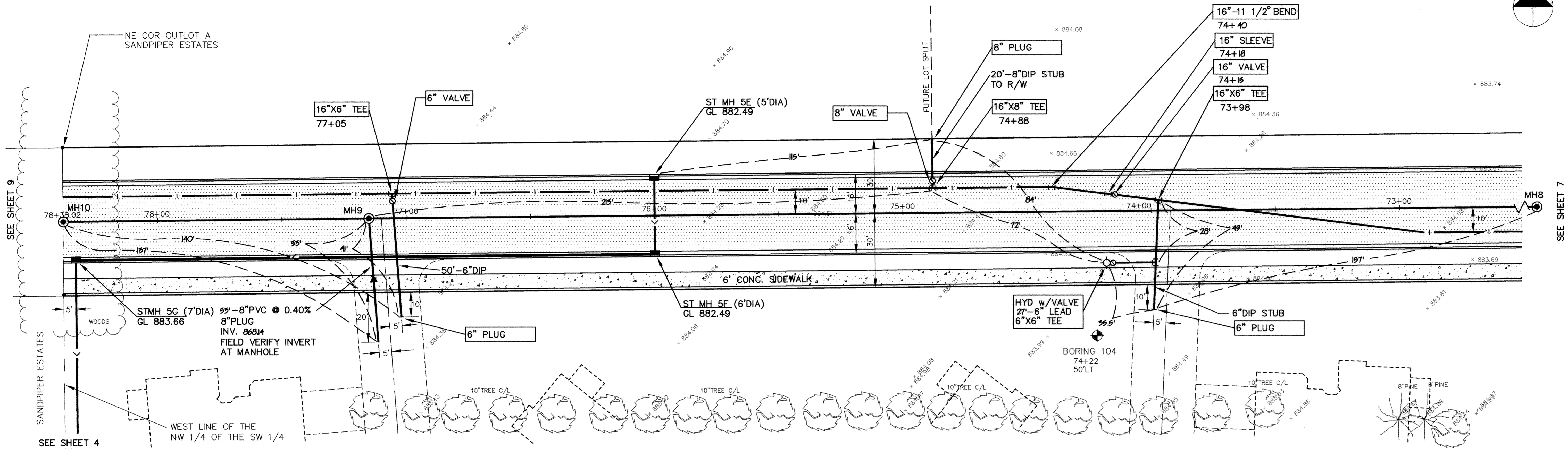
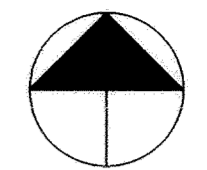


# 183RD AVENUE



**RECORD PLAN**  
JANUARY 1996

890	884.19	884.13	884.00	883.88	883.75	883.63	883.50	883.38	883.25	883.13	883.00	883.10	883.20	883.30	883.40	883.50	883.60	883.70	883.80	883.83	883.76	883.65	883.54	890
885	TOP 884.15																							885
880	0.50%																							880
875	21'-33\"/>																							
870	7.5\"/>																							
865	12'-15\"/>																							

I HEREBY CERTIFY THAT THIS PLAN, SPECIFICATION, OR REPORT WAS PREPARED BY ME OR UNDER MY DIRECT SUPERVISION AND THAT I AM A DULY REGISTERED PROFESSIONAL ENGINEER UNDER THE LAWS OF THE STATE OF MINNESOTA.

*Mark V. Graham*  
DATE 9/21/94 REG. NO. 19130



1326 ENERGY PARK DRIVE  
ST. PAUL, MINNESOTA 55108  
(612) 644-4389

5075 WAYZATA BLVD. SUITE #225  
MINNEAPOLIS, MINNESOTA 55416  
(612) 546-0432

DATE	DESCRIPTION
4-3-95	CHANGE ORDER NO. 2

DESIGNED LCS  
CHECKED  
DRAWN LCS  
GRAPHIC SCALE  
0 20  
0 5  
VERT.

CITY OF ELK RIVER  
SANITARY SEWER, STORM SEWER AND WATERMAIN AND STREET  
183RD AVENUE  
73+00 TO 78+38

DATE AUG 1994 SHEET 8 OF 63 SHEETS PROJECT NO. 230-223

DRAWING NUMBER WESTE2.94 8