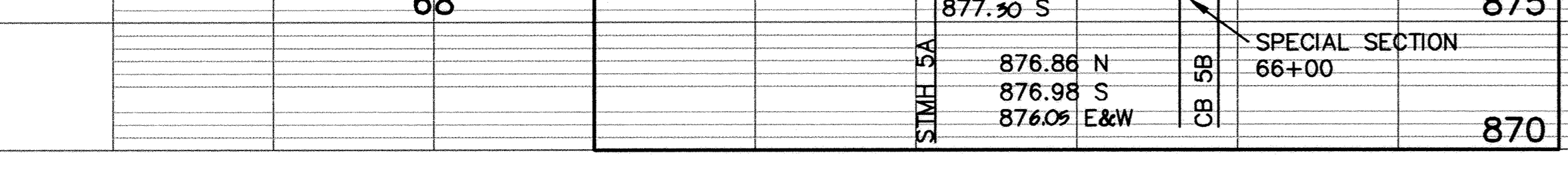
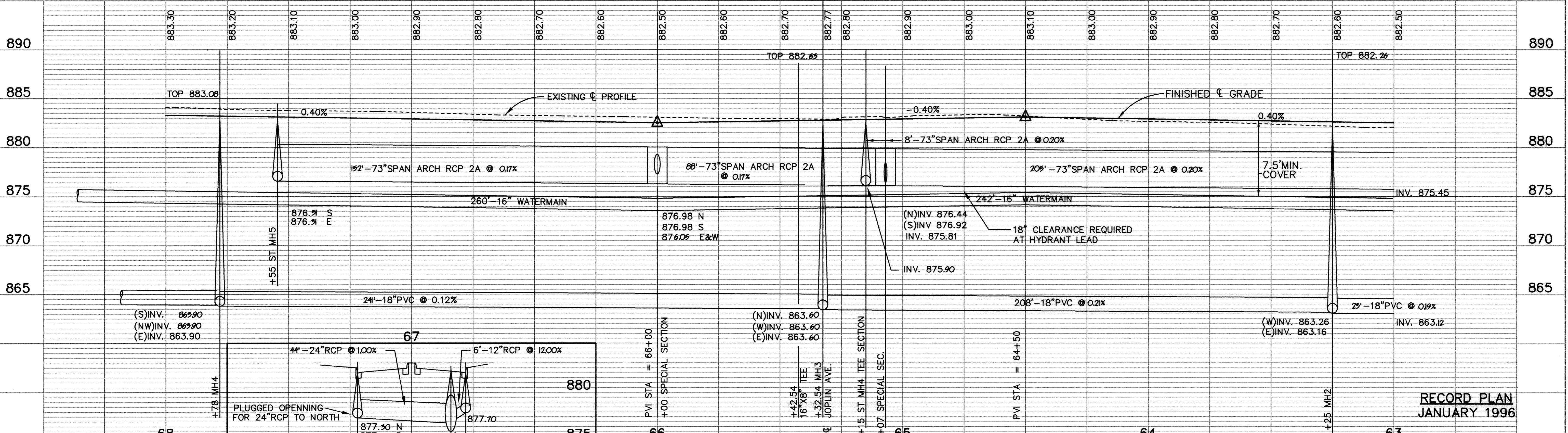
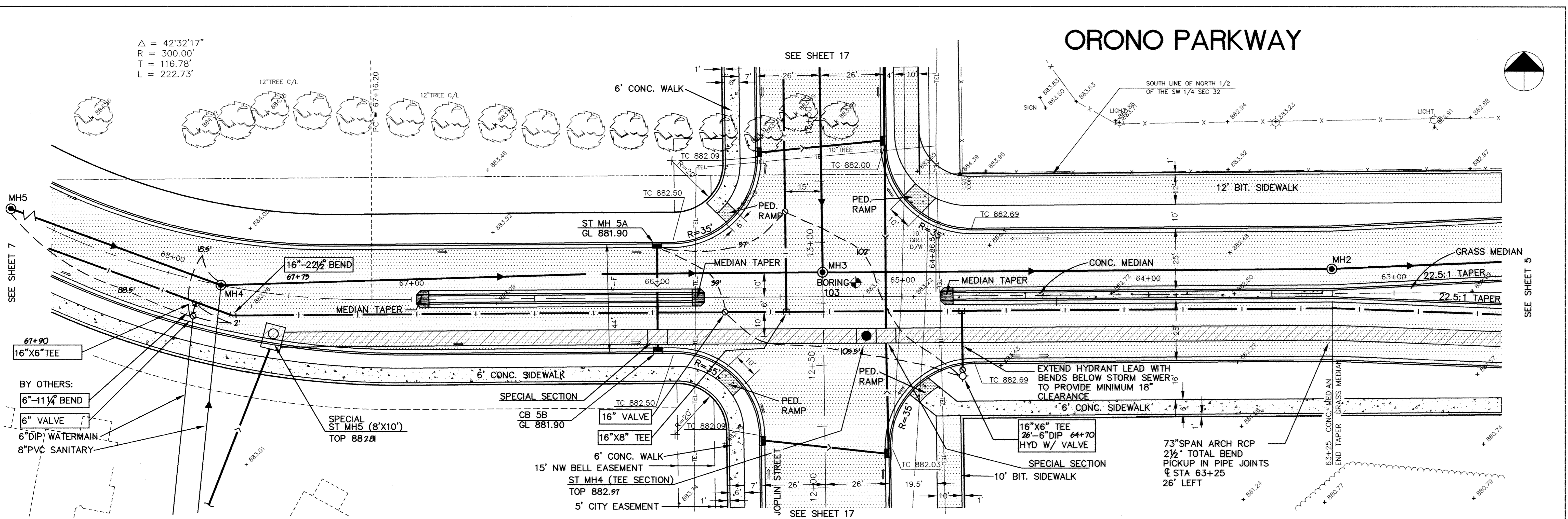


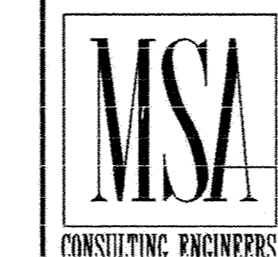
ORONO PARKWAY

Δ = 42°32'17"
R = 300.00'
T = 116.78'
L = 222.73'



I HEREBY CERTIFY THAT THIS PLAN, SPECIFICATION, OR REPORT WAS PREPARED BY ME OR UNDER MY DIRECT SUPERVISION AND THAT I AM A DULY REGISTERED PROFESSIONAL ENGINEER UNDER THE LAWS OF THE STATE OF MINNESOTA.

Mark V. Lushard
DATE 9/21/94 REG. NO. 19130



1326 ENERGY PARK DRIVE
ST. PAUL, MINNESOTA 55108
(612) 644-4389

9800 SHELARD PARKWAY
MINNEAPOLIS, MINNESOTA 55441
(612) 546-0432

DESIGNED LCS
CHECKED
DRAWN LCS

GRAPHIC SCALE
0 20
0 VERT. 5

CITY OF ELK RIVER
SANITARY SEWER, STORM SEWER, WATERMAIN AND STREET
ORONO PARKWAY

DATE AUG 1994 SHEET 6 OF 63 SHEETS PROJECT NO. 230-223