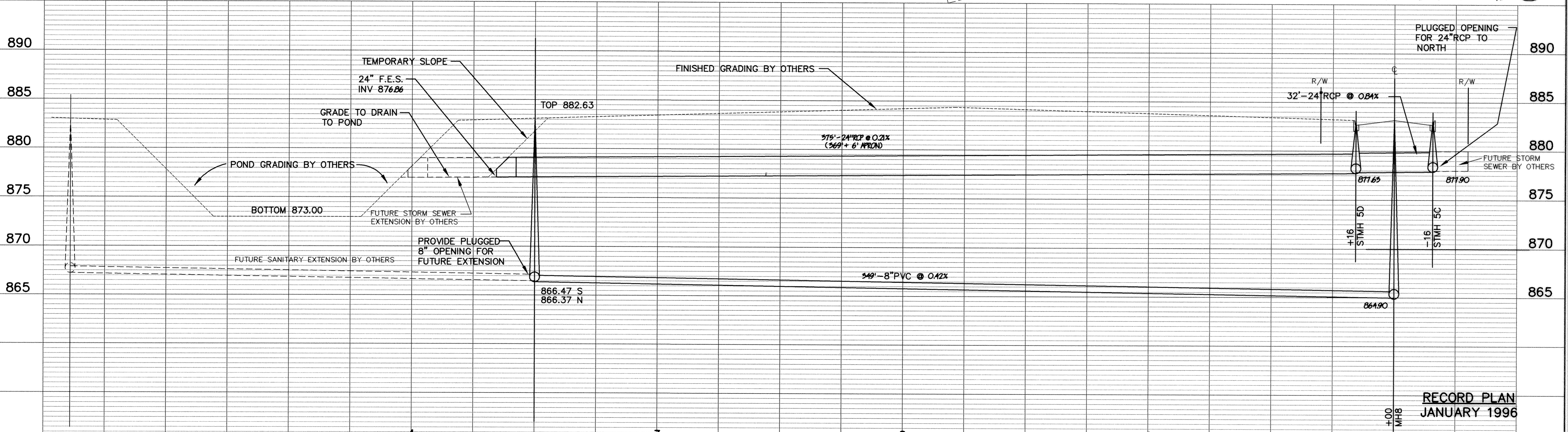
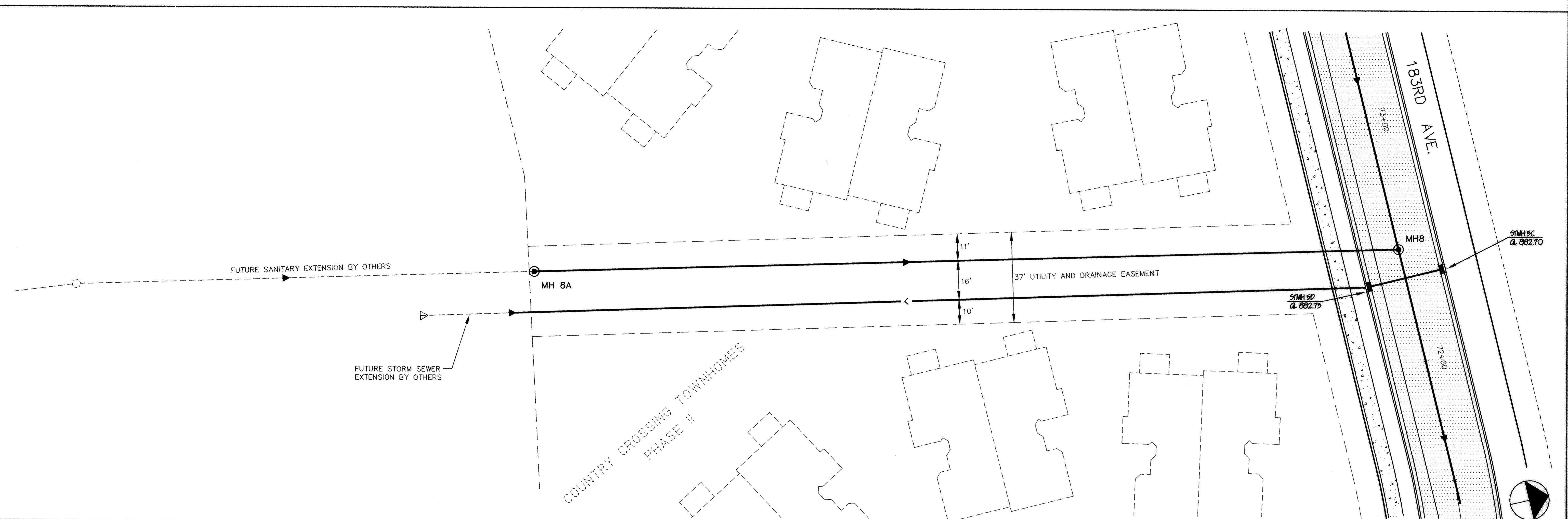


STOOD PRODUCTS • NEW HAVEN, MINNESOTA  
DESIGNED BY PART NUMBER 6522  
DRAWN BY PART NUMBER 6522  
CHECKED BY PART NUMBER 6522  
DATE APRIL 1995



RECORD PLAN  
JANUARY 1996

I HEREBY CERTIFY THAT THIS PLAN, SPECIFICATION, OR REPORT WAS PREPARED BY ME OR UNDER MY DIRECT SUPERVISION AND THAT I AM A DULY REGISTERED PROFESSIONAL ENGINEER UNDER THE LAWS OF THE STATE OF MINNESOTA.

*[Signature]*  
DATE 4/18/95 REG. NO. 23170



1326 ENERGY PARK DRIVE  
ST. PAUL, MINNESOTA 55108  
(612) 644-4389

5075 WAYZATA BLVD. SUITE #225  
MINNEAPOLIS, MINNESOTA 55416  
(612) 546-0432

DATE	DESCRIPTION

DESIGNED \_\_\_\_\_  
CHECKED \_\_\_\_\_  
DRAWN \_\_\_\_\_

GRAPHIC SCALE  
0 20  
0 5  
VERT. 5

CITY OF ELK RIVER  
WESTERN AREA PHASE II  
STORM AND SANITARY SEWER 183RD AVE.  
FROM 72+50 SOUTH TO POND

CHANGE ORDER NO. 2

DATE APRIL 1995 SHEET 5 OF 7 SHEETS PROJECT NO. 230-259