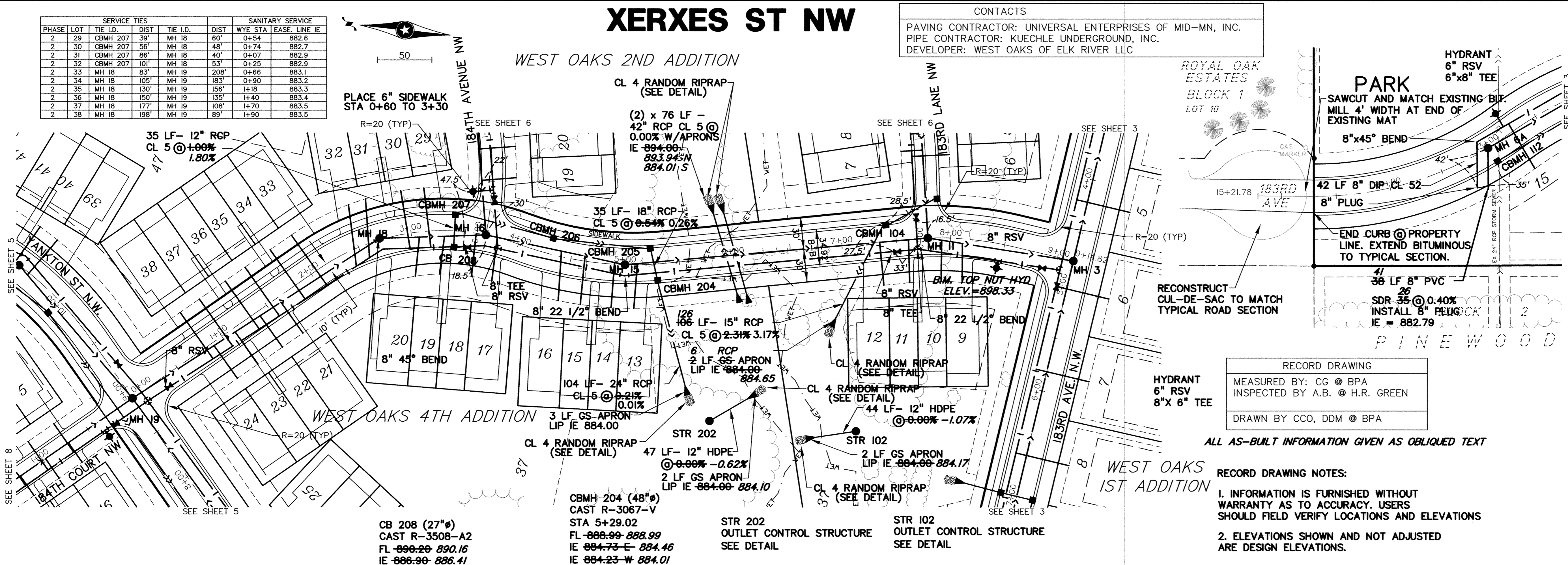


SERVICE TIES				SANITARY SERVICE			
PHASE	LOT	TIE I.D.	DIST	TIE I.D.	DIST	WYE STA	EASE, LINE IE
2	29	CBMH 207	39'	MH 18	60'	0+54	882.6
2	30	CBMH 207	56'	MH 18	48'	0+74	882.7
2	31	CBMH 207	86'	MH 18	40'	0+07	882.9
2	32	CBMH 207	101'	MH 18	53'	0+25	882.9
2	33	MH 18	83'	MH 19	208'	0+66	883.1
2	34	MH 18	105'	MH 19	183'	0+90	883.2
2	35	MH 18	130'	MH 19	156'	1+18	883.3
2	36	MH 18	150'	MH 19	135'	1+40	883.4
2	37	MH 18	177'	MH 19	108'	1+70	883.5
2	38	MH 18	198'	MH 19	89'	1+90	883.5

XERXES ST NW

CONTACTS
 PAVING CONTRACTOR: UNIVERSAL ENTERPRISES OF MID-MN, INC.
 PIPE CONTRACTOR: KUECHLE UNDERGROUND, INC.
 DEVELOPER: WEST OAKS OF ELK RIVER LLC



RECORD DRAWING
 MEASURED BY: CG @ BPA
 INSPECTED BY: A.B. @ H.R. GREEN
 DRAWN BY: CCO, DDM @ BPA

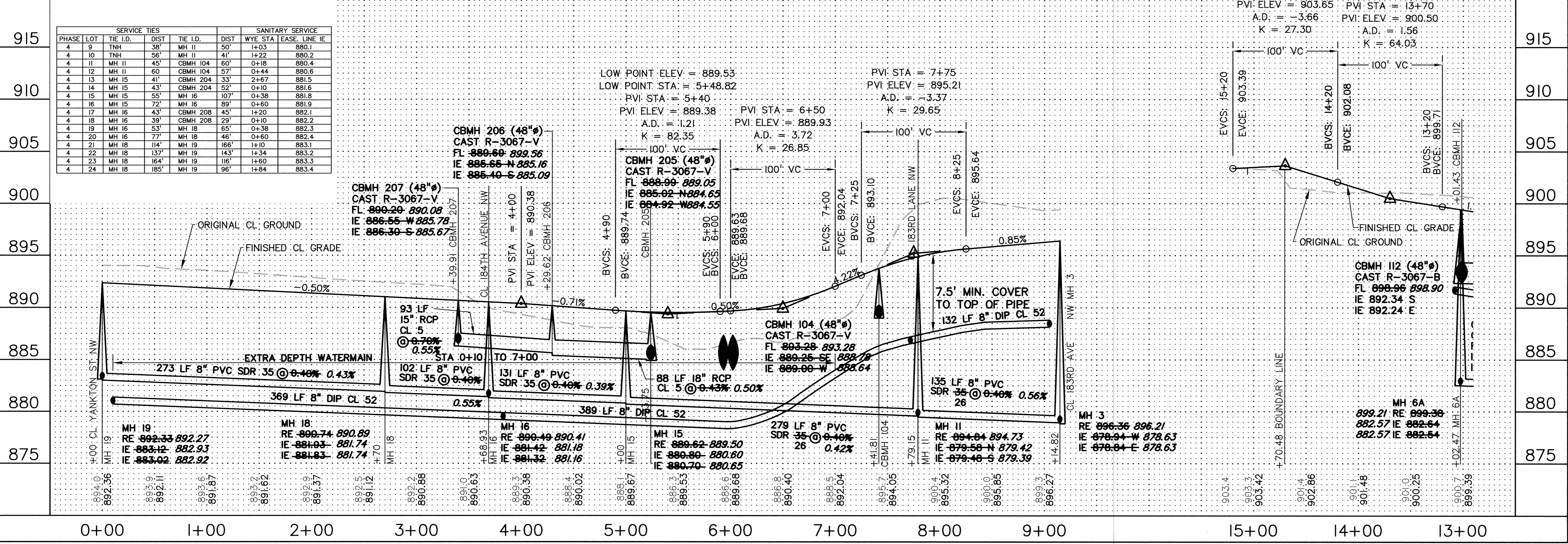
- RECORD DRAWING NOTES:
1. INFORMATION IS FURNISHED WITHOUT WARRANTY AS TO ACCURACY. USERS SHOULD FIELD VERIFY LOCATIONS AND ELEVATIONS
 2. ELEVATIONS SHOWN AND NOT ADJUSTED ARE DESIGN ELEVATIONS.

REV. NO.	DATE	DESCRIPTION
1	08/12/03	Revised Plan and Profiles
2	09/30/03	Revisions per City Engineer, profile and
3	10/07/03	Changed Dip to HDPE at Street C
4	10/15/03	Gate valve extension note
5	07/15/04	Record Hydrant Locations
6	04/04/05	Record Drawings
7	05/06/05	Record Drawings per city comment

DATE: 7/28/03
 DESIGN BY: CCO/BPA
 DRAWN BY: P.C./CCO
 CHECKED BY: CCO/JKB
 DWG FILE: 4_PP_XERXE
 FILE NO.: 100124-01

I hereby certify that this plan was prepared by me or under my direct supervision and that I am a duly Licensed Professional Engineer under the laws of the State of Minnesota.
 Signed: Christopher Otterness
 Date: 6-8-05 Reg. No. 41961

DRAWING NUMBER
WESTO 03
4



WEST OAKS
 CITY OF ELK RIVER, MN
 WEST OAKS OF ELK RIVER, LLC
 SANITARY SEWER, WATERMAIN,
 STORM SEWER & STREET PLAN
 XERXES ST NW

SHEET NO.
4

13

DRAWING NUMBER
WESTO 03
4