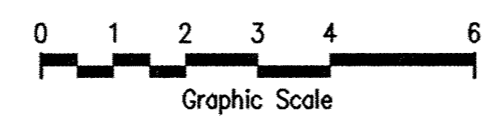
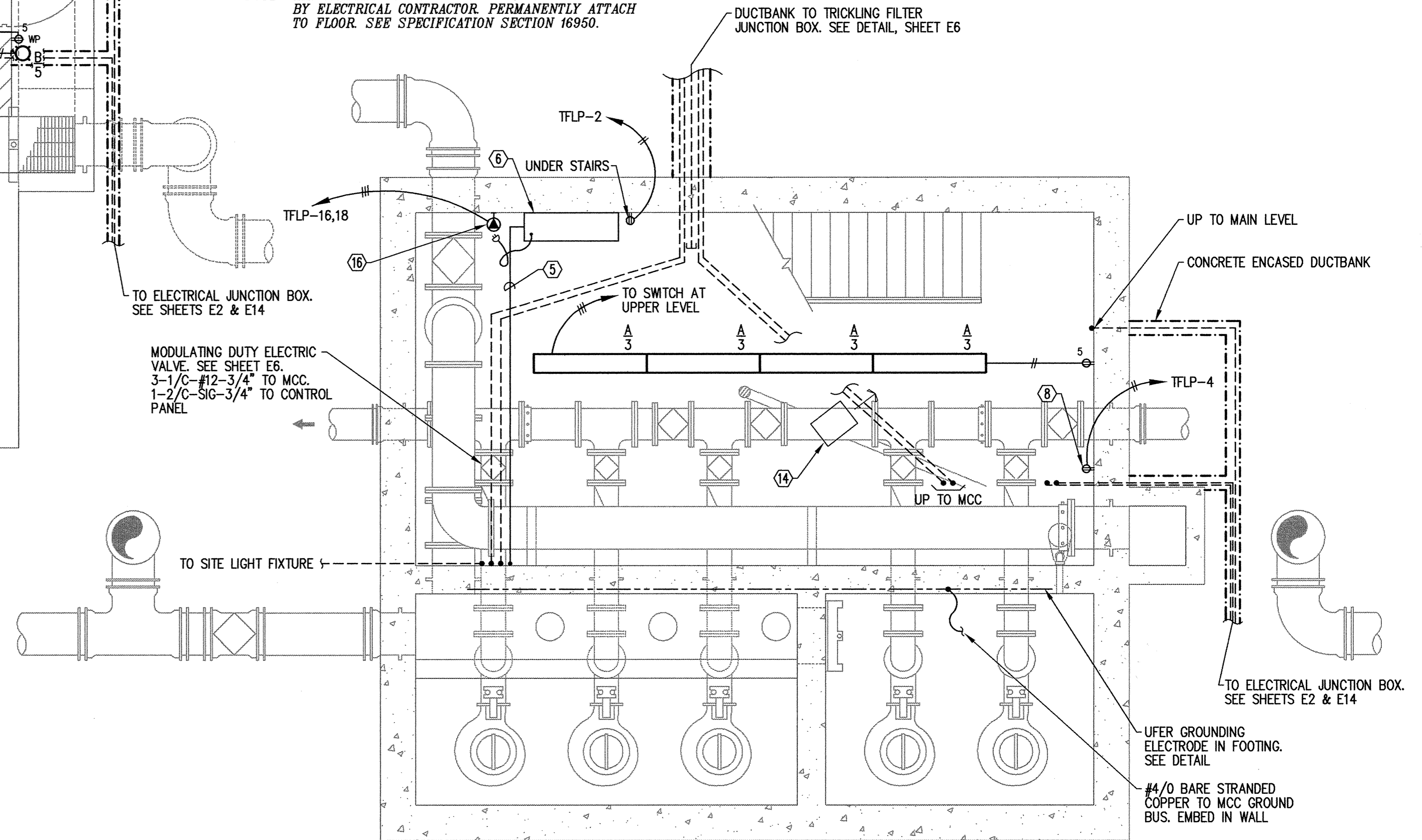


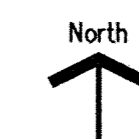
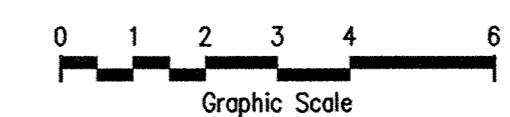
**TRICKLING FILTER PUMP STATION ELECTRICAL PLAN**  
SCALE: 3/8" = 1'-0"  
MAIN LEVEL



NOTE: AIR COMPRESSOR IS TO BE FURNISHED & INSTALLED BY ELECTRICAL CONTRACTOR PERMANENTLY ATTACH TO FLOOR. SEE SPECIFICATION SECTION 16950.



**TRICKLING FILTER PUMP STATION ELECTRICAL PLAN**  
SCALE: 3/8" = 1'-0"  
LOWER LEVEL



**NUMBERED NOTES**

- ① TRICKLING FILTER PUMP STATION EXHAUST FAN. 3/4hp, 480 VOLT, 3Ø W/ 120VAC MOTORIZED DAMPER. SEE MCC ONE-LINE DIAGRAM & SCHEMATIC
- ② INTAKE AIR DUCTING W/ 120VAC MOTORIZED DAMPER. CONFIRM EXACT LOCATION OF DAMPER. SEE MCC TRICKLING FILTER PUMP STATION EXHAUST FAN ONE-LINE DIAGRAM & SCHEMATIC
- ③ TRICKLING FILTER PUMP STATION EXHAUST FAN THERMOSTAT. SEE MCC ONE-LINE DIAGRAM & SCHEMATIC
- ④ TRICKLING FILTER PUMP STATION 480:120/208 VOLT TRANSFORMER & PANEL TFLP. SEE MCC ONE-LINE DIAGRAM & PANELBOARD SCHEDULE. GROUND PANEL TFLP PER 1990 NEC ARTICLE 250
- ⑤ 3/8" NYLON AIR LINE IN 3/4" CONDUIT TO CONTROL PANEL.
- ⑥ AIR COMPRESSOR UNDER STAIR. COORDINATE EXACT LOCATION. SEE SHEET E2.
- ⑦ 3/8" AIR LINE IN 3/4" CONDUIT FROM CONTROL PANEL TO TRICKLING FILTER WETWELL.
- ⑧ SUMP PUMP OUTLET. COORDINATE EXACT LOCATION.
- ⑨ 2-1/C-#12-1/2" FROM CONTROL PANEL TO TFLP-1.
- ⑩ TRICKLING FILTER PUMP STATION JUNCTION BOX. SEE DETAIL, SHEET E6.
- ⑪ TRICKLING FILTER PUMP STATION CONTROL JUNCTION BOX. SEE DETAIL, SHEET E6.
- ⑫ 2" GALVANIZED RIGID STEEL CONDUIT FROM DUCTBANK. STUB UP 12" ABOVE FLOOR AT THIS POINT.
- ⑬ HEAT THERMOSTAT. 2-1/C-#14-1/2" TO UNIT HEATER AT LOWER LEVEL.
- ⑭ GAS UNIT HEATER. 2-1/C-#12-1/2" TO TFLP-7. 2-1/C-#14-1/2" TO THERMOSTAT AT UPPER LEVEL.
- ⑮ CONTROL CONDUIT. SEE CONTROL PANEL & MCC ONE-LINE DIAGRAM.
- ⑯ L6-2ØR. INSTALL MATCHING PLUG ON COMPRESSOR. 3-1/C-#12-1/2" TO TFLP.

This drawing was prepared by:  
**Kaeding & Associates, Inc.**  
7300 France Avenue South  
Suite 330  
Minneapolis, MN 55435  
Telephone: (612) 831-0317  
Fax: (612) 831-2179

I HEREBY CERTIFY THAT THIS PLAN, SPECIFICATION, OR REPORT WAS PREPARED BY ME OR UNDER MY DIRECT SUPERVISION AND THAT I AM A DULY LICENSED PROFESSIONAL ENGINEER UNDER THE LAWS OF THE STATE OF MINNESOTA.  
*[Signature]*  
DATE: 11/1/93 REG. NO. 9955



1326 ENERGY PARK DRIVE  
ST. PAUL, MINNESOTA 55108  
(612) 644-4389  
  
9800 SHELARD PARKWAY  
MINNEAPOLIS, MINNESOTA 55441  
(612) 546-0432

DATE	DESCRIPTION	DESIGNED PFK
		CHECKED PFK
		DRAWN DTB
		GRAPHIC SCALE
		0 HORIZ.
		0 VERT.

**CITY OF ELK RIVER**  
WASTEWATER TREATMENT FACILITIES  
TRICKLING FILTER PUMP STATION ELECTRICAL PLANS

**E5**

DATE DEC 1993 SHEET     OF     SHEETS PROJECT NO. 230-151