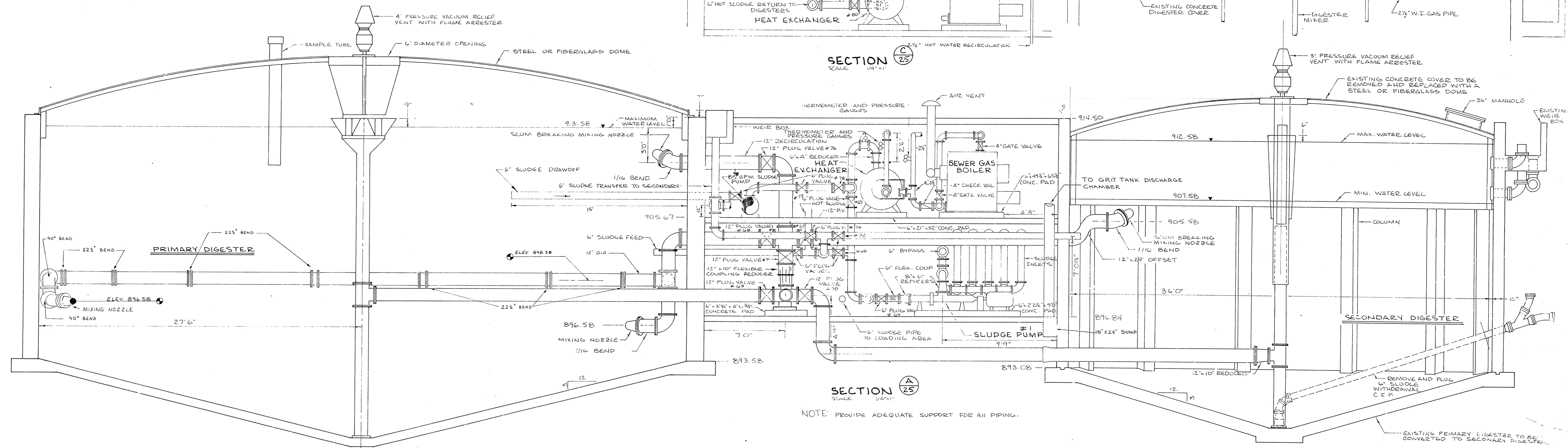
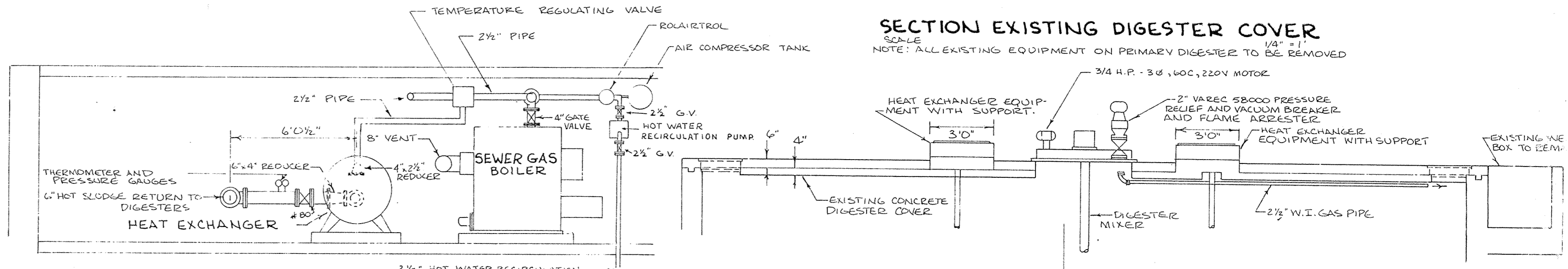
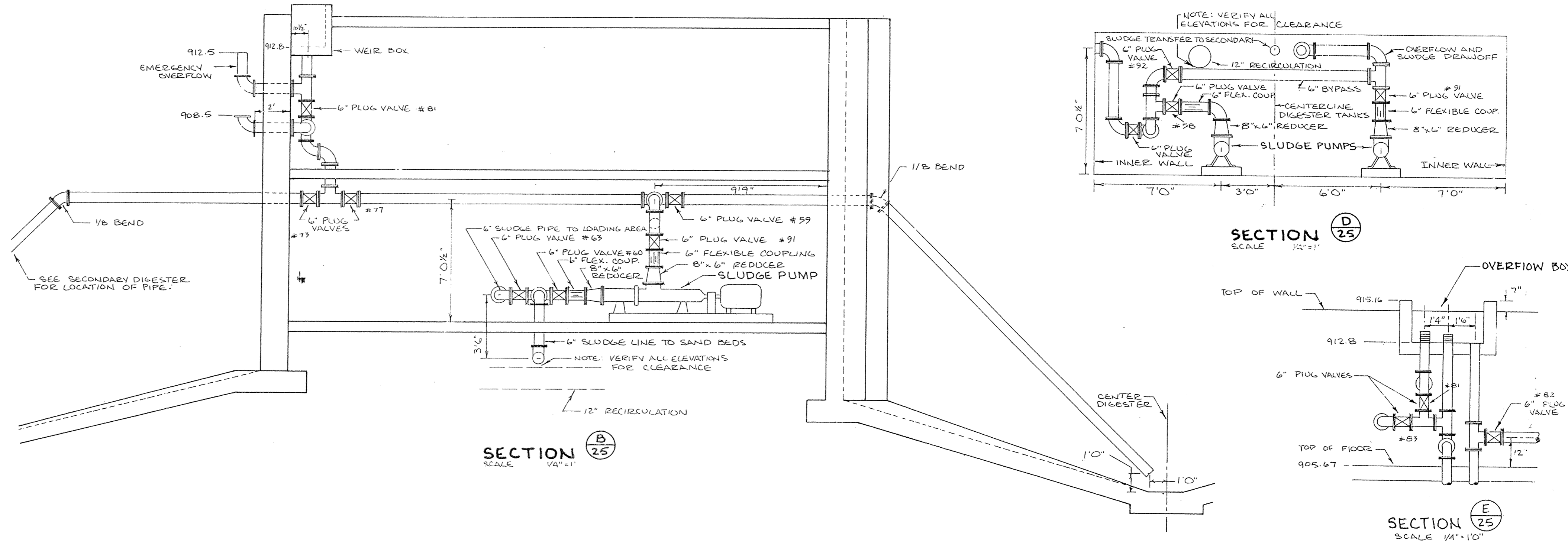


GAS PIPING SCHEMATIC
SCALE: 1/4" = 1'

1. SEDIMENT AND DRIP TRAP ASSEMBLY
2. GAS METER
3. DRAIN TRAP
4. FLAME TRAP ASSEMBLY
5. PRESSURE RELIEF AND FLAME TRAP ASSEMBLY (SEPARABLE)
6. WASTE GAS BURNER
7. HOT WATER BOILER
8. TRIPPLE MANOMETER
9. DIAL PRESSURE GAUGES



NOTE: PROVIDE ADEQUATE SUPPORT FOR ALL PIPING.

NO.	DATE	BY	REMARKS
1	3/10/77	PWP	MISC. REVISIONS - ADD E AND F
2	2-23-75	D.J.S.	ADDED FIBERGLASS DOME NOTE & SIZE OF SEWAGE GAS PIPING IN SCHEMATIC

DESIGNED K.L.V.	CHECKED K.L.V.
DRAWN P.W.P.	APPROVED W.H.M.
DATE 8/26/75	COMM.

I HEREBY CERTIFY THAT THIS PLAN WAS PREPARED BY ME OR UNDER MY DIRECT SUPERVISION AND THAT I AM A DULY REGISTERED PROFESSIONAL ENGINEER UNDER THE LAWS OF THE STATE OF MINNESOTA.

Harold L. Van Cacklen
DATE **Aug 29, 1975** REG. NO. **10159**

McCOMBS-KNUTSON ASSOCIATES, INC.
CONSULTING ENGINEERS ■ LAND SURVEYORS ■ SITE PLANNERS
MINNEAPOLIS, HUTCHINSON and MARSHALL, MINNESOTA

WASTE WATER TREATMENT FACILITIES
FOR
ELK RIVER, MINNESOTA

SCALE AS NOTED	BOOK	PAGE
FILE NO.	2603	

MECHANICAL SECTION
DIGESTER BUILDING